



Chamber Connections

Vol. 45 // No. 7

cdcc.net

JULY 2022



CORNERSTONE MEMBER
R&R Commercial Realty, Inc.

PAGE 3



CORNERSTONE MEMBER
Chesapeake Utilities on sustainable energy

PAGE 3

IN THIS ISSUE...

LCD Class of 2022 Graduation

PAGE 8

Kent Economic Partnership Rockport Study 2.0

PAGE 9

Downtown Dover Master Plan Update

PAGE 10

CDCC Awards the Excellence of Kent County!

It is incredibly easy to focus on the work that has not been done, the situations that didn't work out and all the work there is still yet to do. While this mindset can reveal where change is needed, it can also rob people of the present moment and their appreciation of the amazing progress already made. The Central Delaware Chamber of Commerce (CDCC) believes there is always room to grow and excel — however, the CDCC believes that it is equally important to stop, reflect and recognize the outstanding achievements of the hard-working business professionals that help make Central Delaware the gem that it is. The CDCC is proud to orchestrate the Annual Awards for Excellence Celebration to accomplish this goal.

The CDCC invited members, extended community, co-workers, family and friends to an evening of celebrat-

ing the excellent accomplishments of Central Delaware's business community on June 23, 2022, at Pizzadili Vineyard & Winery. Guests witnessed the awarding of Small Business of the Year, Large Employer of the Year, Young Professional of the Year and additional partnership awards. Guests cheered on their peers, met new people and reveled in the awesome work happening right here in their community.

Attendees mixed, mingled, ate and drank amongst the Leadership Central Delaware Class of 2022, who ceremoniously graduated from the Diamond Program of the Chamber. LCD is a unique and immersive 10-month program that challenges the classmates' team building, decision-making and goal setting skills, all while learning and touring various industries in Kent County. This evening marked a bitter-sweet moment as this year's program

ended for our graduates; however, it is only the beginning of their leadership journey.

The 2022 Annual Awards for Excellence Celebration serves as a wrap-up to the CDCC's fiscal year, and what better way than to reflect and celebrate with the people who help make our work such a success — the Central Delaware community! From sponsors, volunteers, business partners, to ambassadors, the CDCC could not have completed a busy year without each and everyone's help. This celebration was for YOU!

The CDCC would like to give a special thank you to our Signature Patron Sponsor (Merrill Lynch — Connell, Carey & Associates) for their generous support in making this year's event a success! Thank you to Highmark Blue Cross Blue Shield of Delaware and JLI

Continued on Page 7

Cohabiting at Habitat for Humanity!

The Central Delaware Chamber of Commerce (CDCC) invites its members to join us for our July monthly Sunset Business Mixer on Wednesday, July 27, at Central Delaware Habitat for Humanity ReStore Center (2311 S. DuPont Hwy Dover, Del.) from 5 to 7 p.m. Mark your calendars and register now to attend! To register, please visit the CDCC website at www.cdcc.net or call CDCC at (302) 734-7513. It's an evening of networking, rela-

tionship-building and small business support with your local community!

The Sunset Business Mixer is the premiere networking event of the Chamber. The CDCC is proud to host this monthly event for members and their friends to provide a place for valuable networking opportunities, friendship, and a chance to support local businesses. These are great opportunities to experience local businesses you

may have never visited.

Attend the Sunset Business mixer at Central Delaware Habitat for Human-



Continued on Page 10

cdcc.net

Dina's Digest



PRESIDENT
DINA VENDETTI

Cheers – to a New Year!

According to the CDCC calendar, it is time once again to wish all of you a very Happy and Prosperous New Year! While our calendars are not turning from December to January, July 1st marks the beginning of our fiscal year and the beginning of a brand-new Chamber year of working diligently to serve as THE essential resource for the development of businesses in Central Delaware. Happy New Year!

As the 2021-22 year wrapped up, we spent some time looking back. While, for part of the year, we continued to experience the ripple effect of the pandemic, we are able to point to many moments of accomplishment and success as YOUR Chamber stayed the course and kept on working. Of course, we can't list them all in this limited space, but here are a few examples of what marked our year.

In early November, we learned that Central Delaware had AGAIN won the coveted Abilene Award. This prestigious recognition is given annually to a civilian community for outstanding support to a nearby Air Mobility Command base. This award emphasizes the strong partnership we enjoy with Dover Air Force Base. And here's the microphone drop on this one ... This marks the fourth time that the Abilene Trophy has come home to Central Delaware ... and we won it DURING A PANDEMIC! As always, YOUR CDCC is proud to stand shoulder to shoulder with the military personnel of DAFB as part of TEAM Dover!

Another pinnacle was the work YOUR Chamber was able to do through the grant program. The CDCC, joined by the Kent County Tourism Corporation, submitted a proposal to Kent County Levy Court to create an ARPA-funded grant program – and the commissioners of Kent County Levy Court enthusiastically approved it. The

program, which opened Jan. 3, has provided much-needed funds to small businesses, hoteliers and banquet facilities here in our area. For many, this has made a significant impact and has ensured their continued operation. This kind of real-time help is a remarkable specialty of the CDCC!

Finally, YOUR Chamber navigated its way through a change in leadership as our long-time president, Judy Diogo, ended her 17-year tenure at the helm and moved into retirement. There are not enough words to describe the remarkable leadership that we enjoyed during Judy's time as president. We are very blessed that Judy has agreed to continue to share her knowledge and experience with us as she officially takes on the role of "consultant." And after a careful search, our board saw fit to promote yours truly from the Office of Marketing & Communications to the office of President, where I am working hard to learn all the ins and outs of being on this side of the desk! Thank you for being so gracious as I figure it all out.

As we embark on a new year, it is important to anticipate what 2022-23 will bring. We have many ideas in mind for new programs and initiatives, all designed to assist our business members as they work hard to grow, expand, and succeed! We are incredibly excited for what is to come in this new chapter – and more than that, we are excited to be embarking on it with each of you! Stay tuned in to our emails and all our publications for all the latest on what this year will bring.

For more information about YOUR Chamber, its activities, and programs, please give us a call at the CDCC Office (302) 734-7513 or visit our website at www.cdcc.net. Thank you for an amazing year, and for your partnership as we walk together into the future! Cheers – to a new year!

Calendar of Events

JULY

- Monday, July 4**
Independence Day
Office Closed
- Tuesday, July 12**
CDCC Board Meeting
7:30 – 8:30 a.m.
Faw Casson
- Tuesday, July 12**
Young Professionals Social
Noon – 1 p.m.
FCCB – Dover
- Wednesday, July 13**
Marketing Committee Meeting
10 – 11 a.m.
CDCC Conference Room
- Thursday, July 14**
Member Orientation
Noon – 1:30 p.m.
via Zoom
- Friday, July 15**
Member Orientation
8:30 – 10 a.m.
via Zoom
- Tuesday, July 19**
LCD Steering Committee Meeting
12:30 – 1:30 p.m.
CDCC Conference Room
- Wednesday, July 27**
Ambassador Committee Meeting
4:30 p.m.
Central Delaware Habitat for Humanity ReStore
- Wednesday, July 27**
Sunset Business Mixer
5 – 7 p.m.
Central Delaware Habitat for Humanity ReStore

AUGUST

- Thursday, Aug. 4**
Kent County Open for Business
8:30 – 10 a.m.
Kent County Levy Court
- Monday, Aug. 29**
CDCC Executive Committee Meeting
8 – 10 a.m.
CDCC Conference Room
- Tuesday, Aug.**
CDCC Board Meeting
7:30 a.m. – 8:30 a.m.
Faw Casson
- Wednesday, Aug. 31**
Ambassador Committee Meeting
3:30 p.m.
TBA
- Wednesday, Aug. 10**
Marketing Committee Meeting
10 – 11 a.m.,
CDCC Conference Room
- Wednesday, Aug. 31**
Sunset Business Mixer / Member 2 Member Expo
4 – 7 p.m.
TBA
- Thursday, Aug. 11**
Member Orientation
8:30 – 10 a.m.
via Zoom
- Tuesday, Aug. 16**
LCD Steering Committee Meeting
12:30 – 1:30 p.m.
CDCC Conference Room

Published monthly by the Central Delaware Chamber of Commerce, the first accredited Chamber of Commerce in Delaware. We represent the interests of the small business community. Over 800 businesses support CDCC.

OFFICERS & BOARD OF DIRECTORS

- Executive Committee Chairperson** Brian J. Stetina, Faw Casson
- First Vice Chairperson** Dana F. Wattay, Wattay Accounting
- Vice Chair, Economic Development** Christina M. Lessard, Lessard Builders, Inc.
- Vice Chair, Organizational Development** Jesse C. Keleher, Harrington Raceway & Casino
- Vice Chair, Community Affairs** Dr. Cornelia Johnson, Delaware Technical Community College
- Vice Chair, Legislative Affairs** C. Scott Kidner, C.S. Kidner Associates/Capitol Strategies
- Vice Chair, Military Affairs** Evans Armantrading, Jr., CNU Fit, LLC
- Treasurer** Chaz M. Rzewnicki, Dover Federal Credit Union
- Vice Chair Smyrna/Clayton** Lincoln D. Willis, The Willis Group, LLC
- Past Chairperson** Shane E. Breakie, Chesapeake Utilities

(USPS 462-490)

Central Delaware Chamber of Commerce
435 N. DuPont Highway
Dover, Delaware 19901
302-734-7513

BOARD OF DIRECTORS

Kim I. Adams, Mountain Consulting, Inc.
H. Scott Connell, Merrill Lynch/Bank of America
Kevin Mills, Kraft Heinz
S. Ryan Halpern, Eye Specialists of DE
Timothy R. Horne, Dover International Speedway
Konrad LaPrade, Delaware State News
Richard A. Mohnk, Bayhealth Medical Center – Kent Campus
Nick Polcino, Bally's Dover Casino Resort
Javier Santana, High Ground Creative, LLC
Charmaine A. Whyte, Delaware State University

POSTMASTER:
Send address changes to Chamber News,
435 N. DuPont Highway,
Dover, DE 19901

HONORARY BOARD MEMBERS AND GUESTS

Robin R. Christiansen, Mayor, City of Dover
Hon. Jeffrey W. Hall, Commissioner, Kent County Levy Court
Col. Matthew S. Husemann, Commander, 436th Airlift Wing

ADMINISTRATIVE STAFF

Dina C. Vendetti, President
Cristal R. Brennehan, Executive Assistant & Director of Special Events
Cindy A. Friese, Assistant for Special Events and Sponsorships
Cleo D. Bell, Marketing & Communications and LCD Coordinator
Elizabeth Walter, Administrative Assistant

CDCC CONSULTANT

Judy Diogo, Past President

Periodical Postage Paid at
Dover, DE 19901

MEMBER CHAMBER OF COMMERCE OF THE UNITED STATES.
CHAMBER CONNECTIONS PRODUCTION AND LAYOUT BY: DELAWARE STATE NEWS

Thank you to the CDCC Cornerstone Members!



An Industry Exclusive CDCC Marketing Package!



435 N. DuPont Highway,
Dover, DE 19901
P: 302.734.7513
E: info@cdcc.net
www.cdcc.net



The CDCC is THE essential resource for the development of businesses in Central Delaware.

Cornerstone Members

Chesapeake Utilities Corporation: committed to a sustainable energy future

Chesapeake Utilities Corporation recognizes the climate change implications of greenhouse gas emissions on the environment. The global transition to lower-carbon sources of energy provides our company with opportunities for growth, as well as an obligation to be part of the long-term sustainability solution. We are committed to doing our part and leading the way in the evolving energy transition, while creating sustainable value for our customers, investors and other stakeholders.

- We understand our responsibility to implement strategies that reduce our internal carbon footprint, even as we continue to meet growing customer demand.
- We appreciate that we are uniquely positioned to assist our customers in managing their carbon mitigation journey.

- As we hold ourselves accountable to support environmental sustainability, we apply the same standards to our suppliers and vendors.

Our challenge, as a company, an industry and a society, is to ensure that we work together to protect the planet for future generations.

Since 2009, we have invested approximately \$2 billion toward emissions reductions in our own operations and those of our customers. We continue to increase our operational efficiency, modernize our infrastructure and invest in advanced technologies that position us well for the future. Our collaboration with industry-leading organizations on the development and supply of lower-carbon energy sources (like renewable natural gas and hydrogen) provides additional energy resource options to our customers. Our energy delivery systems will transport

tomorrow's energy. All our operations have assessed opportunities to reduce emissions, and we are actively engaged in several projects that will continue to lower our internal carbon output. We are developing waste-to-production facilities that improve agricultural and landfill environmental conditions in our service areas and produce renewable natural gas (RNG).

It's important that the work we do contributes to a sustainable future for the communities we serve. We partner with our communities and local governments in support of programs and initiatives that promote the conservation and protection of our natural resources, and we assist customers and communities with solutions for more efficient energy use. We seek partnerships with organizations that work, for example, to conserve the places people and wildlife depend on, preserve land

and promote watershed stewardship.

Jeff Householder, president and CEO of Chesapeake Utilities Corporation shares this rationale: "We can do the right things for society and the environment while continuing to deliver results for our shareholders."

Our inaugural Sustainability Report, published in March 2022, is the next step in our commitment to environmental, social and governance responsibility. We deliver energy that makes life better for the people and communities we serve, and we will be a leader in delivering energy that contributes to a sustainable future. You can read more about our sustainable energy efforts online at chpk.com/sustainability-report.



Tommy's Express Brings Modern Look to Landmark Corner

Developer refurbishes/rebrands old Kirby & Holloway sign

Motorists on Dupont Highway in Dover may notice something oddly familiar about the Tommy's Express Car Wash sign that now stands at the LePore Drive intersection.

For decades, 656 N. Dupont Highway had been home to the landmark Kirby & Holloway Family Restaurant. Sadly, an accidental fire in 2014 wiped the diner out. The rest of the building was eventually demolished. Ever since, all that stood as a reminder of the bustling corner's heyday was the retro, lightbulb-laden

road sign.

Luckily, in recent years, a development group took an interest in the long-vacant corner and had a plan to bring commerce back to it.

"The site was an excellent location for one of our fully-automated, express car washes," said Dover's Tommy's Express Car Wash co-owner Bobby Randhawa. "For busy commuters heading north or south through Dover or in and out of town, it's a great place to turn in for a quick 3-minute wash."

As part of the developer's plan, they wanted to give a nod to what the corner once was. To that end, they spent \$173,000.00 to refurbish and rebrand the old sign. "We thought reusing the sign would be a good way to respect the history of the corner and what it might have meant to locals. We also included a large portrait of the old sign as it was for motorists to admire as they drive into the car wash," said co-owner Manpreet Mattu. "It's an investment in the community that we were proud to make."



The car wash held its grand opening to broad acclaim on April 29; a long line of vehicles quickly formed to take advantage of the free car washes on offer.

TOMMY'S EXPRESS

Continued from Page 3

Pledging to give \$1 to the Dover Police Athletic League and the Robbin Fire Company for every car washed during the opening weekend, Tommy's Express was able to give a \$1,400 donation across the two organizations. R&R Commercial Realty's Carl Kaplan, the agent who handled the sale, noted that despite the arduous entitlement and approvals process, the redevelopment of the corner bodes well for the area. "We had a lot of hoops to jump

through to get this done, but the developer was committed and put in the time and money to make it happen," said Kaplan. "In the end, when someone has both the vision and the dedication to turn a vacant, overgrown lot into an eye-catching, lively business – we all win. This was a great outcome for that little stretch of Dover." About R&R Commercial Realty: Established in 1996, R&R Commercial Realty is a highly successful real estate firm located in the center

of the Delmarva Peninsula. With

a focus on commercial real estate, R&R is one of the most visible and well-respected local firms. Services include commercial & industrial sales and leasing, land sales and development as well as property management. For additional information about R&R Commercial Realty and its extensive inventory of commercial property, visit randrcommercialrealty.com, call the office at (302) 674-3400 or email info@randrcommercialrealty.com.



LCD sees behind-the-scenes of Kent energy and waste treatment

The Leadership Central Delaware Class of 2022 finished their official class sessions with Energy & Environment Day in June. It was a full day of thought-provoking tours, presentations and demonstrations surrounding the topic of energy consumption, conservation and crossover.

This enlightening day began at St. Jones Reserve for a panel discussion from four knowledgeable individuals

in the industry. The class received insight from Dave Detrick of Chesapeake Utilities, Heather Contant of Delaware Municipal Electric Corporation, Lauren Irby of Delaware Electric Co-op and Ed Jackson of Affinity Energy Management. Each panelist presented their personal passions and responsibilities within the energy industry, as well as some key indicators on what the future of energy utility looks like for

the public.

Next, the LCD Class of 2022 boarded the bus to the Kent County Wastewater Treatment Facility for a walking tour of the indoor treatment lab and outdoor plant. Students were up close and personal with the necessary unpleasantness that is the Kent County's sewage. William Vincent, their tour guide for the time, divulged interesting facts, statistics and knowl-

edge about the awesome work they do every day so that the county can have clean water and lead healthy lives. The tour opened everyone's eyes to where our wastewater goes, how it effects the environment and the technology and human-powered science behind the mission.

After being energized by a fueling lunch break, the group of 21 leadership students listened to the auspicious ser-

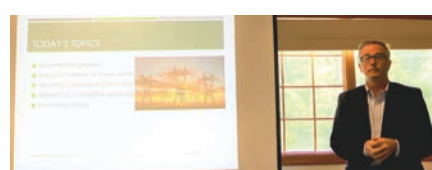
services and resources offered by Energize Delaware & the Delaware Sustainable Energy Utility (DESEU). Robin Coventry shared her time, expertise and helpful materials with everyone in the room. Students noted the importance of weatherizing homes and businesses to increase energy efficiency and conservation. Coventry highlighted the ways in which Energize Delaware helps low-income residents upgrade their appliances to save energy costs. She shared their plethora of programs such as Green Energy, Residential Solar Loans, Lights on Delaware Strong, ZeMod (“modular homes that produce as much energy through solar panels as they use annually”) and their Affordable Multifamily Housing Program. Students were astonished by the multitude of energy and cost saving initiatives offered by the organization.

ested, to receive hands-on, life-saving training in a simulated environment. Employee safety is top priority at Chesapeake, and students were able to see that for themselves.

Finally, to finish the day, the LCD Class of 2022 was taken on a driving tour of the Solid Waste Authority, by Mike Lenkiewicz, in Sandtown. Students were taken around the landfill as they asked questions about the facility and gained perspective about where their waste goes and how it’s treated. Landfills are definitely not the most glamorous place to be, but they are the reality of our environment that many people don’t get to see first-hand. It was good to provide the class with the opportunity to realize the landfill’s daily operation that results in Kent Countians leading healthier, cleaner lives.

Energy & Environment Day was an engrossing day for the LCD Class of 2022. Students ended their 10-month class sessions on a high note and gained so much perspective about the simple things we take for granted daily. Thank you to everyone who works so hard to keep Kent County energized and healthy. This was a day to remember!

Then, Energy & Environment Day transported the class to Safety Town! Safety Town is a new state-of-the-art training facility or Chesapeake Utilities Corporation’s Dover location at 500 Energy Lane. Safety Town is a million-dollar training facility designed to simulate the everyday experiences of gas technicians. The purpose of Safety Town is to allow, not only Chesapeake Utilities technicians but anyone inter-



Sponsors confirmed as of 9.21.21
 LCD Leadership Central Delaware
 A program of the Central Delaware Chamber of Commerce
 Thank you to our Sponsors!





LCD Closing Retreat 2022: What Did It All Mean?

The Leadership Central Delaware (LCD) Class of 2022 wrapped up their year with the Closing Retreat on June 10 at Harvest Ridge Winery. The purpose of the Closing Retreat was for the 21 new leaders in our community to summarize, reflect, inspire and ponder on the question, “so what did it all mean, anyways?” The LCD Class accomplished this together for a day that set the tone for their next steps as leaders.

The day began with breakfast and a heartfelt presentation from Tammy Ordway, Central Delaware native from Faw Casson, who spoke about the importance of building connections and remaining engaged in the community. She shared her deeply personal story of overcoming uncomfortable situations, such as being in a room where she didn’t know anyone and felt particularly intimidated, and where people have literally turned their backs to her. Her presentation moved all the hearts and minds in the room with the gentle reminder to always continue to be yourself, no matter who is around. One of the many applicable themes of her story was the benefit of putting oneself in uncomfortable situations when it comes to networking and building relationships within your community. It may seem easy for someone else on the outside, but one never knows the

challenges people are all facing daily. Staying involved with the community will always pay off in priceless ways. Patience is key.

Javier Santana, owner and founder of High Ground Creative, a full-service digital marketing and advertising company, was next to share his candid expertise on creativity and imagination. So many lightbulbs came to life in his listeners’ minds as he spoke passionately about how important it is to be creative, think outside the box and explore the unknown. He inspired any classmates who might have believed the myth that creativity only manifests itself through the arts. Santana explained how everyone has the ability to be creative in any industry, any task, anywhere. It is a muscle that many great leaders have developed, and he urged the class to take that same energy into their daily lives moving forward.

CDCC President Dr. Dina Vendetti led the class in discussing their best and most memorable moments throughout the 10-month journey they’ve just successfully completed together. Sweet emotions were high as the class shared specific moments that will stick with them forever. Questions such as “which day was your favorite and why,” “how might you stay in touch with your classmates,” “what advice would you give

to the next class,” and of course “what did it all mean?” were answered.

The LCD Class of 2022 has seen, heard, and experienced a lot of places; therefore it is so important to take a step back and reflect on the collective experience they’ve been through together. They now have a shared experience that will shape their lives in any way they choose — that’s a big thing to think about.

Last but certainly not least, the Rev. John G. Moore graced the class for an awe-inspiring and enthusiastic presentation on “Continuing Your Leadership Journey.” He shared his one-of-kind delivery, exemplifying the leadership of Dr. Martin Luther King Jr. himself. Class members were on their feet as they received John’s genuine love of life, uplifting others and meaning behind having a D.R.E.A.M. (Dedication, Resilience, Enthusiasm, Attitude, Motivation). It was a moment to be ingrained in their minds forever — you had to be there!

The closing retreat was just two weeks before the class was set to ceremoniously graduate at the CDCC’s Annual Awards for Excellence Celebration. In the air of graduations, there is this bittersweet feeling of mourning the end of an era along with the ambition of wondering what’s next. The class was eager

to hear about the amazing future opportunities available at the statewide leadership program, Leadership Delaware, Inc. Jen Cohan, CEO, was present to explain the advantageous program and all it offers. Following by Cohan was Dr. Kathy Kennedy-Ratajack, dean of the College of Business at Wilmington University to congratulate the class and share the significance of LCD alumni now having 3 credits to exercise towards a degree through its new partnership with the CDCC.

The LCD Class of 2022 sealed the deal with a toast and slideshow presentation to commemorate their pursuit of knowledge, relationships, legacy and of course, leadership. The CDCC thanks you for allowing us to be a small part of your journey as leaders here in Central Delaware. Thank you to this year’s program sponsors, which none of this would be possible without their support.

Congratulations to the LCD Class of 2022! We cannot wait to see what the future holds for you all! Lean on each other as you go forth and conquer in all that you do!

“Remember: every day, some ordinary person does something extraordinary. Today, it’s your turn!” - Lou Holtz

EXCELLENCE AWARDS

Continued from Page 1

for their support as well. A special thank you also to Advantech, Allen Insurance Group, Burns & Ellis Realtors, Delaware State News, Del-One Federal Credit Union, Dover Pools, Excel Business Systems, Faw Casson, Keystone Funding and Shore United Bank! Thank you to the event's Platinum Sponsors from Century Engineering, Chesapeake Utilities, Dover Federal Credit Union, Harrington Raceway & Casino, Kraft Heinz, L&W Insurance, PAM Rehabilitation Hospital of Dover and R&R Commercial Realty. The CDCC and Central Delaware community thank all these great local business for their continued support and generosity!

Join the CDCC in congratulating our 2022 Awards for Excellence Celebration winners!

Young Professional of the Year – **Matt Bacon, Roma Italian Restaurant**

Small Business of the Year – **Mike & Becky Marasco, Tre Sorelle Dolce Ice Cream & Mini Golf**

Large Employer of the Year – **Dover Federal Credit Union**

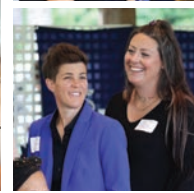
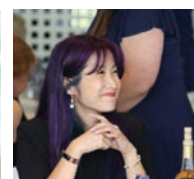
Partnerships of the Year – **Delaware State News and Kent County Tourism**

Volunteer of the Year – **Jason King, Legal Shield**

Board Member of the Year – **Rick Mohnk**

Ambassador of the Year – **Erlene George**

Thank you to everyone in attendance at the 2022 CDCC Annual Awards for Excellence Celebration at the beautiful Pizzadili Vineyard and Winery. Thank you to everyone for remaining engaged with the CDCC for another great year. Thank you for supporting your local community and Chamber throughout the year. The CDCC is so excited to begin a new fiscal year with our cherished community – we couldn't do it without YOU!





Congratulations to the LCD Class of 2022!

The Leadership Central Delaware (LCD) Class of 2022 officially graduated on Thursday, June 23, at the Central Delaware Chamber of Commerce's Annual Awards for Excellence Celebration at Pizzadili Vineyard & Winery! Seventeen new leaders proudly sauntered across the stage before 250-plus Chamber members, friends and family to receive their long-awaited diplomas. It was truly a moment to remember forever!

Central Delaware and the CDCC is blessed to have this class of vibrant, diverse and enthusiastic individuals successfully complete the Diamond program of the Chamber. Their tenacity, eagerness to learn and lead and positive outlooks exude what it truly means to be a leader in the community. The CDCC is so grateful to have the chance to get to know each and every student personally, grow with them and help them create relationships to last a lifetime. The LCD Class of 2022 became a family the moment they met at their Meet & Greet. It has been a beautiful journey to witness 21 people from completely different professional and personal backgrounds, bond together for an amazing 10-month journey!

The Leadership Central Delaware Class of 2022 received the insider's perspective of Kent County. Each month, they were exposed to tours, presentations and activities covering the most significant economic drivers in Kent County, from Agri-Tourism, Government & Politics, to Education and Health & Human Services, to name a few. They were introduced to the prominent leaders across Kent County, made partnerships and received answers to any questions they had – and they had many! The Class of 2022 is an inquisitive and driven group of individuals who are passionate, not only about their personal evolutionary journey, but the journey of others too. They realized that no matter the field or industry they are working in, they can be a leader by uplifting others.

On behalf of the CDCC and Central Delaware community, it has been a pleasure to facilitate the development of this Class's personal leadership skills and styles. The CDCC would like to commend the LCD Class of 2022 for their hard work, dedication and openness to the program. Central Delaware is very blessed to have these 21 new leaders in our community, paving the way for years to come. The

CDCC cannot wait to see what they do next! Congratulations to the LCD Class of 2022 – You did it, and Central Delaware is so proud of you!

Now Presenting the Leadership Central Delaware Class of 2022:

Rebecca Chance, Faw Casson

Maj. Leigh DeSantis, Dover Air Force Base, 512th Airwing

Travis Frey, Dover Federal Credit Union

Laura Garafoli, Lean on Me Caregiving

Matthew Harline, former Assistant City Manager of Dover

Sand Hoffman, Chesapeake Utilities Corp.

Ryne Johnson, Advantech

Chrissy Kyriess, Central Delaware Habitat for Humanity

Craig Lindstrom, Dover Air Force Base

Amanda Perdue, Delaware Breast Cancer Coalition

Kelly Pitts, Kent County Levy Court

Chef Beatrice Smith, Bea Delightful Bakery

Marilyn Smith, Dover/Kent County MPO

Dennis Spence, Century Engineering, Inc.

Angela Tibbitt, Faw Casson

Jessica Wakefield, Bally's Dover

Laura Walter, Delaware State News

Lauren Webb, Dedicated to Women

Charmaine Whyte, Delaware State University

Franck Yehiri, Delaware State University

Douglas Yorke III, Dover International Speedway

What an incredible group of people paving the way for generations to come...

If you or someone you know would like to know more about the Leadership Central Delaware program from the Central Delaware Chamber of Commerce, please do not hesitate to visit www.cdcc.net or give the CDCC office a call at (302) 734-7513. Together we can uplift, learn and lead for a brighter future for everyone!

CDCC Board and Staff Meet for Retreat

The Central Delaware Chamber of Commerce (CDCC) staff and board of directors met at the Tuscan-inspired restaurant, Benvenuto, in Milford on June 16 for their annual Board Retreat. The day kicked off with a fun icebreaker to create comfortability followed by a thought-provoking presentation from Rev. Dr. John G. Moore on the topic of group dynamics, motives, morals, values and vision. All of our synapses, hearts and minds were fired up for the meeting ahead.

The 2022 Board Retreat finalized the Chamber's 2021-2022 fiscal year and passed the next year's budget. The Board heard from the CDCC

staff about the accomplishments and challenges they've faced throughout the year, as well as possible solutions. After a break with a delicious lunch courtesy of the accommodating hosts, owners Lisa and Poncho of Benvenuto Restaurant, the group reconvened to proceed with the day's agenda. Tammy Ordway, past chair of the CDCC Board and current chair of the Finance Committee, delivered the budget spreadsheets for everyone to follow along, inquire and ultimately give their judgment—and which they approved.

The day wrapped up with everyone separating into breakout groups to discuss and answer various questions,

and then present them to the rest of the room. Groups brainstormed problems, ideas and solutions for questions pertaining to the promising future of the Central Delaware Chamber of Commerce.

The CDCC staff members would like to thank all its board members in attendance and in thought for taking the time out of their very busy schedules to help better the present and shape the future of the CDCC. We appreciate your time, hard work and commitment to the CDCC and are looking forward to working with you this year!



LCD Class of 2022 Soars to Success in Style!

The CDCC would argue that almost all Central Delaware residents know the sound of the gigantic C-17 flying over their house. It's a sound and presence you can't miss, as you catch a glimpse, or long after you hear it. It's truly a sight to see every single time.

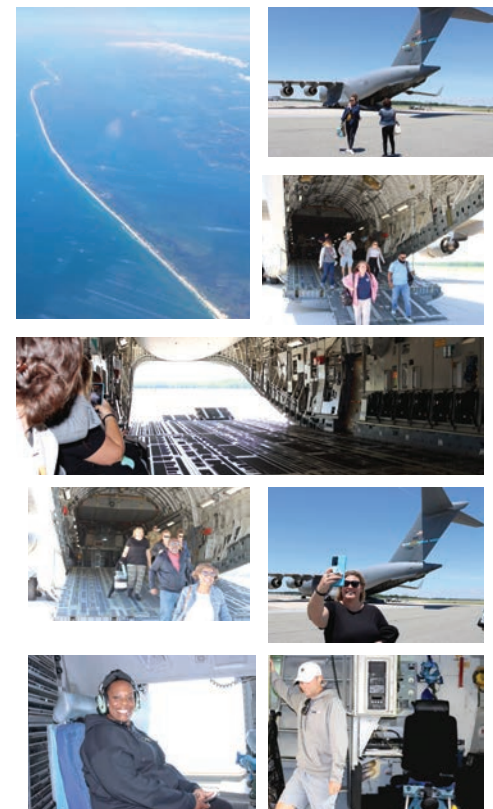
On June 15, the graduating LCD Class was invited to the Dover Air Force Base to accompany Airmen for a C-17 refueling mission. The class couldn't say no to this once-in-a-lifetime opportunity, not often given to civilians. The LCD Class of 2022 had a spectacular experience on their 3-hour flight on the DAFB C-17. They were in awe as they took turns sitting behind

the pilots in the flight deck over the Atlantic Ocean, racing the East Coast.

The CDCC would like to give a special thank you to Angela Nartowicz, Civ, DAF, 436th Public Affairs, Chief of Community Engagement, and her team for all their help in making this possible. Thank you for your service not only to the Class of 2022, but to our country. Central Delaware truly cherishes the sense of community we have with our servicemen and women at the Dover Air Force Base. Thank you so much for an unforgettable experience! It's always good to celebrate TEAM Dover!

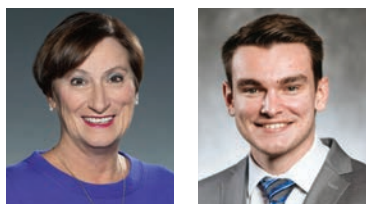


Courtesy of Senior Airman Faith Schaefer



Member News

Rockport Study 2.0 Evaluates Economic Development Options



The Central Delaware Chamber of Commerce (CDCC) met with Linda Parkowski, executive director of the Kent Economic Partnership (KEP) and Zachary Prebula, Business Developer for the KEP for an update on their most recent research initiative, Rockport 2.0.

The mission of KEP is to “spur economic development in Central Delaware.” This is accomplished through business attraction and retention programs by the KEP to promote employment opportunities of various industries. The KEP has been a unified voice for Kent County and the municipal government. The goal of KEP is provide, create and sustain “a diverse business climate in Central Delaware.”

The original Rockport study introduced in 2018 has evolved to provide leaders and the community an intensely detailed affirmation of which industries should be targeted in Central Delaware. The study recommended a

focus on manufacturing, warehousing, distribution and logistics, which are the key economic drivers for the future workforce of the County. Rockport 2.0 provided specific numeric details on the workforce population of Smyrna, Dover and Milford. The updated study revealed each municipality's differences, similarities, needs and prospects. The workforce is the top concern at this time for businesses. Thankfully, the Rockport 2.0 study also provides very detailed reporting on workforce data and commute lengths in the aftermath of the COVID-19 pandemic, which changed the workforce landscape dramatically.

Due to the results of this study, Parkowski is confident that Kent County is in a “good position for business attraction and expansion.” Delaware's tax-friendly structure is a key component of the state's allure. With this information from Rockport 2.0, Parkowski and Prebula can know where to most efficiently market job openings for businesses looking to move to Central Delaware. This will increase the probability of open positions and locations to be filled. The ripple effect of this work effects the entire County, including employee recruitment and retention. Knowing the strengths,

weaknesses, and analytics of Kent County will allow government officials to target the most beneficial industries for the overall economic prosperity of the County and future of the state.

The Rockport 2.0 study is an incredibly crucial tool for leaders, business professionals, and companies in the County that helps business leaders to know where to concentrate their marketing efforts. For example, in the task of filling the new 182-acre Milford Corporate Center, the study makes it easier to find companies to occupy that location, fill the void, and provide jobs that will fit the needs of Central Delaware's workforce. These are steps necessary to ensure a sustainable and flourishing future for all.

Parkowski is very excited about the information obtained through the Rockport 2.0 study, “Kent Economic Partnership is a very focused organization. The original 2018 Regional Rockport study gave us the blueprint for what we have been doing. We've had successes from following that data and we think that Rockport 2.0 will help us get to the next level and the new data that we now have,” explains Parkowski.

The team at Kent Economic Part-

nership wants the public to know that they are working hard secure a vibrant future for Central Delaware by marketing to viable companies who will contribute to the mission. Having the necessary information, via the Rockport 2.0 Study, is another huge step in accomplishing this goal. The future of Central Delaware is very bright and there are passionate, knowledgeable individuals, like Parkowski and Prebula, who are working behind the scenes every day to brighten the lives of many.

For more information about the Kent Economic Partnership or the Rockport 2.0 study, please visit the www.choosecentraldelaware.com or www.rockportanalytics.com.

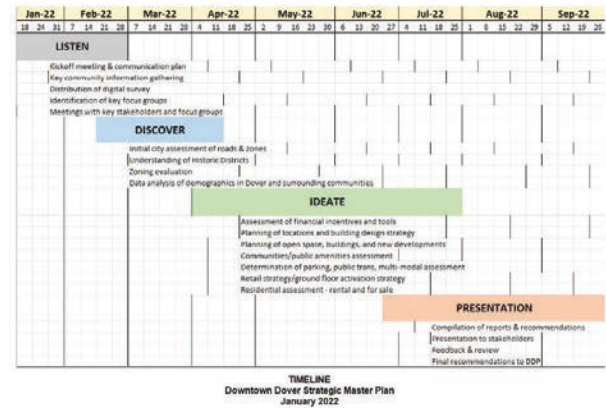
The Rockport 2.0 Study can be found at the following link: https://www.choosecentraldelaware.com/clientuploads/KEP_Final_Report_Target_Industry_Study_2020-21_FINAL_3-7-22.pdf.

The CDCC thanks the team at KEP for their hard work and diligent insight which enable Central Delaware to remain a great place to live, work and play.



Member News

What's Up in Downtown Dover!?



Exciting plans are in the works for the revitalization of Downtown Dover! The year of 2020 taught us all that the only thing constant is change. COVID-19 derailed many, many plans across the world, throughout every industry and community. We are still experiencing kinks in the supply-and-demand business chain that create delays in the plans we hope to execute — but if you look hard enough, you will see many opportunities to regroup, refocus and realign your plans to make an even greater comeback. Downtown Dover, Del., is at the cusp of change — take it from Diane Laird, executive director of the Downtown Dover Partnership (DDP).

The Central Delaware Chamber of Commerce (CDCC) met with Diane Laird to hear an update on the Downtown Dover Master Plan, which was created four years ago out of the need “to look at things from a new perspective, align our [the City’s] efforts, and make it happen.” Laird, her team at the DDP and community partners now truly feel that time is right for the public to see great change in their intimate town. The DDP is working closely with Mosaic Development Partners to create and execute a feasible revitalization plan for Downtown Dover over the next eight years.



The most recent charrette meeting held between both parties on May 11 was the first step in creating visual representations and concepts for the future of Downtown Dover (for the Master Plan, which will be completed in the fall of this year). There will be more scheduled charrettes in the coming months that will engage the community’s input. Soon, Delaware State University, Dover Public Library, Kent County Levy Court, Kent County Tourism and House of Coffi will present the visual concepts for the community to see and then share comments.

Laird shared the underlying logistics that must be addressed before visible change will be seen by the public in the Downtown Dover area. It is easy to overlook the underlying infrastructure problems because they are literally underground. Laird explained that the first task at hand is getting buildings downtown up to code for longevity, sustainability, safety, commercial and residential use. Laird prioritized sustainability throughout the Master Plan. While hosting big events is great, a top priority is to actually increase the residential population and housing access in the downtown area to create a place where action is still thriving after 5 p.m. This creates a sustainable future that can be steadily maintained. With proposed new housing, the hope is for residents to come from the off-base military, Bayhealth residencies and Delaware State University student populations. Purchases of land and necessary infrastructure advancements are in the works. The public can expect to see shovels in the ground by fall 2022.

Additional utilities, sewer, ADA standards, fire suppression techniques and comprehensive parking are all obstacles that are being addressed in this update of the Master Plan. Crime prevention, facade improvements, commercial kitchens and overall move-in-ready buildings are a top priority as well. Laird oversees applications for grants from the DDP to fund the project alongside market analyzers, architects and developers from Mosaic, who see the Downtown Dover sector full of untapped potential.

Laird uses her experience in state-wide interior design to work from a bird’s eye of view. She loves being able to work more locally with her community on a Master Plan such as this. She is inspired by the desire for change from the community and feels the “puzzle is falling into place” at this point in time. To work closely alongside the Central Delaware community is the most gratifying part of her profession.

“This [the Master Plan] will come to life with an entire community being gathered for a common goal — a sustainable future.” Laird made it clear that “this is and must be a unified effort to get everyone on the same page and excited while doing so.”

One of the biggest challenges Laird faces in her revitalization responsibility are the naysayers — those who don’t believe it can be done. Luckily, she hasn’t run into too many. She is surprised by the overall desire for change

and willingness to help from the local community. Dover is truly Dover Strong!

“Get ready. Things are going to happen. We’re doing things we have never done before. We’re not waiting [for change] to happen anymore — we are making it happen,” Laird tells the public. Once fully finalized this fall, executing the Downtown Dover Master Plan will be a team effort that engages people at all levels in the process and will require the community’s input.

The CDCC is proud to work alongside the team at the Downtown Dover Partnership with the common goal to continue making Central Delaware THE place to live, work, and play! The CDCC is so excited to stay informed on this journey with the DDP and public Central Delaware community. Here’s to the next eight years!

For more information from Diane Laird, Downtown Dover or on the Master Plan please feel free to visit their official website at www.downtowndoverpartnership.com please stay involved with the future of our treasured community every step of the way — we need you!



For more information about the CDCC’s July 27th Sunset Business Mixer at CDHFH ReStore Center in Dover from 5 to 7 p.m., do not hesitate to call the Chamber office at (302) 734-7513. The CDCC is always excited to welcome its members to a new location to connect and grow with each other. Register today – the CDCC can’t wait to see you!



SUNSET MIXER

Continued from Page 1

ity’s (CDHFH) ReStore Center to learn about this amazing nonprofit organization and experience the positive atmosphere. One of the best things about the CDCC’s Sunset Business Mixer is that you never know who you may meet and what new relationships you may make. This monthly event is known for bringing the community together in a fun way that allows everyone to help each other grow Central Delaware together!

Enjoy drinks and refreshments with your local community as you expand your network, catch up with colleagues, and meet new friendly faces, in a new location. The Central Delaware Habitat ReStore in Dover is a nonprofit home improvement store and donation center. The team at CDHFH sell new and gently used furniture, appliances, home accessories and more to the public for a fraction of retail price! Proceeds go to towards fulfilling the mission the of the organization: “seeking to put God’s love into action, Habitat for Humanity brings

people together to build homes, communities and hope.” CDHFH works to transform lives and revitalize Kent County communities by building and repairing quality homes in partnership with families in need.

For more information about Central Delaware Habitat for Humanity and their ReStore Center, please feel free to contact their team at www.centraldelawarehabitat.com or call (302) 526-2366. There are plenty of volunteer opportunities for the community to get involved to make a big difference!

Member News

Westside Family Healthcare serves community farm workers

One of the best things about summer is your favorite fruits and vegetables coming into season. For a few months we get to savor the bright taste of our favorites, ripened to perfection. For many of us, summertime is synonymous with strawberries, watermelon, cantaloupe, peaches, sweet corn, squash, cucumbers and tomatoes, just to name a few. We get excited when we stop by that familiar roadside farm stand to stock our cooler on the way to the beach, but most of us rarely take a minute to think about how our summer favorites are now within arm's reach.

Migrant and Seasonal Agricultural Workers (MSAW) work long, strenuous hours, under intense conditions to get fresh, favorite foods to our plates. The physically demanding nature of the work highlights a common lesson learned from the COVID-19 pandemic that "health is indeed wealth." Without healthy agricultural workers working every day, our plates, minds, and bodies would be missing nutrients, happiness and energy. Migrant and Seasonal Agricultural Workers throughout Delaware generate revenue, improve quality of life, and build a sense of community.

A community resource that understands these implications fully is Westside Family Healthcare, a federally qualified health center with locations throughout Delaware, including Dover. Since 2011, Westside has provided care for Delaware's agricultural workers, a community significantly underserved and incredibly essential. The CDCC met with three Westside representatives to learn more about how they are caring for this special community, leading health equity for all and supporting the local agriculture industry.

Primary care services, hygiene kits, towels, toothpaste, vaccines, PPE, point-of-care testing are just a few items and services workers can utilize from Westside's Mobile Health Unit (MHU). The MHU is a traveling hub of healthcare services, wellness items

and transportation. Reynaldo Gomez, supervisor of Rural Health Outreach, knows he's done something good when he sees the smile on the faces of farmworkers after receiving much needed care through medical services or by being able to provide the workers with arm sleeves that protect them from sunburn, insects and pesticides. Gomez oversees the MHU's operations as it serves an average 60 patients a week. The MHU travels to farms and housing encampments after work hours so the workers can receive care and not miss work. Gomez appreciates that Fifer's farm knows the value in keeping their workers healthy. Reynaldo shares that for many this is the only way workers can get healthcare because it resolves their transportation and financial barriers. He also makes connections with individuals and organizations who may know of communities who need access to healthcare or who are interested in donating items or services to help with hygiene kit items and assembly.

Erica Patosky, Certified Nurse Practitioner, loves the opportunity to provide hands-on care to this community, especially at Fifer's because of the relationships she's built with patients in her care. It is greatly gratifying for her to follow-up with a farmworker at Fifer's and hear good news that they've lowered their blood pressure and cholesterol, or received a vaccine or relief from their chronic pain. She also likes that she can provide holistic care at the time of the patient appointment. This can mean seeing a patient who is sick and prescribing and providing an antibiotic stocked on the MHU. The patient does not have to travel to a pharmacy to receive treatment. Patosky notes that this initiative is a total team effort that she is so proud to be a part of, whether that is completing physicals, delivering medications, or just being a kind, familiar face to the workers.

Patosky's teammates revere her as a hero who is always ready and willing



to help someone in need, wherever and whenever that may be. She credits her inspiration to be her "innate desire to help people. The workers are so thankful; it just feels good" to help workers through the MHU. Although there are many long nights spent working on the MHU, Patosky loves it because the work is so rewarding and keeps her engaged. Hearing "you saved my life!" from a worker in need makes it all worth it for her. Patosky sees the future of this initiative and mission of the MHU growing, specifically for women's health. She is working hard to see that more care options for fetal and pregnant mothers become available.

Leading the rural health outreach team is Debbie Bryant, director of Clinical Operations and Family Nurse Practitioner, who oversees the logistics of the MHU like staffing, relationships with the farm owners, addressing language barriers, and communicating with Westside's MSAW advisory committee to name a few. Bryant has been fortunate to see this initiative grow and evolve from its infancy in 2011. Over this time period of her working for agricultural workers she has created amazing relationships that have contributed to the outreach of the program.

The COVID-19 pandemic and its challenges shifted her team's focus to realize that their work is more important than ever. Bryant is passionate about being an advocate for health care access for all, regardless of ability to pay, and "closing the loop" on the social determinants of health for the holistic wellbeing of the person. Bryant believes the MHU is a unique way to reduce these disparities of the workers and the farms, like Fifer's, who

are proactive in caring for the workers who put food on our tables. She is thankful for the local community partnerships she has made that continue to make this program a success, especially during peak summer season.

The team at Westside Family Healthcare serving the farmworker community here in Delaware sees the positive impact their work is doing. WFH is helping to avoid hospitalizations, empower the underserved, and support one of Delaware's biggest industries. The effects of their work impact the Central Delaware community because of the privilege of enjoying fresh foods that help us lead healthier, happier lives. Westside Family Healthcare is a community healthcare leader not only in Delaware, but the country, showing what it truly means to care for others and your community from the inside out.

If you are interested in learning more about the life-saving work, donating, or getting involved in Westside's mission, please visit their website at www.westsidehealth.org or email externalaffairs@westsidehealth.org. Join the Central Delaware Chamber of Commerce in appreciating the men and women who work tirelessly to put food on our tables, and those who see the critical need to support them. Thank you for all that you do to keep our community safe, happy and healthy!



Your Town. Your Voice.
Your News.



Edward Jones



Christopher Smith
Financial Advisor
CFP®, AAMS®

302.735.8770

WE ARE LOCAL AND WE ARE HERE FOR YOU

Complimentary Portfolio Review
Personalized Financial Strategies
Strategic Planning

Member News

Your Fun Fair Foodie Favorites are Back this July!



Deep fried Oreos, kettle corn, funnel cake, turkey legs and pizza on a stick all within walking distance of each other while the smell of hot oil wafts past you ... you're surrounded by bright lights, a Ferris wheel rounds in the distance, bells are ringing, suddenly you remember you pet almost an entire zoo earlier, and now the sun is setting. You hear screams of excitement and laughter as bodies are tossed round and round on The Zipper above your head. You and your best friend look at each other. One looks up, the other shakes their head. Next you find your feet above your head too many times to care. You're at the 2022 Delaware State Fair!

"Conceived around a potbelly stove in the Harrington railroad station in 1919," the Delaware State Fair was just an idea ... which soon led to the Kent and Sussex County Fair incorporated in January 1920. This year, the Delaware State Fair celebrates its 103rd anniversary when the gates open on July 21 and close on July 30. An average of 300,000 people will experience the magical charm of this long-standing tradition.

The Central Delaware Chamber of Commerce caught up with Danny Aguilar, CFE, assistant general manager & director of marketing for the

Delaware State Fair for over 15 years, to discuss just some of the highlights of this year's event. The 2022 theme is "Summer Nights & Carnival Lights," which will make those feel-good nostalgic memories come flooding back or create new ones to last a lifetime with the ones you love.

Aguilar is proud to continue and stay true to the foundational principle that founded the Delaware State Fair: "to support and showcase our agricultural community," he said. "We feel that Delaware has always been committed to having a strong livestock community, but things change, communities change, so we want to make sure we keep the 4 H-programs and FFAs of the world out there so kids can recognize that it's a great educational outlook for them." Aguilar considers it an honor to be a part of the "agriculture family" here in Central Delaware.

Dedicated fans and newcomers alike have so much to look forward to this year. Aguilar is particularly excited to showcase the wonderful musical talent soon to grace the M&T Bank Grandstand. The lineup includes performances by Sam Hunt, Nelly, ZZ Top, Toby Mac, Trace Adkins and more! Every year Aguilar looks for new way to diversify talent to satisfy the interests of guests. About 8.7 percent of the attendance population of the Delaware State Fair is Hispanic. The addition of Frank Reyes to the musical lineup is a highly anticipated performance for 2022.

Aguilar and his team are committed to keeping the Delaware State Fair fun, fresh, safe and innovative. The Delaware State Fair is a registered as 501(c)(3), which means all profits are reinvested back into the organization

to improve the next year. From adding large circulating fans for the animals' welfare, to upgrading grounds entertainment, the Delaware State Fair is so excited to welcome everyone back into its Harrington gates.

Guests are also encouraged to visit the official website, www.delawarestate-fair.com for an extensive entertainment guide, daily schedule, more information, tickets and an abundance of saving opportunities for the whole family! Be sure to help the Delaware State Fair give back to the community by participating in the food drive with Food Lion and by showing your support for Delaware's incredible agriculture community.

Mark your calendars, schedule your day, your weekend, or week, as you enjoy your staycation at the 2022 Delaware State Fair. The Central Delaware Chamber of Commerce is so proud to witness this tradition and applaud the hard work and dedication of Aguilar and the entire Delaware State Fair staff, Board of Directors, volunteers, partners, vendors, and of course the guests!

The CDCC and everyone at the Delaware State Fair wishes Central Delaware a happy, fun, and safe time on the fairgrounds this July 21-30!



Central Delaware Chamber of Commerce Members

(as of June 17, 2022)

302 Aquaponics
 512th Airlift Wing
 A & H Uniforms
 A Center for Mental Wellness, Inc.
 A Registered Agent Inc.
 A to Z Cycles, Inc.
 A2Z Services
 AAA Midatlantic
 AARP Delaware
 ABI Security Group, Inc.
 Absolutely Flawless Women Inc
 Academy of Dover Charter School
 Accurate Tint And Graphics
 Ace Handyman Services Dover
 ACN
 Action Unlimited Resources
 Activ Pest Solutions
 Actors Attic Embroidery Division
 ADT Commercial
 Advantech Incorporated
 Aetna
 Affinity Energy Management
 Affinity Entertainment DE LLC
 Affinity Home Care Services, LLC
 Affordable Business Systems
 AHDTV Network
 Air Force Association Galaxy Chapter
 Air Mobility Command Museum
 All American Electric Service LLC
 All Around Maintenance, LLC
 All Restored Inc.
 All Smiles Family & Cosmetic Dentistry
 All States Construction Company, Inc.
 Allen Ins. Assoc Inc. t/a Allen Ins. Group
 Allstate Insurance – Michael Tolliver
 Allstate – LaToya Johns Agency
 Aloysius Butler & Clark
 Alpine and Rafetto Orthodontics
 Alternative Solutions
 Always Advertising, Inc.
 Alzheimer's Association – Delaware Valley Chapter
 AMB Mobile Massage & Wellness Center LLC
 American Kidney Care of Dover
 American Legion Post 14 & Station 64
 Americare Home Solutions
 Angle Mortgage Network
 APG Media of Chesapeake (Adam's Publications Group)
 Artesian Water Company, Inc.
 Artisans' Bank
 ARTT Studio 4 Hair
 Atlantic Apothecary, Inc.
 Atlantic Concrete Co., Inc.
 Atlantic Refrigeration & Air Conditioning, Inc.
 Atlantic Sands Hotel & Conference Center
 Delaware State Attorney General's Office
 Auntie Anne's Soft Pretzels
 Avery Hall Insurance Group
 George Bailey
 C.M. Baker Photography
 Bally's Dover Casino Resort
 Bangkok Thai Cuisine Corp
 Barkley Heating & Air, LLC
 Barros, McNamara, Malkiewicz & Taylor, P.A.
 Barzey Enterprise LLC
 Bavarian Bakery & Deli
 Bayhealth Medical Center
 BBSI
 BDK, Inc.
 Be Well Massage and Skin Care
 Bea Delightful
 Beaverdam Pet Food, Inc.
 Becker Morgan Group, Inc.
 Bel Boutique, Inc.
 Bella MediSpa
 Beltone Hearing Center
 Benchmark Builders
 Representative Andria L. Bennett
 Bennie Smith Funeral & Limousine Services
 Benton Lynn Law, P.A.
 Benvenuto, LLC
 Robert M. Berglund
 Berry Van Lines, Inc.
 Best Western Galaxy Inn
 Better Business Bureau Serving DE
 BFPE INTERNATIONAL Fire, Safety & Security
 BIG Investment Services
 Biggs Museum of American Art
 Black Diamond Financial Solutions, Inc.
 Black Swamp Artisanal Market, LLC
 Blood Bank of Delmarva, Inc.
 Blue Dogg Design
 Blue Hen Apts LLC
 U.S. Congresswoman Lisa Blunt Rochester
 Board and Brush Creative Studio
 Bob Johnsons Computer Stuff, Inc
 Boeing
 bombshell hair studio Inc.
 Senator Colin Bonini
 Greater Smyrna-Clayton Boys & Girls Club
 Greater Milford Boys & Girls Club
 Greater Dover Boys & Girls Club
 Brick Works Brewing & Eats
 Bright Future Pediatrics
 Bright Side Exteriors
 Brighton Suites Hotel
 Brookdale Dover
 Brooks Machines
 Builders Integrity, Inc.
 Burke Equipment Company
 Burns & Ellis Realtors
 Representative William Bush
 Butler Health Coaching
 Byler's Store, Inc.
 C&M Custom Homes
 C&N Services, LLC.
 Cadia Rehabilitation Capitol
 Caesar Rodney School District
 Town of Camden
 Camden Pharmacy
 Camden Walk In
 Camden Wyoming Rotary Club
 Camp Adventureland
 Cancer Support Community Delaware
 Capital Inn of Dover
 Capital School District
 Capitol Cleaners & Launderers, Inc.
 Capitol Uniform & Linen Service
 Capriotti's of Dover, Inc.
 Care First Dental Team – Robert R. Coope, DDS
 Carey Insurance Group
 Governor John Carney
 U.S. Senator Thomas R. Carper
 Carroll Properties ,LLC
 Representative William J. Carson
 Caruso Homes, Inc
 Celestial Shoes
 CenDel Foundation
 CenterPoint Church
 Central DE Habitat for Humanity
 Central Delaware Chamber of Commerce
 Central Delaware Housing Collaborative
 Central Delaware Speech Language Pathology
 Century Engineering, Inc.
 CertaPro Painters of Delaware
 Chaiyo Sushi & Thai Cuisines
 Chaiyo Sushi & Thai Cuisines – Camden
 Cheddar's Scratch Kitchen
 Chesapeake Utilities Corp.
 Town of Cheswold
 Chicka Artistica
 Chick-fil-A of North Dover
 Chick's Saddlery
 Children & Families First
 Choices for Community Living – Delaware
 Christiana Care Visiting Nurses Association
 Citizens Bank
 City Wide Facility Solutions Delaware
 ClearCaptions
 CNU Fit, LLC
 Coastal Bath Company
 Coastal Car Wash
 Coastline Realty
 Colonial Investment & Management Co., Inc.
 Comcast
 Comfort Inn – Rehoboth
 Comfort Inn & Suites Dover
 Comfort Suites – Dover
 Compass Investment Advisors, LLC
 CompleteCare @ Silver Lake
 Conner Strong & Buckelew
 Cool Springs Fish Bar & Restaurant
 U.S. Senator Chris A. Coons
 Cooperative Credit Union Assoc
 Corp1, Inc.
 Correctional Officers Assoc. of Delaware
 Courtland Manor, Inc.
 Courtside Pickleball & Tennis Club
 Create My Meditation PEACE
 Creative Logo Apparel
 CW Weddings & Event Planning LLC
 D.R. Horton
 Sandy Dale
 Delaware Alliance for Nonprofit Advancement
 Delaware Transit Corp/DART First State
 Delaware Aero Space Education Foundation
 Dawson Bus Service, Inc.
 DE Advisory Council on Career and Technical Education
 DE TURF Sports Complex
 Decorating Den Interiors
 Delaware Agriculture Museum
 Delaware Association of Realtors
 Delaware Black Chamber of Commerce
 Delaware Brain and Spine
 Delaware Breast Cancer Coalition, Inc.
 Delaware Brick Co.
 Delaware Charitable Music, Inc.
 Delaware Choral Society
 Delaware Community Foundation
 Delaware Contractors Association
 Delaware Crime Stoppers
 Delaware DNREC
 Delaware Department of Insurance
 Delaware Department of Labor – Employment and Training
 Delaware Department of State
 Delaware Department of Transportation
 Delaware Dept. of Labor, Division of Vocational Rehabilitation
 Delaware Diagnostic Labs
 Delaware Division for the Visually Impaired
 Delaware Division of Libraries
 Delaware Division of Small Business
 Delaware Electric Cooperative, Inc.
 Delaware Farm Bureau
 Delaware Health Information Network
 Delaware Hospice, Inc.
 Delaware Imaging Network
 Delaware Indoor Advertising Network, LLC
 Delaware Motor Transport Association., Inc.
 Delaware National Guard
 Delaware Prosperity Partnership
 Delaware Prostate Cancer Coalition
 Delaware Public Media
 Delaware River & Bay Authority
 Delaware Senior Medicare Patrol
 Delaware Shoppes
 Delaware Solid Waste Authority
 Delaware State Auditor Kathy McGuiness
 Delaware State Chamber of Commerce
 The Delaware State Fair, Inc.
 Delaware State Housing Authority
 Delaware State Lottery
 Independent Newsmedia, Inc., USA
 Office of the State Treasurer
 Delaware State University
 Delaware Submarine Association Inc.
 Delaware Technical Community College – Terry Campus
 Delaware Thunder Professional Hockey Group
 Delaware Today Magazine
 DelMarVa Acupuncture & Wellness Center
 Delmarva Benefit Group
 Delmarva Digital
 Delmarva Pole Buildings
 Delmarva Power
 Delmarva Printing Inc
 DelMarVa SHRM
 Delmarva Underwriters, Ltd.
 Delmarva Veteran Builders
 Del-One Federal Credit Union
 Delwood Trailer Sales, Inc.
 DEMEC
 Diamond State Financial Group
 Diamond State Party Rental
 Diamond State Pest Control, LLC

Central Delaware Chamber of Commerce Members

Diamond State Pole Buildings
 DiBioso's Cleaning & Restoration Services Inc.
 Dija's African Food Market
 City of Dover
 Dover / Kent County MPO
 Dover Air Force Base
 Dover Army Navy Store, Inc.
 Dover Behavioral Health System
 Dover Capital City Rotary
 Dover Community Pharmacy
 Dover Downtown Rotary
 Dover Electric Supply Co., Inc.
 Dover Elks Lodge #1903
 Dover Family Chiropractic
 Dover Federal Credit Union – Headquarters
 Dover Federal Credit Union – Smyrna
 Dover Health Care Center
 Dover Housing Authority
 Dover Interfaith Mission for Housing
 Dover Mall LLC
 Dover Motor Speedway
 Dover Place Senior Living
 Dover Pools
 Dover Post Co.
 Dover Public Library
 Dover Skating Center
 Dover Spouses' Club
 Dover Tents & Events, a div. of Collective Event Group
 Dowding Resource Group
 Richard Downes
 Downtown Dover Partnership
 Friends of the Duck Creek Regional Library
 Eagle Group (Metal Masters)
 Eagle Nail & Tool Supply of Milford LLC
 Easterseals DE & MD's Eastern Shore
 Eddee Boone Consultant LLC
 Eden Hill Medical Center
 Edgewell Personal Care
 Edward Jones – Daneman
 Edward Jones Investments – Christopher Smith, CFP®
 Edward Jones – Wearden
 Effectv
 Elevations Unlimited
 Elizabeth Esther Café
 Emlyn Construction Company
 Emmons
 The Emory Hill Companies
 Encompass Health Rehabilitation Hospital of Middletown
 Energy Leadership, LLC
 Senator Bruce C. Ennis
 Enoch Stevenson Insurance
 Environmental Alliance Inc.
 Eric Crossan Photography
 Delaware Employer Support of the Guard & Reserve
 Essential Beginnings Behavior & Learning Services
 Eunity Solutions
 EUPHORIC HERBALS
 Evan W. Smith Funeral Services
 Evergreen Farms
 Everyday Hero CPR & First Aid
 Excel Business Systems
 Executive Transportation Inc.
 Express Care Walk In Medical Centers
 Eye Specialists of Delaware
 Eye Specialists of Delaware – Milford
 Fairfield Inn by Marriott, Dover
 Fairway Independent Mortgage Corporation
 Falling off the Bone BBQ and Fish Fry
 Family Dental Associates
 FANTINI RESEARCH
 Faw Casson
 FCCB
 Ferris Home Improvements
 Fifer's Farm Store & Kitchen
 Fireside Partners, Inc.
 Firestone Complete Auto Care
 First Class Properties
 First Command
 First Home Mortgage
 First State Community Action Agency
 First State CPAs
 First State Educate
 First State Heritage Park
 First State Manufactured Housing Assoc.
 First State Military Academy (FSMA)
 First State Orthopaedics

First State Webfooters
 Jim Flood Sr.
 Fly High Cheer and Tumble
 Flyover Fun Park , LLC
 FOLDS LLC
 Fordham & Dominion Brewing Co.
 Forever Media Inc.
 Fort Sill National Bank
 Fowler Group Keller Williams Realty
 Friends of Delaware Veterans Inc.
 Fur Baby Pet Resort
 G. Fedale Roofing & Siding – Lewes
 G. Fedale Roofing & Siding – Wilmington
 Gals that Give
 George & Lynch, Inc.
 Gerald Reilly IMC
 Gifted Hands 2, LLC
 Go Glass
 Goeins Williams Associates Inc.
 Good News Natural Foods
 Gracious Heart Nursing Services, LLC
 Greater Kent Committee
 Green Clinics Laboratory
 Green Diamond Builders, Inc.
 Grey Fox Grille
 Grotto Pizza – Dover
 Growing Bones Pediatrics + Neuromuscular Orthopaedic In
 G's Down Too Earth Landscaping
 HAASS' Family Butcher Shop
 Ray Hall
 Lt. Governor Bethany Hall-Long
 Hall's Family Restaurant
 Hampton Inn – Dover
 Hampton Inn – Milford
 HandyTube
 Harmony at Kent
 City of Harrington
 Harrington Business Association
 Harrington Raceway & Casino, Inc.
 Harrington Realty, Inc.
 Harvest Ridge Winery
 Harvest Years Senior Center
 Hay Where's That, Inc
 Heart to Heart Health Services LLC
 Heartland Payment Systems
 Hempworx/MDC – Surowiec
 Heritage Shores
 Heritage Sports Radio Network LLC
 Hertrich Family of Automobile Dealerships
 High Ground Creative LLC
 Highmark Blue Cross Blue Shield Delaware
 Hilton Garden Inn
 Holden Dodge, Inc.
 Holiday Inn Express
 Holiday Inn Express – Harrington
 HOME 2 Suites / Axia Management
 Home Builders Association of Delaware
 Home Instead Senior Care
 Homeside Financial
 Homestead Gardens
 Hook PR & Marketing
 Horthy & Horthy, PA – Douglas R. Phillips
 How Bout Dat Standardbred Training
 Michael C. Howard
 Hudson, Jones, Jaywork & Fisher
 Humana – Lisa Parker
 Hunt Military Communities
 i.g. Burton & Co., Inc.
 iDIMENSIONS Alignment for Success
 IHeartMedia
 Imagine
 IMD4
 Incorporating Services, Ltd.
 Independent Metal Strap Co., Inc.
 Independent Resources, Inc.
 Ingleside Homes Inc.
 Instant Imprints of Delaware
 Iron Source
 J.A. Hill Associates
 Janney Montgomery Scott LLC
 Jax n Daisy, Inc.
 Jazzercise at the Capital Grange
 JBA Greentree Properties LLC
 JDM No. 1 Plumbing, LLC
 JDog Junk Removal
 Jefferson, Urian, Doane & Sterner, PA

JEM Pest Solutions Inc.
 Jen-Mor Florist
 Jeweler's Loupe
 Jobs for Delaware Graduates
 John H. Brothers
 Johnny Janosik, Inc.
 Jonathan L. Parker & Associates, LLC
 Jonathan's Landing
 Ceil Jones, Realtor / Myers Realty
 JP's Wharf LTD
 Juul Labs
 K. Hovnanian Homes of DE, LLC
 Kaizen Karate Academy
 Mary F. Kaltreider
 KCI Technologies, Inc.
 Keller Williams Realty Central Delaware
 Ken Stockslager & Son, Inc.
 Kent County Association of REALTORS
 Kent County Levy Court
 Kent County Motor Sales Co.
 Kent County Republican Committee
 Kent County Sheriff
 Kent County Tourism Corporation
 Kent County Women's Journal
 Kent Economic Partnership
 Kent Sign Co.
 Kent-Sussex Industries, Inc.
 Key 2 Clarity Counseling Services
 Key Advisors Group, LLC
 Keystone Funding
 C.S. Kidner Associates/Capitol Strategies
 Kimberly Willoughby – Patterson Schwartz
 King Cole Farm
 Shawna Kirlin, Realtor with Patterson Schwartz
 Knights Fine Jewelry Ltd.
 Koski Enterprises Inc.
 Kraft Heinz Company
 KRM Development Corporation
 Krystal Osisek: AllState Insurance
 L & W Insurance Agency
 La Baguette Bakery & Catering
 Monarcas Inc. La Hacienda
 LakeView Realty, Inc.
 Landmark Science and Engineering
 Laura's Choice
 Law Offices of Bonnie M. Benson
 Senator David G. Lawson
 Leadership Delaware, Inc.
 Leadership Techniques, LLC
 Lean On Me Caregiving, LLC
 Leander Lakes, LLC
 Legal Shield – Jason King
 Lenape Builders, Inc.
 Lessard Builders, Inc.
 Janie Libby
 Liberty Tax Service
 Lighthouse Construction, Inc.
 Lisa Pearson, Realtor – Diamond State Realty
 Liza Orlando, Realtor – Keller Williams Realty
 LOCALiQ Delaware
 LongHorn Steakhouse
 Lookback Lab
 Lawrence A. Louie, DMD
 Love Bella Creations
 Luff & Associates, PA
 Luther Towers of Dover
 Representative Sean M. Lynn
 M&D Plumbing and Drain Cleaning Spec. Inc.
 M&T Bank – Dover Main
 Magnum Electronics, Inc.
 Mail Movers
 Eagle Hospitality Group, LLC – MainStay Suites
 Maple Dale Country Club
 Mark Group Companies LLC
 Maxed Out Vape
 McDonald's
 McGinnis Commercial Real Estate Co.
 McKinney's Towing & Road Service
 Meals On Wheels Delaware
 Meridian Bank Mortgage Center
 Merle Norman Cosmetics Studio
 Merrill Lynch
 Merry Maids
 Michelle Fisher, Realtor – Bryan Realty Group
 Mid Atlantic Scientific Service Inc
 Middletown Area Chamber of Commerce

Central Delaware Chamber of Commerce Members

Dan Mikkelson
 Chamber of Commerce for Greater Milford, Inc.
 Milford Wellness Village
 Military Officers Association of America – Dover Chapter
 Miller Environmental Group Inc
 Miller Mortgage Group at AnnieMac Home Mortgage
 Miller's Roofing & Coatings, LLC
 Mishoe
 Mispillion River Brewing
 Mission BBQ
 Mitten & Winters, CPA
 Modern Maturity Center, Inc.
 Mohawk Electrical Systems, Inc.
 Money Transformation Coach
 Moore Seal, Inc.
 Morning Star Publications / The Business Report
 Representative W. Shannon Morris
 Mountain Consulting Inc.
 Movement Mortgage
 Mt. Zion A.M.E. Church – Dover
 My Instant Team
 My Roots
 My Salon Suite
 NAWBO Delaware Chapter
 NCALL Research, Inc.
 Nephrology Associates, PA
 New Image Inc.
 New U Nutrition
 Next Level Nutrition
 NextHome Preferred
 Nickle Electrical Companies
 N.K.S. Distributors, Inc.
 Noble's Pond
 NorthNode Group Counseling
 Northpointe Bank
 Ocean Marine Nav Inc.
 Office Pride Commercial Cleaning Services
 Peter A. Oldziej
 On The Move Realty LLC,
 OnQ Financial
 Orthopaedic Consultants
 Outback Steakhouse
 Ronald B. Outten
 PACE Your LIFE
 PAM Health Rehabilitation Hospital of Dover
 Senator W. Charles Paradee
 PARASEC – PARACORP Inc.
 Parkowski, Guerke & Swayze, P.A.
 Parkview RV Center
 Pathways to Success, Inc.
 Pats Select Pizza
 Patterson Schwartz
 Paul Edwards Carpet
 Payroll Management Assistance
 PC ChristianRadio
 People Ready
 People's Place
 Pepsi Bottling Ventures of Delmarva
 Personal Protective Products
 Pike Creek Mortgage Services, Inc.
 Pinnacle Rehabilitation & Health Center
 Pizzadilli's Deli and Catering/Winery
 PJJVideoFilm.com
 PNC Bank
 Pole Building Supplies
 POLYTECH Adult Education
 POLYTECH School District
 Service Energy / Poore's Propane
 Porter's Sand & Gravel, Inc.
 Portrait Express
 Positive Outcomes Charter School
 Representative Charles S. Postles Jr.
 PPG Paints
 PR Delaware LLC
 Pratt Insurance, Inc.
 Precision Garage Door of Delaware
 Premier Staffing Solutions
 Pressley Ridge
 Primerica – Erlene George
 Procter & Gamble
 Proforma Dynamic Resources
 Progressive Software Computing Inc – PSCI
 Provident State Bank
 PS Surety Consulting, LLC
 Pugh's Service
 Quality Builders Inc.

Queen's Beauty Bar
 R & R Commercial Realty, Inc
 Raymond F. Book & Associates, PA, CPA's
 Read Aloud Delaware
 Red Wing Shoes
 Regulatory Insurance Services, Inc.
 Rely Tool Supply, LLC
 Remax Horizons
 Rene' DeLyn Hair Designs
 Renewal by Andersen
 Residence Inn, Dover
 Restaurant 55 / DDEGE Investments, LLC
 Richard Y. Johnson & Son, Inc.
 Roberts Insurance, Inc.
 Roma Italian Restaurant
 Roma Pizza
 Ronald McDonald House of Delaware
 Rooah! LLC
 RPJ Waste Services, Inc.
 Retired & Senior Program of Kent County
 S&G Accounting & Tax Services
 Sack Health Benefit Advisors, LLC
 Saladworks
 The Salvation Army
 Sambo's Tavern
 Sandra S. Gullede, CPA, PA
 Sayers Jewelers & Gemologists Inc.
 U.S. Small Business Administration
 SBT Signs & Graphics
 Scentsy
 Schlosser & Associates Mechanical Contractors
 C.F. Schwartz Motor Co., Inc.
 SCORE Delaware
 Seasons Hospice & Palliative Care of Delaware
 Secure Data Computer Solutions, Inc.
 Select Pizza and Grill Smyrna
 Senior Home Help LLC
 September Tenth Films
 Service Unlimited, Inc.
 SERVPRO of Dover/Middletown
 Shay's Seafood & Soul
 Shay's Supreme Vending
 Sherry T. Wilkins
 Shore Smoke Seasonings, LLC
 Shore United Bank – Camden
 Shore United Bank – Dover
 Shortcutz Lawn & Landscape Co
 Representative Bryan W. Shupe
 ShureLine Electrical
 Silver Lining Home Healthcare
 Skocik's Discoveries and Collectables
 Sleep Inn and Suites
 Small Business Development Center
 Smith, Cohen & Rosenberg LLC
 Town of Smyrna
 Smyrna Nutrition
 Smyrna Opera House
 Smyrna School District
 Snow's Painting Service, LLC
 Sophisticated Scrubs LLC
 Southern Delaware Explorer Magazine
 Sovereign Beauty
 Spanglish Foods, Inc.
 Sparkle Pools Inc. – Dover
 Special Touch Card Creations
 Spence's Bazaar & Flea Market, Inc.
 Representative Jeffrey N. Spiegelman
 Splash! Designworks
 St. Andrew's LC Great Hall and Gathering Space
 Staples Copy & Print
 State Farm Insurance – Bennett Ins. Agency Inc.
 State Janitorial Supply Co.
 State Street Assisted Living
 Stephen R. Harrell Auctioneer, LLC
 Steppin' In Style
 Stick It! Gymnastics
 Stone Nation, Inc.
 SUMURI LLC
 Sunnyfield Contractors, Inc.
 Super Cichlids
 TAG Events
 Taking Healthy Back Together with Juice Plus+
 Tastee's Chicken and Seafood
 TAX-E LLC
 Taylor & Messick, Inc.
 TD Bank – Limestone

Teal Construction, Inc.
 Technical Broadcast Solutions, Inc.
 Techno Goober
 Telepathy Networks, LLC
 Texas Roadhouse
 The Brick-Wood Fired Eats
 The Catering Company
 The Center at Eden Hill
 The Elizabeth W. Murphey School, Inc.
 The Golden Fleece Tavern
 The Growth Coach of Northern Delaware
 The House of Coffi
 The Ice House: Wellness & Community
 The Kritter Sitter, LLC
 The Malmberg Firm, LLC
 The Moving Experience
 The Open Door
 The People's Platform
 The Rivera Group of Keller Williams Realty
 The Skyline Café
 The Terminix International Company LP
 The Wedding Boutique
 The Willis Group, LLC
 TidalHealth Lifeline
 Tidemark Construction
 Tidewater Utilities, Inc.
 TMP SERVICES, LLC
 Todd's Lawn Care Service
 Tomeka's Homestyle Eatery
 Tommy's Express
 Top Five BBQ
 Torbert Funeral Chapel
 Towles Electric Inc.
 Trader Funeral Home, Inc.
 Transamerica Agency Network
 Tre Sorelle Dolce Ice Cream & Mini Golf
 True Access Capital
 Two Men And A Truck
 Union Baptist Church, Inc
 UNITED Church
 United Healthcare
 United Way of Delaware
 University of Delaware
 USO Delaware
 Representative Jesse R. Vanderwende
 Vaughan
 MGeneral Frank Vavala
 Vepco Park, Inc.
 Law Office of Karen Y. Vicks, LLC
 Vincenzo's Pizzeria & Gelato
 Vision Quest Eye Care Center, Inc.
 Visions of Hope HM, Inc.
 W.D. Pressley, Inc.
 Wagamon Technology Group, LLC.
 Walmart DC 7034
 Waste Industries
 Wattay Accounting – Milford
 Wattay Accounting – Smyrna
 WBOC & FOX21
 Wealth Management Group, LLC
 Weiner Benefits Group
 Steve Welde
 Wesley College
 Wesley United Methodist Church
 Westminster Village
 Westover Companies – Lake Club Apts
 Westside Car Wash/Clean Car, Inc
 Westside Family Healthcare
 William V. Sipple & Son, Inc.
 William Vendetti, Retired
 Williams Insurance Agency Inc.
 Willis Chevrolet, Inc.
 Wilmington University
 Senator David L. Wilson
 Winter Wonderfest – Festival of Cheer
 Woody's on Wheels
 World Trade Center Delaware
 WSFS Bank – Camden Branch
 Xpress Computer Systems
 Yarn & Bone Pet Supply
 Yarn and Bone Pet Supply
 Representative Lyndon D. Yearick
 Yencer Builders, Inc.
 Yogi Bear's Jellystone Park at Delaware Beaches
 ZenBusiness



CDCC Milford Mixer a Joint Success!



The Central Delaware Chamber of Commerce (CDCC) is THE essential resource for the development of businesses in Central Delaware! Established in 1919 as the Dover Chamber of Commerce, the CDCC evolved over time with the merger of the Smyrna-Clayton Chamber of Commerce and more recently, a partnership with the City of Harrington Business Association. The CDCC has been proud to extend our reach to the Milford community for many years, and even prouder to collaborate with the awesome people from the Chamber of Commerce of Greater Milford for their next Sunset Business Mixer!

of guests like you who consistently take time out of your busy schedules to stay engaged with their local community. This joint Sunset Business Mixer reflected the unique unity of the Central Delaware community that is truly one of a kind. The CDCC was always so excited to facilitate interpersonal connections to build Central Delaware professionally and personally. Guests came equipped with plenty of business cards, smiles, and door prizes to surprise their fellow guests.



Thank you to all attendees, businesses, and partners for organizing a relaxing time of community-minded fun with individuals who share the same goal: to expand their businesses, while supporting Central Delaware together! This was the perfect way to directly connect with the community by fostering relationships to last a lifetime. The CDCC hopes everyone in attendance had a great time as they celebrated two incredible businesses and made new relationships with the Chamber of Commerce for Greater Milford.



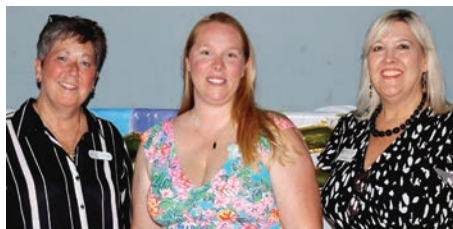
Guests of both chambers were found mixing and mingling together at Fur Baby Pet Resort located at 301 NE Front Street in Milford and neighboring restaurant, Benvenuto, on the evening of June 29 for the CDCC's monthly Sunset Business Mixer!

For more information about upcoming Sunset Business Mixers from the CDCC team, please contact the CDCC office at (302) 734-7513 or visit our website at www.cdcc.net. If you are interested in hosting a Sunset Business Mixer, give the Chamber a call. See you next month at Central Delaware Habitat for Humanity ReStore Center in Dover on the last Wednesday of the month!



The evening's festivities began at Fur Baby Pet Resort, Milford's No. 1 pet boutique, daycare, hotel and spa, which has been servicing Delaware since 2011. The gracious staff at Benvenuto celebrated with a ribbon cutting and then served delicious food and drinks in a gorgeous, inviting Tuscan atmosphere.

Thank you to all the CDCC and Chamber of Commerce for Greater Milford members for making this event such a success! This is the premiere networking event of the CDCC because





The Employer Support of the Guard and Reserve (ESGR) recognized the efforts of the CDCC in supporting DAFB at their 50th Recognition Banquet. Thank you, ESGR!



Friday, July 22, 2022
10 AM - 4 PM
FREE Admission
 Noble's Pond Clubhouse, "The Point"
 13 Noble's Pond Crossing, Dover



The day will include:

- Vendors ★ Door prizes ★ Giveaways ★ Food Trucks**
- Demonstrations ★ Interactive activities**
- On-site house tours of the Noble's Pond A 55+ Lifestyle Community**

Presented by:

Event Partner:

Sponsored by:



For more information on the event or how to become a sponsor or vendor contact us today!
302-741-8200 ★ adsupport@iniusa.org

The *Diamond* Authorities

Custom jewelry designed and manufactured on the premises

Sayers

Jewelers & Gemologist
 Since 1950

19 South Main St. Smyrna, DE • 302-653-9456
 The area's most complete and trusted jewelers for over 70 years

CDCC joins SUMURI, LLC for a Ribbon Cutting

The Central Delaware Chamber of Commerce hosted a Ribbon Cutting Ceremony for SUMURI, LLC on May 31. Chamber staff joined the team at SUMURI (at 40 South Main Street in Magnolia) to celebrate their new location, renovation, and preservation of a piece of Delaware history – the John B. Lindale Peach Farm!

SURMURI was founded by Ailyn Whalen and her husband in July of 2010 and has grown into a world-renowned company that has developed innovative solutions for digital forensic software, hardware, training and services. Ailyn is from the Philippines, where the company has strong ties, and became a U.S. citizen in 2016. Both Ailyn and her husband, Steve Whalen, who has grown up in Delaware, now live in Central Delaware because it is a great location to service their clients in the surrounding Mid-Atlantic region.

This company is known as a worldwide leader in Macintosh, Windows and mobile forensics. Their team of

certified Computer Forensic Examiners have a vast amount of experience in imaging, analysis, and reporting. SUMURI offers express and full forensic operations to cater to the needs of their trusted clients. Whether you or your company needs a full or partial forensics solution, SUMURI can provide a cost-effective, professional and high-quality investigation of your computer data systems and walk you through every step of the process to keep you safe, secure and protected.

The company covers all stages of computer design software, hardware, training and service support to assist law enforcement officials, governments and corporate agencies across the globe, including building custom workstations catered to the needs of each client.

The mission of SUMURI, LLC is “to provide the forensic community with unique and relevant digital forensics solutions while adhering to our core values of honor, integrity, loyalty,



positive attitude, dedication and, most important above all: altruism.”

SUMURI, LLC is proud to celebrate their new location in Magnolia, Del., which is now preserving a historic piece of property, the John B. Lindale Peach Farm. The company is also proud to give back to those in need. SUMURI leaders also look for talent in their local community. The majority of their employees are Delawareans, and some of them have joined their team after serving as an intern from lo-

cal colleges and schools. They regularly participate in local community events and support law enforcement agencies worldwide.

To learn more about SUMURI, LLC, visit them online at www.sumuri.com call them at (302)570-0015, or email hello@sumuri.com. Please join the Central Delaware Chamber of Commerce in congratulating owners Ailyn and Steve Whalen and their team at SUMURI, LLC on their new location and renovation!

CDCC joins Tommy's Express Car Wash for a Ribbon Cutting

The Central Delaware Chamber of Commerce hosted a Ribbon Cutting Ceremony for Tommy's Express Car Wash on June 3. Chamber members and friends joined the team at Tommy's Express to celebrate their Grand Opening at 656 N. DuPont Highway in Dover!

Tommy's Express Car Wash is now finally open to serve the Dover and extended Delaware community here at their new Dover location. It was a long journey that began in the summer of 2018 that led to Tommy's Express Car Wash to open their doors to locals on May 1, 2022. Tommy's offers quick car washing services in a modern facility to deliver a professional clean to all customers and their vehicles. Tommy's has multiple car wash packages to suit the needs of any customer, such as Quality, Super, Ultimate, and the Works. There are 16 free vacuums to choose from, each with a vending machine for the option of purchasing a Detailing Kit. Customers will find two car mat washers that are free to use to their delight as well.

Additionally, Tommy's Express Car Wash offers the TommyClub – a mobile app that allows customers to

manage their cars, wash plans, payment preferences and sign up for deals and discounts. TommyClub customers can choose between Unlimited (membership) and Pay Per Wash, in which customers use a dedicated automated check-in lane for no-hassle washing!

Tommy's Express Car Wash is excited and ready to serve the Central Delaware community because of the wonderful sense of community here. Owner Amandeep Ghariyal, noticed the “need for a fun, express car wash experience that allows residents to actually enjoy washing their cars,” which led to the location now being open in the Central Delaware area!

Tommy's Express Car Wash is excited to continue to give back to their community by using advanced water reclamation technology to safely clean vehicles using less than 30 gallons of fresh water per car. For every car washed, Tommy's Express contributes a donation to Water Mission. Since 2001, Water Mission has provided safe water for more than 3.2 million individuals in vulnerable communities around the world.

The team at Tommy's Express Car Wash have plans to work with Dover's



first responders (police, fire, and EMT) regularly to assist with their fundraising efforts and continue offering a 15 percent discount on their Works Wash (the very best wash package) to active-duty military, veterans, and first responders!

Tommy's Express Car Wash also honored the historical landmark sign of the late Kirby & Holloway Family Restaurant, which was closed and demolished after a devastating fire. Ghariyal's team have paid homage to the iconic restaurant by repurposing

the original sign seen from the highway and by installing a beautiful mural inside the wash tunnel. Locals will take great delight in this preservation.

To learn more about Tommy's Express Car Wash, visit them online at www.tommys-express.com or call at (732) 718-9812, or visit [facebook.com/TommysExpressDupontHwyDover](https://www.facebook.com/TommysExpressDupontHwyDover) for updates. Please join the Central Delaware Chamber of Commerce in congratulating Tommy's Express Car Wash on the Grand Opening of their new Dover location!

CDCC joins First Command Financial Services, Inc. for a Ribbon Cutting

The Central Delaware Chamber of Commerce hosted a ribbon cutting ceremony for First Command Financial Services, Inc. on June 24. Chamber members and friends joined the team at First Command Financial Services, Inc. to celebrate their new permanent location at 4608 S. DuPont Highway in Dover!

First Command's Dover branch is here to help you put your plans in motion by assisting you to reach financial freedom. First Command offers budget planning, debt consolidation, banking, investments (retirement, non-qualified accounts, 401K assistance, college accounts), life insurance, long term care and estate planning.

The mission of the financial advisors at First Command is to coach those serve in their pursuit of financial security. First Command helps families strive for financial independence.

Many of the wonderful financial advisors at First Command are veterans or military spouses, therefore they are fully equipped to understand the lifestyle and financial planning needs of other military personnel and their families. First Command locations aim to service locally, remaining near major military installations to bring their expertise to military servicemen and women directly.

The financial experts at First Command want the community to know that they are a complimentary service without an investment minimum to start with them. The financial advisors at First Command are willing to help anyone that is in need.

First Command is proud to continue to give back to the local Central Delaware community by offering pro-bono work for clients. First Command is eager to continue emphasizing their



services to military personnel to support their local community.

To learn more about First Command Financial Services Inc., visit www.first-command.com or call (302) 736-0452.

Stop by their new office located at 4608 S. DuPont Highway in Dover. Please join the Central Delaware Chamber of Commerce in congratulating First Command Financial Services Inc., on their new permanent location!

CDCC joins Benvenuto Restaurant for a Ribbon Cutting

The Central Delaware Chamber of Commerce hosted a ribbon cutting ceremony for the Benvenuto Restaurant on June 29. Chamber members and friends joined owners Poncho and Lisa Johnson and their team to celebrate at 249 NE Front Street in Milford.

Benvenuto is a Tuscan-inspired restaurant located in Milford, Del. While the restaurant has only been open a short time, its story began with seeds that were planted in the 1950s when a young military man and his wife were stationed in Livorno, Italy, for 11 months. A friendship that began all those years ago, now in its fourth generation, inspired by a long legacy that led to the creation of this beautiful and inviting restaurant.

Benvenuto offers an authentic Tuscan menu with a variety of offerings. From salads to appetizers to seafood to chicken, pork and beef, Benvenuto's chef-inspired choices promise to be memorable and delectable. Everything at Benvenuto is homemade and fresh, as is the Tuscan tradition, by Chef Jesus Gordiany. Designed to be a Tuscan food destination that draws people

in and makes them want to return again and again, Benvenuto's décor is designed to replicate four Tuscan villages. Benvenuto also features wines from the best wineries in Tuscany and Italy. The team there is pleased to offer Montepulciano as a house red and Peroni on tap.

Originally from Puerto Rico, Chef Jesus Gordiany grew up watching his mother cook. This experience ignited a passion in him to create fine dishes, often harkening back to his family's Puerto Rican and Sicilian favorites. As early as age 14, Chef enjoyed working in a variety of well-established, wonderful restaurants. He eventually attended The Restaurant School at Walnut Hill in Philadelphia. Over the years, he has developed a wonderful and rich culinary portfolio. He is excited to bring these flavors to Benvenuto!

Benvenuto is a proud member of the Central Delaware community. They place a high priority on engaging with the community and finding ways to give back. The team engages in a great deal of community service with a special emphasis on supporting local law enforcement. They sponsor an annual



Christmas Toy Drive and stand ready to initiate fundraisers to assist the families of insured and fallen officers. The team at Benvenuto is happy to join the residents of the Milford community in providing this kind of support. Chef Gordiany succinctly verbalizes the feeling of the restaurant's team when he says, "Without our community, we're

nothing."

To learn more about Benvenuto, feel free to visit them on the web at www.benvenuto-restaurant.com, or call (302) 265-2652. Please join the Central Delaware Chamber of Commerce in congratulating the folks at Benvenuto on being open to the public to serve their community!

New Member Spotlight

Introducing Stone Nation Granite & Marble!



One of the most used items in almost any kitchen is the countertop. Your kitchen countertop holds a lot of weight and responsibility, literally and figuratively, in your home or office. One could argue that countertops are used more than all other kitchen appliances combined. Utilized and visible 24/7, a beautiful, high-quality countertop is an investment to last a lifetime. Look no further than the

woman-owned and family-operated business, Stone Nation Granite & Marble, to make the show-stopping centerpiece of your dreams!

In Milford, Stone Nation Granite & Marble is owned and operated by the dynamic husband and wife duo, Frederick Fernando and Biriviana De Leon. Stone Nation was established with one goal in mind: “to provide high quality, granite countertops to all its customers



while covering the entire Delmarva Peninsula with the beauty and durability of natural and man-made stone.”

Fernando has honed his chosen masonry profession through over 15 years of experience in Texas and California. Upon moving to Delaware in 2008, Fernando “worked his way to his former foreman position at a local granite and marble company prior to venturing out on his own” and founded Stone Nation.

“This is my passion, I love what I do, at the end [of a project] I feel accomplished when I see the beautiful countertop installed and to know that I created that beauty, pleases me,” said Fernando, a passionate professional who knows his craft.

Both from Guatemala, Fernando and Biriviana make an excellent team of knowledgeable professionals who treat their customers like family. Biriviana has over 10 years of customer service experience, in addition to a background in banking. Customers are sometimes surprised to see her driving the forklift when needed, but as mentioned, Stone Nation Granite & Marble is very much a local, family-oriented business, who works together. The pair have three awesome children together who reside in Milton. Biriviana’s brother is in charge of templating and verifying measurements for customers to ensure accuracy of all their products, while her

sister assists with sales part time. When clients are introduced to the family operation at Stone Nation, they are considered family too!

The team at Stone Nation Granite & Marble is happy to walk customers through the entire process from initial consultation, templating, fabricating, installation, and follow up, to create the countertop of your dreams! Stone Nation offers a wide variety of granite, marble, quartz, and quartzite slabs to choose from – check out their beautiful showroom to be awe-inspired! Stone Nation Granite & Marble is located at 30 SW Front Street in Milford, Delaware.

The team at Stone Nation welcomed the Central Delaware community into their facility in May as they did an incredible service hosting the CDCC’s May Sunset Business Mixer! Guests showed support as they celebrated the company’s Ribbon Cutting for their new expansion and CNC machine, which allows them to cater to the desires of their clients more efficiently, to create exquisite countertops

For more information about Stone Nation Granite & Marble, visit stonenationde.com or call (302) 725-5251. Please join the Central Delaware Chamber of Commerce in welcoming Fernando & Biriviana De Leon and their family team into membership!

Good morning!

Start your day with the

Delaware State News daily newsletter:

Daybreak.



Sign up for FREE:

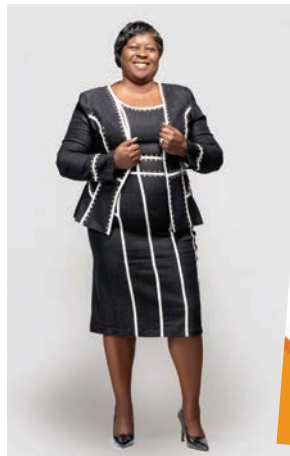
BaytoBayNews.com/newsletters

DELAWARE STATE NEWS

The Capital Daily

New Member Spotlight

Introducing Linda Farrow and Visions of Hope HM, Inc.!



Visions Of Hope HM, Inc.
Your Key to a brighter future

Children are the future of the world as we know it, so it is crucial that adults supply them with the necessary tools to lead a safe, happy and healthy life. Visions of Hope HM Inc. is a 501(c)(3) nonprofit organization serving the Central Delaware area and making a difference in the lives of children in the foster care system.

Visions of Hope HM's purpose is to assist youth in foster care in receiving long-term housing options. The goal is to provide stable living environments to foster children who are hard to place due to age and/or behavioral/emotional health issues.

Linda Farrow is the founding CEO of Visions of Hope HM. Farrow has an extensive professional background in caring for others. She will use her lifelong skills from working for the Department of Prevention & Behavioral Health, Division of Family Services, the Division of Social Services and now the Delaware State Housing Authority to continue her passion of helping those in need. Her work at Visions of Hope HM allows Farrow to share her encouragement, faith and resources to better the lives of future generations.

Farrow works from the heart in all she does. She empathizes with the youth she works with every day because she understands overcoming life's many different obstacles firsthand. Family is a top priority of Farrow of which she couldn't be prouder. She answers to "Mom," "Mom-Mom" and "Aunt Linda" to many.

Farrow has recently returned to school and earned her bachelor's degree in Behavioral Science and is also a Licensed Bachelor Social Worker. Farrow owns and operates a Janitorial Service business alongside her family, under which she has obtained the Minority Business Enterprise and Women Business Enterprise certifications. With all of her amazing accomplishments, including Visions of Hope HM, her most rewarding work is as a foster parent and Certified Nursing Assistant. Farrow is a woman proudly fueled by her faith in God because of the amazing people he has placed in her life.

Visions of Hope HM is spreading its vision of hope to youth in need right here in Central Delaware. Visions of Hope joined the Central Delaware Chamber of Commerce because of its extensive benefits. She attended an orientation and joined that same day because of the support and connections that the Chamber shared. This nonprofit is excited to expand their network to increase their reach, the children they can serve, and give back to their local community. Visions of Hope is currently looking for a new location.

For more information about Visions of Hope HM, Inc. Please do not hesitate to visit their website at visionsofshopehm.org or give them a call at (302) 608-4448. Please join the Central Delaware Chamber of Commerce in welcoming Visions of Hope HM into membership!

Interested in sharing your message with people who attend local, family-friendly community events all summer long?



We can help you with that!

We publish these event programs:

- Delaware State Fair
- Ladybug Music Festival
- Harrington Heritage Day
- National Hard Crab Derby
- Riverwalk Freedom Festival

and more!

Plus, our Bay to the Beach quarterly publication reaches more than 100,000 readers on Delmarva.

We'd love to tell you more about this.



DELAWARE STATE NEWS

The Capital Daily

CONTACT US TODAY!

302-741-8200 or adsupport@iniusa.org

Member of the Month



NAME: Jennifer Jurczak

TITLE: Business Service Representative

HOURS: 8 a.m. - 4:30 p.m. MON - FRI

WEBSITE: Joblink.Delaware.gov

BUSINESS: Department of Labor

PHONE: (302) 857-5862 office
(302) 423-3693 cell

EMAIL: Jennifer.Jurczak@delaware.gov

ADDRESS: 655 S. Bay Rd. Ste 2H
Dover, DE 19901

Tell us a little about your business/organization: how did it begin, what are your services/products, etc.

The mission of the Delaware Department of Labor (DOL), Division of Employment & Training is “to provide services enabling employers and job seekers to make informed employment and training choices leading to employment.”

The Division of Employment & Training (DET) operates a free statewide labor exchange system serving both employers and job seekers:

- A free online job order system to post positions and search resumes from a broad cross-section of job seekers from all occupational categories at all skill and experience levels to find your next employee.
- Applicant screening of the resumes and cover letters allows you to receive only qualified applicants that match your specific hiring criteria, saving you lots of time.
- Setting up no-cost Job Fairs (single company or multi-employer) for the benefit of employers and job seekers.
- Conduct resume searches for you for all positions that we post on the Job Link internet site.
- Send your position information via e-mail to many Delaware locations such as the Dover Air Force Base, public libraries, throughout State offices and our larger network to advertise your employment opportunities.

Our division has an array of programs to assist the employer and job seeker. To learn more, go to <https://labor.delaware.gov/divisions/employment-training>.

Tell us about your role in the business/organization.

I help businesses with their workforce needs such as posting jobs, candidate screening and referrals, marketing positions, etc. The assistance I provide also

includes the coordination of job fairs, providing relevant resources from other areas and programs offered, marketplace information to gauge if their wages are competitive and assistance with setting up interviews as needed. We are your one-stop recruitment shop!

Tell us something that makes your business/organization unique.

Our free “Delaware JobLink” online system is unlike other employment sites. Companies and organizations can create accounts and access features at no cost. Delaware JobLink services both for-profit and non-profit organizations. Its users can advertise open positions and search resumes. Military veterans, their spouses and other covered persons also enjoy the advantage of having access to all advertised employment opportunities 24 hours before they are made available for public view.

How has the Chamber helped your business/organization grow?

Networking opportunities with great chamber members to distribute our information is very valuable. It has been a wonderful resource over the years, and “Coffee Coaching,” has offered valuable training.

What is your best advice to other businesses/organizations?

Training is key. In this economy, finding that ideally qualified applicant is difficult. In these scenarios, please consider additional training for someone who has a great work ethic, and transferable skills. Professional development of a candidate can create an employee that is an incredible asset to your company. Supported employees tend to stay with your company and rise to be super stars.

Reach out to the Department of Labor to tell us about your employment and training needs. We may have a program that can help. Or your specific needs could possibly spark the idea for the creation of the next employer focused program, or employee training service!

Ambassador's Corner

The CDCC Ambassadors



An ambassador by definition is an official representative, liaison, spokesperson, emissary or envoy. In other words, an ambassador serves as the hands and feet of a particular entity. Ambassadors of the Central Delaware Chamber of Commerce do exactly that ... and much more!

Our Ambassadors are the official representatives of the Chamber. They assist members of the community in understanding who we are and what we have to offer. To put it simply, they

carry our message with them wherever they go! The work of the Ambassadors promotes the growth of the Chamber.

CDCC Ambassadors also serve a critical role as they provide mentoring to new members of the CDCC. They help the CDCC's newest members as they assist them in meeting other members and generally help them feel comfortable as they explore the many benefits of Chamber membership. In addition, CDCC Ambassadors serve as a liaison for current members, often answering questions and clarifying details. They help members remain engaged!

The CDCC is always looking for additional volunteers to serve as

Ambassadors. To be qualified to serve, individuals must be business members in good standing with the Chamber for at least one full year and must successfully complete the Ambassador Orientation.

The Chamber and its members place a high value on the work of the Ambassadors. There are also many benefits to those who serve as Ambassadors. Serving as an Ambassador allows members to expand their business networks with like-minded professional and potential customers. Service in this way increases one's visibility and gives opportunities for a greater presence in the community. Ambassadors often speak about the great satisfaction they

experience as they help new members reach 5-Star status. In short, serving as a CDCC Ambassador increases every possible business opportunity for personal and professional development because of the relationships created.

We would like to thank all those who have served as CDCC Ambassadors over the years. You have done a wonderful job of helping our members, regardless of their tenure to remain engaged and connected to us and to other business members.

Anyone interested in serving as an ambassador should call the CDCC Office at (302) 734-7513 and speak with Dina.

Thank You for Your Renewal!

RENEWALS FOR MAY

NAME of COMPANY	# of YEARS	NAME of COMPANY	# of YEARS
Harrington Realty, Inc.	46	Mission BBQ	6
Highmark Blue Cross		Walmart DC 7034	6
Blue Shield Delaware	43	Moore Seal, Inc.	4
Roma Italian Restaurant	42	Waste Industries	4
Forever Media, Inc.	28	Cancer Support	
Johnny Janosik, Inc.	26	Community Delaware	3
The Delaware State Fair, Inc.	24	Meals On Wheels Delaware	3
John H. Brothers	17	The Ice House:	
Correctional Officers Assoc. of Delaware	17	Wellness & Community	3
Brooks Machines	16	Barzey Enterprise LLC	1
First State Heritage Park	16	DelMarVa SHRM	1
Jeweler's Loupe	13	DiBioso's Cleaning	
Jim Flood Sr.	13	& Restoration Services Inc.	2
Black Diamond		Green Clinics Laboratory	2
Financial Solutions, Inc.	12	G's Down Too Earth	
Greater Kent Committee	12	Landscaping	2
Positive Outcomes		Lean On Me Caregiving, LLC	2
Charter School	11	Lisa Pearson, Realtor	
PPG Paints	8	- Diamond State Realty	2
Excel Business Systems	8	Service Energy/Poore's Propane	2
Office Pride Commercial		Smith, Cohen & Rosenberg LLC	2
Cleaning Services	8	Vendetti	2
Williams Insurance Agency Inc.	7	bombshell hair studio Inc.	1
Encompass Health Rehabilitation		CertaPro Painters of Delaware	1
Hospital of Middletown	6	Delaware Submarine	
Holiday Inn Express		Association Inc.	1
- Harrington	6	Diamond State Pole Buildings	1

New Members

Allstate-LaToya Johns Agency

Ms. LaToya Johns
42 Heritage Drive
Dover, DE 19904
(302) 423-2576

Atlantic Apothecary, Inc.

Mr. Kevin Musto
103 S. DuPont Blvd., Suite 2
Smyrna, DE 19977
(302) 653-9355

Be Well Massage and Skin Care

Ms. Kimberly Stockslager
1147 S. Governors Ave
Dover, DE 19904
(302) 883-3066

First State Educate

Sadé Truiett
Dover, DE 19901
(302) 465-6477

Good News Natural Foods

Mr. Sam Mansoor
739 South Governors Ave.
Dover, DE 19904
(302) 730-1910

Mark Group Companies LLC

Dr. Esosa Iriowen
PO Box 288
Dover, DE 19903
(302) 252-5626

Merle Norman Cosmetics Studio

Ms. Stephanie Lehane
1030 Forrest Ave Ste 113
Dover, DE 19904
(302) 736-1961

Coffee On Us!

SPONSORED BY

The House of Coffi

The Central Delaware Chamber of Commerce would love to connect you with something delicious! The photograph on our front pageheader changes each month, depicting picturesque and unique locations right here in Central Delaware. These photos are the subject of our monthly "Coffee On Us" contest.

If you recognize the location of the header picture on our front page, be the **THIRD PERSON** to CALL the CDCC Office (302-734-7513) with the correct answer and you will win a \$10 gift card to:



You'll also see your picture and your company name on our Facebook page - and, of course, you'll win bragging rights for the month!

The winner of the June "Coffee On Us" Contest was **Mr. Bill Vendetti**, retired, who correctly identified The Flightline at Dover Air Force Base for the 2022 Thunder Over Dover Air Show. **Congratulations, Mr. Vendetti** - and thank you for playing our game!

Please note that the same person is qualified to win the Coffee on Us Contest only twice per calendar year.



BUSINESS CARD BULLETING BOARD

Add your business card to the bulleting board!
 (302) 741-8297
 bmankin@iniusa.org

PRESSURE WASHING
 Pruning • Lawn Care • Mulching
 Tree Work • Free Estimates



Office: 302-751-1109
 Cell: 267-262-3064
 Email: aaaandscape@yahoo.com
 Licensed and Insured

A new Foray into outdoor living

Trees Trimmed
 Tree Removal
 Tree Shaping
 Stump Removal

24 Hours Storm Service

Licensed & Insured
 Follow Us on Facebook @DelmarvaTree

DELMARVA TREE



(302) 659-3345
 delmarvatree.com | delmarvatree@aol.com

3 Generations || 30 Years of Experience
 Family Owned & Operated || Serving all of Delaware



For over 100 years, Torbert Funeral Chapels has made community service, professional integrity and high ethical standards a tradition.

TORBERT FUNERAL CHAPELS

Bradford & Reed Street and 1145 E. Lebanon Road • Dover
 torbertfuneral.com • 302-734-3341

SECURITY INSTRUMENT CORP. Since 1960



RESIDENTIAL & COMMERCIAL

- SECURITY SYSTEMS
- DIGITAL VIDEO RECORDING
- CLOSED CIRCUIT VIDEO
- ACCESS CONTROL
- SYSTEM INTEGRATION
- FIRE ALARMS
- LAN & INTERNET SOLUTIONS
- SPRINKLER SUPERVISION

24 Hour Monitoring
 Listed
 FM Approved
 Central Station

Traditional Quality • Advanced Technology
LEWES 645-2212 DOVER 674-2261

mountain consulting 302.744.9875
 mountainconsulting.net

Professional & Technical Services:
 Construction • Construction Management • Civil Engineering • Civil Site Design
 Stormwater Management Design • Erosion & Sediment Control Plans
 Project Management & Oversight • CADD Design • Utility Plans • Electrical Services

Land Survey Services:
 ALTA Surveys • Residential Surveys • Construction Stakeout • As-Builts • Survey Control
 Flood Elevation Certificates • Topographic Survey & Mapping • Aerial Target Control

Woman Owned, 8(a) & HUBZone Certified

Frederica
 Pizza & Pasta House

A Randazzo Family Restaurant...
 "Continuing the Tradition"

Pizza • Pasta Entrees • Subs • Wings & More!

Open 6 Days A Week • Mon thru Sat 10:30 AM - 10:00 PM

1491 Frederica Rd. • Frederica
 For Speedy Pick Up, Call: 302.335.1222

CLEAN SWEEP CUSTODIAL SERVICES

Call Alvin Today!
 302-650-2755

Now Serving:
 • Kent County
 • Sussex County
 • New Castle County

YOUR PRO SPECIALIST FOR:
 Commercial Business • Industrial Business
 On-Site Training Services

PO Box 10404 • Wilmington, DE 19850
 Cleansweepalvin@gmail.com

Care. Comfort. Compassion.

Senior Helpers offers personalized in-home care, professional caregivers and peace of mind for your family. All at a moment's notice.

(302) 674-2234
 seniorhelpers.com



Senior Helpers

All rights reserved. Senior Helpers locations are independently owned and operated. © 2022 SH Franchising, LLC.

Carole A. Kisner
 REALTOR® ABR, CRS, GRI

direct: (302)363-3948
 Office: (302)677-0020
 Carole@AskCaroleKisner.com



kw CENTRAL DELAWARE
 KELLERWILLIAMS

1671 S. State St., Dover
 302-677-0020

Each office independently owned and operated.

Thomas Accounting Services

FULL-SERVICE ACCOUNTING
 Tax preparation • IRS Resolutions • Estates and Trusts

David L. Thomas
 Licensed Public Accountant

52 East Mount Vernon Street, Smyrna, DE 19977

By Appointment Only **302-423-2460**
 davidthomas1@aol.com



Need a Venue?

The hall will be available for our families to utilize for meal time post-funeral receptions with catering services. The Faries Reception Hall is also available for private booking.

29 S. Main St • Smyrna
 (302) 653-8816
 fariesfuneralhomes.com

FARIES
 Funeral Directors and Crematorium, Inc.

Established 1831 • Delaware's Oldest Funeral Establishment

ALL PRIVATE ROOMS



PAM Rehabilitation HOSPITAL OF DOVER
 A Post Acute Medical Hospital
 Corporate: 717.731.9660
 www.postacutemedical.com

302 672 5800

- We offer outpatient rehabilitation
- You can choose the highest level of rehabilitative care
- Acute Rehabilitation maximizes recovery, health, and function
- Studies show that patients treated in acute rehab hospitals have better outcomes, go home earlier, and are less likely to be readmitted to the hospital

CHARLIE'S Home Improvements

HANDYMAN SERVICES

Specializing in Bathroom Remodeling and Hot Water Heater Replacement

ALL HOME REPAIRS

WINDOWS AND FLOOR WORK
 SENIOR DISCOUNTS • 40 YEARS EXPERIENCE

Call Phone **302-382-7096** Home Phone **302-335-1123**



We are YOUR Chamber