

# Chamber Connections

Vol. 48 // No. 1

[cdcc.net](http://cdcc.net)

January 2025

## CORNERSTONE MEMBERS



**Chesapeake Utilities**

PAGE 3



**Daily State News**

PAGE 3



**G. Fedale**

PAGE 4

## IN THIS ISSUE...

**Wreaths Across America**

PAGE 8

**Fire & Ice Festival**

PAGE 9

**CDCC Holiday Party**

PAGE 13

## The CDCC Presents the Annual Economic Forecast Breakfast

As business leaders know, there are many details involved in owning and operating a business! Plus, there are multiple facets to creating a solid business model, not the least of which is the development of a strong financial plan. Planning for the financial well-being of our community's businesses depends on several variables: current trends, an accurate analysis of the market, the rate of inflation, the effect of the gross domestic product, supply and



demand, and the unemployment rate – just to name a few! All too often, our local business owners do not have the time, the vocabulary, or the expertise to delve into these matters before their budgets are due and their fiscal predic-

tions are expected. Having someone to help with those predictions and with translating the facts into laymen's terms would be a great help to the leaders of our business community.

As THE essential resource for the development of businesses in Central Delaware, the Central Delaware Chamber of Commerce is here to help! The CDCC's annual Economic Forecast Breakfast, sponsored by

Continued on Page 11

## Home & Garden Expo: A Great Place to Grow Your Business!



The Central Delaware Chamber of Commerce is excited to present our Annual Home & Garden Expo for 2025! This show, a two-day expo-style event, will be held on Friday, February 28th, and Saturday, March 1st, at Dover Motor Speedway's infield in the NASCAR Cup Garage. This exciting venue inside the track will provide the perfect spot for the area's home and garden experts to help guests turn their living-space dreams into a reality!

If you are a home and garden business, imagine what an amazing opportunity this will be to share the good news about your business' products and services. Instead of spending your time, energy, and money trying to reach the masses of people who are dispersed around our area, we'll bring the customers directly to our Expo's setting right in the center of Kent County. This is an extremely efficient

Continued on Page 12

## The CDCC's January Triple Play Event!

On Wednesday, January 29, 2025, Central Delaware Chamber of Commerce members and guests are invited to an evening offering three events all wrapped up into one. This amazing networking event, which will be held at the Delaware Agricultural Museum, 866 N. DuPont Highway in Dover, will feature the CDCC January Sunset Business Mixer, the annual CDCC Showcase, and a Member 2



Member Expo. This is an evening you won't want to miss!

Mixers are a great opportunity for CDCC members and their guests to meet other business owners and

collect qualified leads in a casual setting. Complimentary refreshments will be provided. Don't forget your business cards – you can share them with other attendees and enter the business card drawing to be the next CDCC Member of the Month or win door prizes! Mixers help our area's businesses to stay connected.

Continued on Page 12

# Dina's Digest



PRESIDENT  
Dina Vendetti

## Calendar of Events

### JANUARY

- January 1st - 5th**  
New Year's Holiday  
Office Closed

---

- Wednesday, January 8th**  
Marketing Committee Meeting  
2:30pm, CDCC Conference Room

---

- Thursday, January 9th**  
Leadership Central Delaware  
8:00am - 5:00pm,  
Media & Communications Day

---

- Thursday, January 9th**  
Member Orientation  
12:00pm - 1:30pm, via Zoom

---

- Tuesday, January 14th**  
CDCC Board Meeting  
7:30am - 8:30am, Faw Casson

---

- Thursday, January 16th**  
Economic Forecast Breakfast  
7:30am - 9:30am, Looking Glass - Polytech

---

- Monday, January 20th**  
Martin Luther King, Jr. Day Office Closed

---

- Tuesday, January 21st**  
LCD Steering Committee Meeting  
12:00pm - 1:00pm, CDCC Conference Room

---

- Thursday, January 23rd**  
Capital Briefing Reception  
5:00pm - 7:00pm, Roma Italian Restaurant

---

- Wednesday, January 29th**  
Ambassador Committee Meeting  
3:30pm, Delaware Agricultural Museum

---

- Wednesday, January 29th**  
Sunset Business Mixer / Member 2 Member  
Expo / CDCC Showcase 4:00pm - 7:00pm,  
Delaware Agricultural Museum

### FEBRUARY

- Thursday, February 6th**  
Leadership Central Delaware  
8:00am - 5:00pm, Government  
and Politics Day

---

- Thursday, February 6th**  
Kent County Open for Business  
8:30am - 10:00am, Kent County Levy Court

---

- Tuesday, February 11th**  
CDCC Board Meeting  
7:30am - 8:30am, Faw Casson

---

- Wednesday, February 12th**  
Coffee Coaching  
8:00am - 9:00am, via Zoom

---

- Thursday, February 13th**  
Member Orientation  
8:30pm - 10:00pm, via Zoom

---

- Monday, February 17th**  
Presidents' Day Office Closed

---

- Tuesday, February 18th**  
LCD Steering Committee Meeting  
12:00pm - 1:00pm,  
CDCC Conference Room

---

- Wednesday, February 26th**  
Ambassador Committee Meeting  
4:30pm, Harvest Ridge Winery

---

- Wednesday, February 26th**  
Sunset Business Mixer  
5:00pm - 7:00pm, Harvest Ridge Winery

---

- February 28th and March 1st**  
Home & Garden Expo  
Feb 28th - 12:00pm - 6:00pm; March 1st  
- 9:00am - 3:00pm, Dover Motor Speedway

## Changing the Calendar – Maintaining the Vision!

As the calendar changes, the holiday season spins to its end, and we find ourselves once again packing away decorations, putting away gifts from loved ones, and anticipating a fresh start, we stand together at the beginning of a whole new year. 2025 stands before us like one more unwrapped gift!

On the brink of this brand-new year, your Central Delaware Chamber of Commerce, your essential resource for the development of businesses in Central Delaware, is excited to unwrap the gift of this new year with each of you. We are excited for all that this new year promises and we anticipate a multitude of opportunities for connections, growth, and success!

As we make plans for events and activities for 2025, we are exploring ways to maintain the high quality of our programs, and yet refresh our activities. While we work to change some of the "packaging" on our most popular events, the constant goal is always to offer you, our members, as many opportunities as possible to meet people and gain qualified leads, new skills, pertinent information, and build relationships. In other words, we want you to have all the tools you need to move your business forward as we walk together into this year.

On January 16th, brought to you by BIG Investment Services, we are excited to bring you our 11th Annual Economic Forecast Breakfast. This year's event will be held at Polytech in Woodside, in the Looking Glass. During this informational event we will hear from experts in the field regarding the health of the economy from the 10,000-foot national view all the way down to what we can expect to see here in Kent County. David Boothe of BIG Investment Services will share his perspective on the national economy, and Linda Parkowski of the Kent Economic Partnership will shed light on what is happening locally and share exciting plans for growth in Kent County.

On January 29th, from 4 – 7 pm, we will be holding a CDCC Trifecta: Sunset Business Mixer, Member 2 Member Expo, and CDCC Showcase Event at the Delaware Agriculture Museum. This will be a great time to make connections, learn about member businesses, and invite prospective members to come and learn more about the CDCC!

On February 28th & March 1st, we will be holding our annual Home & Garden Show right here in Dover, the center of Kent County, at Dover Motor Speedway in the NASCAR Cup Garage in the track's infield! This expo-style event will feature everything you need in the way of improving and refreshing your living space – both inside and out. Watch for more details to come and plan to join us. If you are a business that offers anything in the category of home and/or garden products and services, consider joining us as a vendor!

2025 will bring many political changes to both our nation and our state, so our Legislative Affairs committee will be working diligently to bring you all the information you need to be able to navigate these changes and stay connected with your public servants at Delaware's General Assembly. As always, we will continue to monitor and influence what's happening at Legislative Hall during the session and do our best to help our lawmakers craft business-friendly legislation. Stay tuned for important legislative notifications – there may be times when we need you to help us, so follow our publications and respond quickly when you are able!

The new year promises to bring a multitude of events, activities, and learning opportunities – stay tuned to our publications for all the latest. The time has come to tear off the wrappings of this gift called "2025!" Let's approach it with hope and confidence in all that this year promises. We are honored to walk alongside you as, together, we enter this new year. Happy New Year!

### AN INDUSTRY EXCLUSIVE CDCC MARKETING PACKAGE!



Thank you to the CDCC Cornerstone Members!



435 N. DuPont Highway, Dover, DE 19901  
302.734.7515 info@cdcc.net

[www.cdcc.net](http://www.cdcc.net)

The CDCC is THE essential resource for the development of business in Central Delaware.

Published monthly by the Central Delaware Chamber of Commerce, the first accredited Chamber of Commerce in Delaware. We represent the interests of the small business community. Over 800 businesses support CDCC.

#### OFFICERS & BOARD OF DIRECTORS

- Board Chairperson**..... Dana F. Wattay, Wattay Accounting
- First Vice Chairperson** ..... Javier Santana, High Ground Solutions
- Vice Chair, Economic Development** ..... Janell K. Upton, Dover Federal Credit Union
- Vice Chair, Organizational Development** ..... Jesse C. Keleher, Harrington Raceway & Casino
- Vice Chair, Community Affairs** .... Denée Crumrine, Highmark Blue Cross Blue Shield Delaware
- Vice Chair, Legislative Affairs** ..... C. Scott Kidner, C.S. Kidner Associates/Capitol Strategies
- Vice Chair, Military Affairs** ..... Evans Armantrading, Jr., CNU Fit, LLC
- Treasurer**..... Richard A. Mohnk, Bayhealth Medical Center- Kent Campus
- Vice Chair Smyrna/Clayton** ..... Lincoln M. Willis, The Willis Group, LLC
- Past Chairperson** ..... Brian J. Stetina, Faw Casson

#### BOARD OF DIRECTORS

- Kim I. Adams, Mountain Consulting, Inc.
- Timothy M. Bayes, Century Engineering, LLC, A Kleinfelder Company
- Courtney Duncan, Merrill Lynch/Bank of America
- Laura Garofoli, Lean on Me Caregiving
- Dean Holden, Chesapeake Utilities
- Kevin Mills, Kraft Heinz
- Hassan Najjar, Biggs Museum of American Art
- Nick Polcino, Bally's Dover Casino Resort
- Charmaine A. Whyte, Delaware State University
- Doug Yorke, Dover Motor Speedway

#### POSTMASTER:

Send address changes to  
Chamber News,  
435 N. DuPont Highway,  
Dover, DE 19901

#### HONORARY BOARD MEMBERS AND GUESTS

- Robin R. Christiansen, Mayor, City of Dover
- Col. William C. McDonald, Commander, 436th Airlift Wing
- G. Jody Sweeney, Commissioner, Kent County Levy Court

#### ADMINISTRATIVE STAFF

- Dina C. Vendetti, President
- Cristal R. Brennenman, Executive Assistant & Director of Special Events
- Heather F. Cregar, Director of Marketing and Communications
- Cindy A. Friese, Assistant for Special Events and Sponsorships
- Jennifer L. Sutter, Director of Membership Sales and Retention
- Martha L. Lehman, Administrative Assistant
- Sara M. Bluhm, Director of Leadership Central Delaware

**Subscription Price:**  
**\$20.00 per year**

(included in membership dues)

Periodical Postage Paid at  
Dover, DE 19901

MEMBER CHAMBER OF COMMERCE OF THE UNITED STATES.  
CHAMBER CONNECTIONS PRODUCTION AND LAYOUT BY: DAILY STATE NEWS





**CORNERSTONE**  
MEMBERSHIP

# COMMITTED TO OUR COMMUNITIES

While Chesapeake Utilities (a subsidiary of Chesapeake Utilities Corporation) has proudly served Delmarva for over 160 years, delivering safe, reliable and secure energy for our customers, we also take pride in our role as a responsible and contributing member of the communities we serve. For this reason, we participate in a variety of initiatives with local and national organizations that support our employees, customers and communities alike. In 2024, the employees of Chesapeake Utilities Corporation gave over 5,000 volunteer hours across its national footprint, Delaware included, and through these community programs and volunteer opportunities we have built lasting relationships and become active members in the communities where we live, work and serve.

Our commitment and dedication to enhancing our communities focuses on four key areas:

- **HEALTH, WELLNESS AND SAFETY:** We care about the welfare of our communities and continue to honor our responsibility to operate in a safe and environmentally friendly manner.
- **EDUCATION:** Through companywide programs, our employees dedicate time to making a positive impact on students' lives by offering inspiration, information and guidance.



- **ENVIRONMENTAL STEWARDSHIP:** Our environmental commitment extends beyond compliance as we remain dedicated to sustainable environmental stewardship.
- **COMMUNITY DEVELOPMENT:** Through our Company programs and support of national and local organizations, we are stronger working together to ensure that our diverse communities are thriving.

As we reminisce on the past year, here are a few highlights of our volunteer events from 2024:

#### **Education - STEM Equity in Action:**

Chesapeake Utilities was one of 12 Delaware businesses that offered exclusive access and tours to science, technology, engineering and math (STEM) educators during STEM Equity in Action Day on Sept. 10. The event enabled teachers to get a close look at current STEM industry technology and innovation trends they could take back to their classrooms, and provided insight about what these businesses do, what skillsets they employ and what their equity policies are.

Organized and co-hosted by the Delaware Foundation for Science and Mathematics Education and Delaware Department of Education, educators visited two facilities of their choice from 12 top-tier companies.

Educators who visited our Chesapeake Utilities Corporation home office at Energy Lane toured our Safety Town facilities and the supervisory control and data acquisition (SCADA) room, followed by an employee panel discussion about operations, construction, engineering, renewables, business development and growth and retention. Discussion focused on what we do as a Company, sharing our talent acquisition and recruitment offerings and informing educators about the STEM skills students need to be hired for careers within the utility industry.



**Anthony Coker, training coordinator II, leads a tour of Safety Town.**

#### **Community Development – Habitat for Humanity Framing Frenzy:**

On October 9, 2024, the Chesapeake Utilities' Energy Lane parking lot became a construction site for the Central Delaware Habitat for Humanity, as 20 of our team members put their skills to work, constructing the exterior walls of a future home in Dover, Delaware. The

Central Delaware Habitat for Humanity makes the dream of homeownership a reality for families across the region, and we are proud to partner with them in this important effort



**Team Chesapeake came out in full force for the Central Delaware Habitat for Humanity Framing Frenzy event.**

*We look forward to another year working to ensure that our diverse communities grow and thrive! For more information about Chesapeake Utilities and our commitment to our communities, please visit us online at: [www.chpk.com](http://www.chpk.com) and [www.chpkgas.com](http://www.chpkgas.com).*

## State News welcomes new leader; continues excellence in journalism and advertising options

*"We strengthen the communities we serve by publishing unbiased journalism and growing local business."*

This mission is a north star for the Daily State News and BayToBayNews.com, as the team builds on decades of award-winning journalism and unique advertising opportunities.

And this autumn, a familiar face took the Delmarva sales and marketing leadership helm as Tonda Parks was named the Associate Publisher.



"I'm going to continue my role in community relations and outreach, everything I've done for decades with the paper," Parks said. "I'll be focusing on increasing subscribers, expanding our EDDM (Every Door Direct Mailed) publications and raising awareness about our unique

ownership—our network of publications is held in non-profit trust to preserve community journalism."

Known for her marketing savvy and welcoming demeanor, Parks boasts a nearly 40-year career in advertising and PR, including 20-plus years (nonconsecutive) in State News leadership.

Familiar around central Delaware, particularly with the CenDel Foundation and American Heart Association—Parks has also served on

numerous committees (just a few include the CDCC, the Downtown Dover Partnership, DE Solid Waste Authority and DTCC Development Council) and has been a member in good standing with Rotary International and more. She and her husband, Joe Parks, are well known for their charitable efforts, being recently named the 2024 Kent County Distinguished Citizens of the Year.



# CORNERSTONE MEMBERSHIP

## Gutter Care 101: Everything You Need to Know



As a homeowner who takes pride in your property, you understand that every component of your home contributes to its overall health and appearance. One critical element that often goes unnoticed is your gutter system. Proper gutter care not only enhances your home's aesthetic appeal but also safeguards it from potential damage caused by water infiltration. At G. Fedale, we're dedicated to helping you maintain your gutters in optimal condition, ensuring your home remains beautiful and protected for years to come.

Gutters play a vital role in directing rainwater away from your home's roof, walls, and foundation. Neglecting them can lead to a host of problems, including water damage to your roof and siding, in addition to cracks and structural instability in your foundation.

Over time, the added weight of debris and standing water can cause gutters to sag or pull away from the house. This can result in fascia and soffit damage leading to costly repairs. Basement

flooding can also result from ineffective gutters can allow water to enter basements, damaging belongings and creating mold issues.

Improper drainage from neglected gutters may erode soil and damage your landscaping. The excess water runoff can also erode walkways and driveways, leading to uneven surfaces.

Regular gutter care is essential to prevent these issues and protect your investment. Before diving into maintenance tips, it's important to understand the components of your gutter system:

- **Gutters:** Channels that collect and direct water away from the roof edge.
- **Downspouts:** Vertical pipes that carry water from the gutters to the ground level.
- **Gutter Guards:** Protective covers that prevent debris from entering the gutters.
- **Hangers and Brackets:** Support structures that attach gutters to the house.

Knowing these parts can help you identify issues during inspections. It's recommended to clean your gutters at least twice a year, typically in the spring and fall. This helps remove leaves, twigs, and other debris that can cause blockages. While cleaning, check for signs of wear and tear such as cracks/holes, rust spots, sagging and loose or missing hardware. Early detection of

these issues can save you from more significant problems down the line. Consider adding gutter guards to minimize debris accumulation, reduce the amount of maintenance needed, prevent blockages in the gutters and downspouts and extend gutter life.

Ensure that downspouts direct water at least 5-10 feet away from the foundation. You can achieve this by installing downspout extensions and adding splash blocks.

While DIY cleaning is possible, hiring professional gutter contractors like G. Fedale ensures thorough cleaning and inspection, giving you peace of mind. Professionals can safely access high areas; detect problems you might miss and provide expert solutions.

If your gutters are old, damaged, or consistently causing problems, it might be time for a new gutter installation. New gutters can improve your home's appearance and functionality. When installing new gutters, you'll want to consider the material options, style preferences, color choices and seamless gutters.

At G. Fedale, we are customer-obsessed and committed to providing top-quality services. Our team is trained and certified in the latest gutter installation and maintenance techniques. We have a proven track record of excellence in the industry.

We use only high-grade materials, including options for seamless gutters and gutter guards. Plus, we offer warranties on both materials and workmanship for your peace of mind.

G. Fedale tailors our services to meet your specific needs and preferences. We stand behind our work and strive to exceed your expectations. Beyond gutters, we offer a range of services to enhance and protect your home including roofing, siding, windows and doors.

Don't let neglected gutters compromise the safety and beauty of your home. Regular gutter care is an investment that pays off by preventing costly repairs and maintaining your property's value.

*Whether you need routine maintenance, gutter repairs, or a complete gutter installation, G. Fedale is here to help. Our professional team is ready to provide expert advice and top-notch service tailored to your needs. For more information on gutters or any of the services offered by G. Fedale, please contact us at [gfedale.com](http://gfedale.com) to schedule a consultation.*



### STATE NEWS

Continued from Page 3



"I hope that local businesses will consider us to help reach their customers," said Parks. "Our network of publications and our marketing opportunities can make an impact

on their growth. We actively seek out opportunities for partnerships, to keep showcasing our community assets and economic development."

Surveys that show that U.S. readers trust local news more than other media. So, the State News and its sister papers are a reliable resource for readers and advertisers. Reporting is published daily online.

"Starting at only \$5 per month, our subscriptions are a great value, and they're essential to community involvement and understanding," said Editor-In-Chief Andrew West, now in his 35th year with the company.

Readers can subscribe to a mailed and e-edition, or read articles online. The award-winning newsroom covers interesting people and events, plus complex issues, like State Legislature, elections and criminal justice. The team's recent "Seeds of Need"

series (organized by Managing Editor Logan B. Anderson) boosted public awareness about economic hardship and inspired new public initiatives.

"We remain true to our mission, providing information that readers can use to make informed decisions," said West. The Delmarva Group of Independent Newsmedia Inc. (all found at [BayToBayNews.com](http://BayToBayNews.com)) also includes the Greater Dover Independent, Milford Chronicle, Middletown Smyrna Independent and Millsboro Long Neck Independent, plus several Eastern Shore newspapers.

The public can submit Letters to the Editor, event notices ([BayToBayNews.com/calendar](http://BayToBayNews.com/calendar)), press releases, event photos and news tips.

Companies and nonprofits can place ads on the website, newspaper, magazines, event publications and by content sponsorship.

A hidden gem is the company's many advertising options, beyond the newspaper.

The company uses online platforms to reach customers. "It could be ads on our website, targeted emails, commercials in streaming services, like Spotify or connected TV—anything you're using the internet for," said Parks.

The company also hosts many events that offer businesses face time with potential customers, like the newly named Dover Galaxy Con, Citywide Black History Celebration, Stars of Delaware, Excellence in Education, What Women Want and the Thrive senior events.

*Read Delmarva news at [BayToBayNews.com](http://BayToBayNews.com), ask about advertising at [adsupport@iniusa.org](mailto:adsupport@iniusa.org) or call (888) 665-3848.*



# LCD Hometown Tourists for a Day!

The **Leadership Central Delaware (LCD) Class of 2025** embarked on a memorable Tourism Day, immersing themselves in the rich cultural, historical, and recreational landscape of Kent County. Organized by the Central Delaware Chamber of Commerce (CDCC), this LCD session encouraged participants to see their home through a fresh lens, gaining new appreciation for the area's vibrant tourism sector. The recurring sentiment of the day, "Wow, I didn't know this was here!" encapsulated the surprises and discoveries that awaited them.

## Morning: Setting the Stage for Tourism's Impact

The day began at the **Holiday Inn Express & Suites in Dover**, where participants gathered for a hearty breakfast. Hosted by **Juli Maichle ('08)**, General Manager and LCD alumna, this welcoming start set the tone for the day. Maichle, who co-chaired the event, highlighted her passion for local tourism and leadership development. Her enthusiasm underscored the importance of local businesses in shaping the community's identity.

Following breakfast, **Pete Bradley**, Executive Director of Kent County Tourism, delivered an engaging presentation on the "State of Tourism in Kent County." His talk shed light on the economic and cultural importance of tourism to Delaware. Key statistics revealed that tourism is the **4th largest private employer in the state**, generating significant revenue and employing nearly 50,000 people. Bradley emphasized how major events, like NASCAR races and arts festivals, draw visitors from across the country, creating ripple effects that

benefit local businesses and residents alike.

This presentation served as the perfect prelude to the panel discussion moderated by Maichle. The panel brought together industry leaders from various sectors, including **Gary Camp** of Dover Motor Speedway, **Kristin Garramone** of Roma Italian Ristorante, **Sarah Ottinger** of Tre Sorelle Dolce Ice Cream & Mini Golf and **Alexis Nunan** of Harvest Ridge Winery. Each panelist shared unique insights into their contributions to the local tourism ecosystem. From event planning at the Speedway to offering wine-pairing experiences, the panelists exemplified the collaborative spirit that defines Delaware's tourism industry.

## Midday: Exploring Kent County's Treasures

With their curiosity piqued, the group set off to experience some of Kent County's standout attractions firsthand. The first stop was **Bombay Hook National Wildlife Refuge**, a sprawling 16,000-acre natural sanctuary renowned for its biodiversity. **Joshua Smith**, Visitor Services Manager, provided an informative tour that highlighted the refuge's role in wildlife conservation and eco-tourism. Participants marveled at the diverse bird species and scenic landscapes while learning about the refuge's draw for photographers, birdwatchers, and casual visitors alike. The newly constructed Visitor Welcome Center added an extra layer of accessibility and comfort for guests.

Next, the group visited the **Air Mobility Command Museum**, a hidden gem that has earned a place in the top 10% of attractions on TripAdvisor. This world-class

museum, dedicated to preserving the legacy of military aviation, provided an inspiring glimpse into history. **Michael Hurlburt**, Operations Manager, led a one-hour highlight tour of the museum's extensive collection, which includes restored aircraft and engaging exhibits. For many participants, this visit underscored the importance of preserving and celebrating the region's military heritage.

A catered lunch at the **Biggs Museum of American Art** offered participants a chance to recharge while delving into the museum's impressive art collection. **Hassan Najjar**, The Biggs' new Executive Director, welcomed the group and then they were guided through an exploration of American art, focusing on the museum's role in fostering cultural appreciation and community engagement. This combination of fine art and local history offered a deeper understanding of the creative spirit that enriches Central Delaware.

## Afternoon: Uncovering Historic Gems

The afternoon portion of Tourism Day spotlighted the historical treasures of downtown Dover. Participants embarked on a guided walking tour of **The Green**, a central hub of colonial and early American history. **Sarah Mullen**, Historic Site Interpreter, brought the past to life with vivid stories and historical insights. The group explored iconic landmarks and learned about the pivotal moments that shaped Delaware's identity as the First State. The tour also highlighted the interconnectedness of Dover's historical sites, creating a seamless experience for visitors and residents alike.

The group then made their way to the **Dover Motor Speedway**, home to the legendary Monster Mile. Participants were given VIP access to the Speedway's media center, offering a behind-the-scenes look at one of Delaware's most iconic venues. **Doug Yorke**, Marketing Director, shared how the Speedway has adapted in a post-pandemic world, hosting diverse events that cater to a wide range of audiences. Beyond NASCAR races, the venue now offers free entertainment options and community-focused programming, cementing its status as a versatile and inclusive destination.

## Conclusion: A Day of Discovery and Inspiration

The **LCD Tourism Day** was more than just a tour of attractions—it was a journey of discovery and inspiration. Participants gained a deeper appreciation for the assets that make Central Delaware a unique and vibrant destination. From the natural beauty of Bombay Hook to the historical significance of The Green and the dynamic energy of Dover Motor Speedway, the day offered a comprehensive snapshot of what makes the region special.

The CDCC extends heartfelt thanks to all the sponsors, speakers, and hosts who made this day possible. Your dedication to showcasing the best of Kent County tourism is truly inspiring. For the Leadership Central Delaware Class of 2025, Tourism Day was a reminder of the power of community and collaboration, inspiring them to champion the treasures of Central Delaware in their future endeavors.

*For more information about Leadership Central Delaware, please visit our website at [www.cdcc.net](http://www.cdcc.net) and click on the "Education" link.*







**LCD LEADERSHIP CENTRAL DELAWARE**  
The annual program of the Central Delaware Chamber of Commerce

*Thank you to our Sponsors!*  
Confirmed as of 9/17/24




# Special Feature

## Celebrating the Holidays in the Capital



Despite the frigid temperatures and wintry wind, Central Delaware welcomed the holiday season with warm hearts at the Capital Holiday Celebration on Thursday, December 5th. Loockerman Plaza in Downtown Dover was filled festive lights, holiday tunes, caroling, dancing and a true sense of community. The centerpiece of the festivities was, as always, the grand tree in front of City Hall that was illuminated during a special ceremony. Families and friends gathered at the stage to witness this joyful moment marking the official start of the holiday season in Dover. The tree, adorned with glowing white lights, served as a symbol of unity and joy for the entire community.

The celebration catered to all ages with a variety of entertainment options. Prior to the tree-lighting ceremony, children delighted in the holiday craft projects offered by the Dover Public Library, and a sneak peak of the upcoming Nutcracker Ballet presented by Delaware Ballet.

Event goers warmed up with free hot chocolate and cookies provided by Central Delaware Habitat for Humanity and Kent County Tourism. Food offerings for the evening were available from the Christmas Cafe at Wesley United Methodist Church, our favorite downtown restaurants the Grey Fox Grille, House of Coffi and Bibi's Brunch, and local food trucks Travelin' Tom's Coffee Truck of Dover, Woody's on Wheels, plus others which were set up adjacent to the stage offering entrees, desserts, and hot drinks.

During the tree lighting ceremony, local dignitaries and business professionals filled the air with harmonious melodies, spreading the joy of the season, encouraging the crowd to sing along. But the true stars of the caroling were the local school children from South Dover Elementary, Wesley Preschool & Playcare, Town Pointe

Elementary and Dover High School. Their performances brought smiles to everyone's faces and had their families vying for the best spot to snap a keepsake photo or video of their special holiday performance.

We would be remiss if we didn't mention the stellar emcee performance by Gigi Windley. She recited a special "script" customized for this year's event by the CDCC's own Dina Vendetti and based on the poem "Twas the Night Based Christmas." The special talent and concentration required to recite this script combined with the cold winds blowing across the stage have certainly earned Gigi an extra gift under her tree this Christmas!

At the end of the ceremony, Santa arrived by firetruck will being serenaded by the crowd-sung, holiday favorite, "Santa Claus is Coming to Town." His arrival in Dover always lifts the spirits of even the most challenging Scrooge.

The CDCC would like to thank, shoutout, and applaud the following organizations for their performances: CDCC Board of Directors, Daily State News accompanied by Jim Rezac, Delaware Ballet, South Dover Elementary School Chorus, Kent County Legislators & Kent County Levy Court Commissioners, Wesley Preschool & Playcare, Towne Point Chorus, Dover High School Select Ensemble.

The CDCC would also like to extend a sincere thank you to the

following organizations who work so hard to bring the community together to celebrate the holiday season through this event: Central Delaware Habitat for Humanity, City of Dover, City of Dover Parks & Recreation, City of Dover Police, City of Dover Public Works, Daily State News, Dover Public Library, Downtown Dover Partnership, First State Manufactured Housing Association, City of Dover Councilman Bill Hare, Kent County Tourism, Robbins Hose Co. No. 1, City of Dover Councilman Gerald Rocha, WBOC 16 / Fox 21, Wesley United Methodist Church, and Gigi Windley. Thank you to everyone who donated to the canned food drive as well!

Downtown Dover's Capital Holiday Celebration once again proved to be a magical experience for all who attended. The festive decorations, tree lighting ceremony, entertainment, food treats, and community engagement created a memorable atmosphere that will linger in the hearts of residents and visitors throughout the holiday season.

*For more information about community events happening throughout Central Delaware, be sure to visit the calendar of events on our website at [www.cdcc.net](http://www.cdcc.net). And why not add your own events to the calendar while you're on there?!*





# Member News

## Wreaths Across America Stops at Dover Motor Speedway

On Thursday, December 5th, Dover Motor Speedway hosted the only Delaware stop on Wreaths Across America's annual trek to honor America's heroes at Arlington National Cemetery. Wreaths Across America's more than 60-vehicle convoy of tractor-trailers, Patriot Guard riders, veterans, Gold Star Families and first responders paraded to the Monster Monument at Victory Plaza before a 90-minute ceremony honoring the participants and the national effort.

Despite the cold weather, and the heavy rains the day before, the sun shone brightly on the many local veterans, active-duty military, government officials, business owners, students, local public who attended the event.

The free ceremony opened with a medley of patriotic and holiday songs performed by the Dover Air Force Base (DAFB) Middle School Chorus. The event continued with additional special programming of several presentations, the Presentation of Colors by the 436th Airlift Wing Honor Guard, singing of the National Anthem by Senior Airman Nolan T. Kuhn – DAFB Eagle Choir, a demonstration by the Silent Drill Team from Caesar Rodney High School, and a DAFB C-5 Galaxy Flyover. The event emcee was Mike Bagley, a SiriusXM NASCAR host, Motor Racing Network and NBC Sports announcer and Milford, Delaware-native.

Legislative proclamations were presented by Delaware State Senator Dave Lawson and Delaware State Representative Shannon Morris. During his presentation,



Senator Lawson asked all the veterans in attendance to stand up. He had a brief emotional moment when he said, "We can't thank you enough."

The tradition of placing handmade balsam wreaths on fallen heroes' graves began with the Worcester Wreath Company of Harrington, Maine, in 1992. The organization's mission, Remember, Honor, Teach, is carried out in part each year by coordinating wreath-laying ceremonies each December at Arlington, as well as at hundreds of veterans' cemeteries and other locations in all 50 states and beyond.

In 2023, Wreaths Across America and its national network of volunteers placed more than 3 million sponsored veterans' wreaths on headstones of our nation's service members at 4,224 participating locations. This was accomplished with the support of more than 5,000 sponsorship groups, corporation contributions, and in-kind donations from the transportation industry across the country.

"We have a year-round mission," said Karen Worcester, Wreaths Across America's executive director. "I watch the Gold Star Families heal each other during the convoy – and they heal me as well. These Gold Star Families are the greatest example of the love of country that I've seen. You are what we love about this country."

Connections between Wreaths Across America and the Dover community were evident throughout the program. Patty Elliott, National President of the American Gold Star Mother Inc., told the crowd during her presentation that she couldn't be at the dignified transfer of her son, Daniel Lucas Elliott at DAFB, but she knew the team there would take good care of him and see that he made it home to her.

Armed Forces Medical Examiner System deputy commander, Colonel Christopher Gordon, expressed his belief in the importance of Wreaths Across America by sharing a saying he has heard that humans die twice: once when they actually die and the second when people stop saying their name. He added that Wreath Across America makes sure that the veterans who have passed are always remembered.

Dover Motor Speedway has been a long-time supporter of DAFB and our local military, and Wreaths Across America is no exception. "For us to be a pit stop on their way to Arlington is an honor and privilege," said Mike Tatoian, Dover Motor Speedway's president and general manager. "It was cold outside but everyone had a warm heart. During this holiday season, this is quite a reminder of the debt we owe those heroes who came before us and the responsibility we have to honor their sacrifice."

An especially touching part of the program was when a Veteran's Wreath construction exercise was presented by Gold Star Mothers and families. As the different elements were added to the wreath, the signifi-

cance of what each element represented was explained. Each participating family member was given a photo of their loved one to display for the crowd when the wreath was complete.

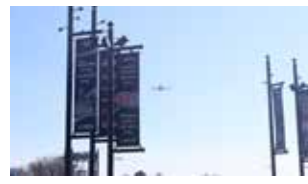
To conclude Thursday's event, Morrill Worcester, the founder of Wreaths Across America, waved a ceremonial green flag and implored the convoy to "start their engines" toward Arlington National Cemetery. National Wreaths Across America Day was Saturday, Dec. 14.

The program ended with the Delaware Celtic Society Pipe Band playing Amazing Grace, and Bugles Across America performed Taps from high atop the plaza on the Monster Monument.

Dover Motor Speedway partners who volunteered their time and talent to help produce the event include: Collective Event Group, City of Dover Fire Department, City of Dover Police Department, Delaware Department of Transportation, Delaware State Police, High 5 Hospitality, International Sound Corporation, Kent County Department of Public Safety, Paramedics & Ambulance support, M&M Parking, Mission BBQ, Pyrotecnico and Waste Masters Solutions.

For more information on Dover Motor Speedway, please visit their website at [www.DoverMotorSpeedway.com](http://www.DoverMotorSpeedway.com).

**For more information on Wreaths Across America, to donate or to sign up to volunteer visit [www.WreathsAcrossAmerica.org](http://www.WreathsAcrossAmerica.org).**





## Member News

# Downtown Dover Bringing the Heat with Fire and Ice Festival

The Downtown Dover Partnership (DDP), in collaboration with the City of Dover and community partners, is proud to present the inaugural Fire and Ice Festival, an immersive celebration of art, food, family fun, and the city's ongoing transformation. The festival will take place Friday, January 17th, 3PM - 9PM, and Saturday, January 18th, from 12PM to 9PM in the heart of downtown Dover stretching on Loockerman from the Library to 120 South Governors Ave.

This two-day winter spectacular will feature 32 small ice sculptures and five large, live-carved ice sculptures, alongside activities that bring together Dover's vibrant community. Visitors will experience the magic of live ice carving starting Friday at 3 PM as well as midday Saturday, while enjoying family-friendly entertainment, including a Kid Zone, Parklets on Loockerman Street, the fiery flavors of Fire, Ice, and Spice, S'more's, Live Performances, and much more.

"The Fire and Ice Festival is about more than just winter fun—it's a celebration of the physical and cultural transformation happening in downtown Dover," said Diane Laird, Executive Director of the Downtown Dover Partnership. "This event highlights our commitment to revitalizing the city through art, local business, community engagement, and several catalyst redevelopment projects, including a mobility center for +/-350 cars, bikes, and retail, as well as a mixed-use project with first floor retail, coffee shop, wellness center, and daycare, and +/-160 apartments above. All of these are projects outlined in the Capital City 2030 Master Plan."

The public is invited to stop by The Hive on Loockerman (28 W. Loockerman) to learn and see more about this exciting plan directly from project team members during the Fire and Ice Festival. "2025 is the year that we will begin to see these large-scale projects come into view on their sites, with groundbreaking."

"The City of Dover is pleased to be partnering with the DDP on the inaugural Fire & Ice Festival, especially at a time of year when things can be slow for merchants and restaurant owners, and people are getting a little cabin-fever,"



Ben Schlegel

commented Mayor Christiansen who believes it is important to bring the community together at events throughout the year. "And we'll have a little surprise to announce in early January, so keep your eyes and ears open for some news about the Festival Finale, because we're going to go out with a bang."

Ben Schegel, owner of BSide Events of Philadelphia, was selected to oversee the coordination of the event as he brings many years of experience coordinating large-scale events in the region. "I have always appreciated the work of communities to come together to keep their downtown core fresh and vibrant. So I was really excited to be invited to be a part of this particular event..."

### Event Highlights:

- **Live Ice Sculpting:** Watch professional sculptors transform massive ice blocks into works of art.
- **Fire, Ice, and Spice:** Enjoy special fire-and-ice-themed dishes and drinks from local restaurants, eateries and food trucks.
- **Kid Zone:** Family-friendly activities, including face painting, crafts, and more.
- **Shop Local:** Explore downtown shops and vendors offering festival specials.
- More to be announced, including a special festival finale!

With an estimated 6,000+ attendees over the course of the event, the Fire and Ice Festival will create opportunities for local businesses to shine while providing a memorable experience for visitors.

### A Symbol of Downtown Dover's Transformation

This festival is part of DDP's ongoing effort to revitalize downtown Dover through the Capital City 2030: Transforming Downtown Dover Master Plan. The festival celebrates Dover's unique blend of history, culture, and creativity, drawing attention to the progress being made in enhancing the city's physical and economic landscape.

### Event Details

When:

- Friday, January 17th, 2025 – Live ice carving begins at 3PM
- Saturday, January 18th, 2025 – Live ice carving and other activities from 12 PM to 9PM

Where: Downtown Dover  
Admission: Free for all attendees

For more information, visit [FireandIceDover.com](http://FireandIceDover.com) or contact Ben@BsideEvents.com.

About the Downtown Dover Partnership:

*The Downtown Dover Partnership is committed to improving the quality of life for residents and visitors through collective collaboration, economic development, and the promotion of Dover's unique historic charm. For more details, visit [DowntownDoverPartnership.com](http://DowntownDoverPartnership.com).*





# How Artificial Intelligence is Helping Bayhealth Discover Breast Cancer Earlier

Early detection is critical in the fight against breast cancer. The sooner cancer is found, the more treatment options are available, and the better the chances of long-term survival. Artificial intelligence (AI) is playing an increasingly important role in helping radiologists detect breast cancer earlier than ever before.

Bayhealth has incorporated AI into mammography, providing radiologists with a powerful new tool to aid in the early detection of breast cancer.

“Our goal is always to catch cancer as early as possible,” says Diagnostic Radiologist Daniel Wood, MD, head of Breast Imaging at Bayhealth. “AI helps us do that. It gives our patients the best chance at long-term survival, and we’re proud to offer this technology here at Bayhealth.”

## What is AI, and how does it help with mammograms?

Artificial intelligence is a technology that enables computers to analyze large amounts of data and “learn” from it, mimicking human thought processes. In mammography, AI programs review the hundreds of images produced by a 3D mammogram and highlights areas that might look suspicious.

“Our AI system looks at every single slice of a 3D mammogram, often more than 400 images, and flags areas that might need a second look,” explains Dr. Wood. “This serves as a kind of second set of eyes for the radiologist, helping ensure that nothing is missed.”

Radiologists still make the final decision, but AI helps by highlighting potential issues that may otherwise be overlooked. AI is particularly effective at spotting subtle changes in breast tissue that could indicate early-stage cancer, which might be missed during a traditional review.

## A Game-changer for early detection

Bayhealth became an early adopter of AI in mammography in 2021, making it one of the first



community healthcare systems to implement this advanced technology. The results have been significant.



Daniel Wood

“We’ve seen an improvement in our cancer detection rate since we began using AI,” says Dr. Wood. “We’re catching cancers that are smaller and earlier-stage, which means they’re easier to treat and come with a better prognosis.”

Studies support Bayhealth’s experience. Research shows that AI improves the detection of smaller cancers while also reducing the rate of false positives. This results in fewer patients being called back for additional tests, reducing both anxiety and unnecessary procedures.

“We’re catching cancers that are smaller and earlier-stage, which means they’re easier to treat and come with a better prognosis.”

## No added cost, just added confidence

One of the standout benefits of Bayhealth’s AI technology is that it is available to all patients undergoing mammograms at no additional cost. By offering this cutting-edge tool to every patient, Bayhealth ensures that AI enhances the expertise of its highly-skilled radiologists, while providing patients with added confidence in the accuracy and reliability of their results.

“There’s no special order needed for AI, and it doesn’t cost the patient extra,” notes Dr. Wood. “Bayhealth made a significant financial investment in this technology because we believe it provides our patients with the best chance of detecting breast cancer early.”

## How AI is revolutionizing radiology

Bayhealth is not alone in embracing AI. Across the healthcare industry, providers are increasingly using AI to enhance imaging processes. As of July 2024, the U.S. Food and Drug Administration (FDA) had cleared more than 950 AI algorithms for medical use, with radiology accounting for approximately 76% of these approvals. The number of radiology-related AI algorithms continues to grow by more than 100 each year.

Radiology is a leading field for AI integration due to its reliance on detailed image analysis. AI reduces the workload for radiologists, improves accuracy, and speeds up reading times. For example, AI can automatically identify critical findings, assist with measurements, and streamline workflow, benefiting both doctors and patients with faster, more accurate diagnoses.

“It’s important to remember that technology is only part of the equation. Staying on top of regular screenings is the first and most crucial step in fighting breast cancer. Early detection saves lives, and AI—combined with continued awareness and commitment to

prevention—helps us do that more effectively than ever before,” says Dr. Wood.

Bayhealth’s mission is to strengthen the health of our community, one life at a time. Bayhealth’s commitment to our community runs deep. As central and southern Delaware’s largest healthcare system, Bayhealth is comprised of Bayhealth Hospital, Kent Campus and Bayhealth Hospital, Sussex Campus, the freestanding Emergency Department in Smyrna, Bayhealth Emergency and Urgent Care Center, Total Care in Milton, as well as numerous satellite facilities and employed physician practices encompassing a variety of specialties. Bayhealth is a technologically advanced not-for-profit healthcare system with nearly 4,000 employees and a medical staff of more than 450 physicians and 200 advanced practice clinicians. Bayhealth is an affiliate of Penn Medicine for Cardiac Surgery, Vascular Surgery, Orthopedics, and Neurosciences and is a member of the Penn Cancer Network. In Fiscal Year 2023, Bayhealth recorded 107,911 emergency department visits, 18,022 patients admitted to beds, 2,545 births, and provided more than \$12 million in unreimbursed care to patients.

[Visit Bayhealth.org for more information](https://www.bayhealth.org)





## Member News

# New Outdoor Exhibition at the Biggs Museum: Kinetic Sculptures

The Biggs Museum of American Art is thrilled to unveil its latest outdoor exhibition, featuring five stunning kinetic sculptures by Baltimore-based artist Paul Daniel. These mesmerizing sculptures are not only a visual delight but an engaging experience that invites viewers to connect with the natural elements in new ways. Previously on view in Lewes, these kinetic wonders were the highlight of guided tours and children's classes at the Rehoboth Museum, and now, the Biggs Museum looks forward to bringing similar programs to its local community.

### What Are Kinetic Sculptures?

Kinetic sculptures are a captivating form of public art designed to move with the wind, creating an ever-evolving visual experience. Each of Paul Daniel's sculptures is composed of carefully balanced parts that catch the breeze, sending colorful pieces and mirrors into motion. These parts work together to create reflections and refractions, transforming the light and landscape around them. Visitors can witness these sculptures changing with the day's shifting sunlight, interacting with the wind and casting playful reflections on their surroundings.

Daniel's sculptures are uniquely attuned to their environment, serving as natural indicators of weather patterns. As the artist himself



explains: "The kinetic sculptures all move in different ways, and they tell you where the sun is in the daytime, where the wind is stronger, and the direction it's coming from. They all move at different velocities. It's very exciting."

### The Importance of Accessible Public Art

Public art plays a crucial role in making the arts accessible to everyone, regardless of background, age, or experience. Outdoor exhibitions like this one break down the traditional barriers of museum walls, inviting people to interact with art in open spaces. When art is accessible and approachable, it can transform a place, enriching the lives of those who encounter it and creating a shared sense of culture and community.

Kinetic art in particular brings joy to the public space because it's engaging and interactive. As the sculptures move and respond to their environment, visitors experience something new each time they see them, making each visit to the Biggs Museum grounds a unique experience. Children and adults alike can feel the excitement of discovery,

inspired by art that responds to wind and light in ways that feel alive.

### Bringing Regional Art to the Biggs Museum

This exhibition proudly highlights a regional artist whose work reflects the spirit of creativity that thrives in the Mid-Atlantic area. Daniel's kinetic sculptures draw inspiration from natural forces, celebrating the elements that shape our region and adding to the growing presence of public art in Delaware. By showcasing work from local and regional artists, the Biggs Museum strengthens its commitment to fostering connections within the community and making art a vibrant part of everyday life.

### Plan Your Visit

The Biggs Museum invites you to experience these kinetic sculptures firsthand. With plans for guided tours, children's programs, and community events throughout the season, this outdoor exhibition will be a cornerstone of accessible art programming in our area. Bring the whole family to explore how art and nature come together in this unforgettable exhibition!

*For more information on the Biggs Museum, please check out their website at [www.thebiggsmuseum.org](http://www.thebiggsmuseum.org).*



## ECONOMIC FORECAST

Continued from Page 1

B.I.G. Investment Services, is designed to give everyone a snapshot of the economic health of our area, from a 10,000-foot view of what's happening at the national level all the way down to what we can expect to see in Kent County. Our guest speakers will be able to share facts, trends, predictions and speak knowledgeably about the implications these factors have for our business community. Participants should be ready to take lots of notes!

This year's speakers will represent a powerhouse of knowledge and insight as they guide us through the ups and



downs of recent months and shed light on the trends and patterns that will guide the year to come. David Boothe is the Founder and President of B.I.G. Investment Services, one of the largest independently owned fiduciary firms in the state. He got his start in financial services in 1993 and has been serving individual investors as a full-service financial advisor and wealth manager for 25 years. David will share his insights on the economy at a national level.

Linda Parkowski is the well-known executive director of the Kent Economic Partnership, Inc., trading as Choose Central Delaware, the economic development agency for Kent County, Delaware. Linda will share her knowledge of the financial health of Kent County, while also giving an update on her progress with bringing new businesses into the area.

We all know that economic forecasts are simply predictions, and there is certainly room for error even with the most educated guesses. They can, however, demonstrate for us the general direction in which the economy is moving – and that can be very helpful! We look forward to seeing you at this

event where we can all learn things about our region's financial health that will help us make informed fiscal decisions for the year to come!

*This informational event, brought to you by B.I.G. Investment Services, will take place on Thursday, January 16th, at Polytech's Looking Glass in Woodside, beginning at 7:30 am. Tickets are \$27 for CDCC members, \$37 for non-members. To register online visit [www.cdcc.net](http://www.cdcc.net) or call the CDCC Office at (302)734-7513.*



## Member News

# Delaware Shoppes Sings Praises of Delaware Day

Did you know that December 7th is Delaware Day? Yes! It's a celebration of that day in 1787, when Delaware became the first state to ratify the Federal Constitution, therefore making Delaware the first state in the new nation.

Tom Smith, manager of the Delaware Shoppes, knows all about Delaware Day. Plus, he also knows the words to the Delaware state song and felt that Delaware Day 2024 was the perfect opportunity to sing that song.

A small group of locals, including Dover mayor Robin Christiansen and his wife Cindy Christiansen, joined Tom on the cool, but sunny December 7th to sing "Our Delaware" acapella style for the First

Annual Delaware Day Sing Along. Although we don't think the judges from The Voice were listening in, long-time Delawareans did a great job carrying the tune. Everyone left promising to attend the Second Annual event in 2025.

You can find the words to "Our Delaware" at <https://delaware.gov/guides/facts/> and more information about Delaware Day at <https://delawareday.delaware.gov/about-delaware-day/>. *For more information about the Delaware Shoppes, please call Tom at 302-674-1787 or stop in the store at 325 S. State Street, Dover, Delaware. And start practicing now for the December 2025 sing along.*



## HOME & GARDEN SHOW

Continued from Page 1

way to reach qualified customers in your target market!

Customers who attend our Home & Garden Expo will already be interested in the benefits of your products and services because they come to this event specifically to put their next home project into action. They will already have ideas in mind – what they're lacking is the know-how to get their desired improvements done. You will be able to listen to each of their needs and address them on an individual basis. Once these customers engage in a conversation with you, the expert in the field, and have a great informational experience, they'll be ready



to buy. After all, we know face-to-face selling creates trust!

Imagine the product and service awareness that you'll be able to create with the visitors to our show. Plus, you'll have an amazing opportunity to share the latest trends in design, product offerings, maintenance tips, and more about everything for improving and redesigning the customers' living spaces, inside and out. You'll also have all the time you need to ensure they gain a complete understanding of what's involved in completing their projects. They won't

be in a rush because they've made it a priority to be there – they will want to spend time listening and learning. These are people who have an idea of what they want – you, the expert, are the person to help them achieve it!

Not only is the Home & Garden Expo a great place to meet prospective customers, but it's also a great forum for networking with other industry professionals. The Central Delaware business community thrives on business referrals. Consider the partnerships that can be created at this event – partnerships that will earn you additional business are a great way to promote your expertise!

The CDCC is looking for builders, plumbers, landscapers, pool

companies, electricians, security system providers, painters, gardeners, pest control experts, specialists in paving, realtors – anyone who has a role in creating and re-creating a place called "home." If you are a home improvement specialist, please consider joining our show in February/March to share your craft and expertise... and gain many new customers and leads for your business.

*For more information about how to connect with our guests as a vendor, contact Cindy Friese at [cfriese@cdcc.net](mailto:cfriese@cdcc.net) or call the CDCC Office at (302) 734-7513. We look forward to planning for Spring and Summer projects with you at this exciting event!*

## SUNSET MIXER

Continued from Page 1

The annual Showcase event is designed to help members and prospective members fully understand the value that a CDCC membership brings. Information tables will feature our four pillars: Education, Legislation, Marketing, and Networking. The displays will help guests understand how the Chamber assists its members in each of these areas. Do you have friends or business colleagues who might benefit from chamber membership? Consider inviting them to this information-filled evening and let them witness first-hand what a chamber membership can do for them. The



Showcase is also a great way for our veteran members to get up to date on all the new programs and events their membership has to offer.

Our Member 2 Member (M2M) Expo is a wonderful example of the kind of networking opportunities that are provided by the Chamber. Members are invited to purchase a

space for a table-top display showcasing their business. Our semi-annual M2M event is a great way for our members to become familiar with what our Central Delaware business community is all about. It will also be a terrific venue for showing prospective members one of the ways that we help to build bridges between our member businesses. To purchase a table-top space, call Cindy Friese at 302.734.7513 or email her at [cfriese@cdcc.net](mailto:cfriese@cdcc.net).

We are excited to hold our event at the Delaware Agricultural Museum again this year and give our guests a preview of what a treasure that museum is as it represents Delaware's largest industry! The team at the

museum strives to promote agricultural education, awareness and an appreciation for cultural heritage, enriching the lives of the people in our community, our state, and beyond our borders. Please join us and get a glimpse of what the museum does and the incredible collection that is housed there.

*For more information or to register for this three-in-one evening of activities, please call the CDCC Office at (302)734-7513. You can also register online through our Calendar of Events at [www.cdcc.net](http://www.cdcc.net). We look forward to seeing you at the Delaware Agricultural Museum on January 29th!*



# Celebrating the Holidays – Chamber Style!

Smiles and grins... delicious food... jazzy holiday music... a warm, welcoming atmosphere... all components that contributed to the festive, holiday feel of this year's Christmas party. Hugs and laughs, handshakes and photos, conversations and re-connecting all signaled high spirits as Central Delaware's business community gathered to celebrate the holiday season.

Joe and Kristin Garramone and their team at Roma Italian Restaurant/Sul Tempo Cocktail Lounge truly turned the CDCC's annual Holiday Party into a Festa di Natale delizioso (a delicious Italian Christmas party)! Executive Chef Joe and his brigade marked the occasion as they offered guests beautiful authentic Italian foods – meatballs, antipasto platters, pasta, and a variety of other delectable treats, including their now-famous bread pudding, created by Sous Chef Felicia. In addition, guests enjoyed a sampling of wines and beers, as well as two original signature Christmas cocktails – Winter Wonderland and Joyful Noise – created for the occasion by bartender manager, Allan Timlin. The staff worked hard to ensure that everyone was well taken care of and felt very much at home.

Jazzy renditions of classic Christmas carols added to the ambiance of the evening. The Joe Baione Trio wowed the crowd with their talent and skill as they performed tune after tune of holiday favorites. Guests were singing along and tapping their toes as the trio entertained everyone. In an impromptu surprise, the CDCC Board members who were present and members of the Dover Air Force Base leadership team offered their spirited rendition of "Rudolph, the Red Nosed Reindeer," introduced by Central Delaware's newest rapping sensation, La-La-Laura Garofoli!

Networking and door prizes found their place in the celebration, as well as a 50/50 drawing won by Michael Garafolo from Lean On Me Caregiving. Our Member of the Month was drawn, and Brenda Shields from BES Business Solutions will be the Member of the Month for February! With 100+ people in attendance, it was easy to connect and re-connect with colleagues and exchange holiday greetings. Photographer



Mike Baker had the Shasta Shutterbug mobile photo booth set up at the door to take festive photos of our guests! This was a great way to send everyone home with a keepsake from the memorable evening.

A special thank you to all of you who were able to attend this year's Christmas party. We would also like to share our gratitude with the folks at Roma Italian Restaurant for opening their doors to us and making us feel so much at home. A special thank you also to our generous sponsors and contributors for making this evening of celebration possible! Christmas Cheer Sponsors: Bally's, Horty & Horty, PA, and Weiner Benefits Group; Holiday Feast Sponsor: High Ground Solutions; Jingle Bell Sponsors: Artisans' Bank, CenDel Foundation, Del-One Federal Credit Union, Excel Business Systems, Merrill Lynch – Connell & Associates, Proctor & Gamble, Shore United Bank, and Welcome Wagon.

The team at the Central Delaware Chamber of Commerce wishes all of you a Buon Natale and a Felice Anno Nuovo (that's Italian for a Merry Christmas and a Happy New Year)!





# CDCC Member List by Business Category

## *Ring in a new year with all of our amazing Chamber members!*

**Bold** indicates a Cornerstone Member | \* indicates a 5 Star Member

as of Dec. 2024

### 55+ Adult Communities

Westminster Village\*  
Benchmark Builders  
Ingleside Homes Inc.  
Luther Towers of Dover

### Accountants, CPA'S & Tax Services

Faw Casson\*  
Wattay Accounting\*  
AC Tax Group LLC  
First State CPAs  
Hodges Accounting & Tax Services  
Horty & Horty, PA- Douglas R. Phillips  
Jefferson, Urian, Doane & Sterner, PA  
Liberty Tax Service  
Luff & Associates, PA  
Mitten & Winters, CPA  
S&G Accounting & Tax Services  
Sandra S. Gulledge, CPA, PA  
Savant Wealth Management

### Advertising

Delaware Indoor Advertising Network, LLC  
Effectv

### Agri-business

Insight Ag Scouting, LLC

### Aircraft

Boeing

### Alcohol Distributors

N.K.S. Distributors, Inc.

### Antiques

Skocik's Discoveries and Collectables

### Apartments, Condominiums & Townhomes

Blue Hen LLC dba The Village at Blue Hen  
Colonial Investment & Management Co., Inc.  
Lake Club Apts - Westover Companies

### Apparel & Accessories

Sha Scrubz & Apparel

### Appliances & Television Sales & Services

BH Repairs LLC, dba Dover Vacuums

### Architects & Planners

Becker Morgan Group, Inc.\*  
StudioJAED

### Assisted Living Communities

Brookdale Dover  
Dover Place Senior Living  
State Street Assisted Living

### Attorneys & Law Firms

Barros, McNamara, Malkiewicz & Taylor\*  
Benton & Shockley Law  
Delaware State Attorney General's Office  
Hudson, Jones, Jaywork & Fisher  
Law Offices of Bonnie M. Benson  
The Malmberg Firm, LLC

### Auction Services & Auctioneers

Spence's Bazaar & Flea Market, Inc.  
Stephen R. Harrell Auctioneer, LLC

### Automobile Dealers & Service

i.g. Burton & Co., Inc.\*  
Hertrich Family of Automobile Dealerships  
i.g. Burton Toyota of Dover  
Kent County Motor Sales Co.  
Preston CDJR of Dover  
Willis Chevrolet, Inc.

### Automobile Repairs & Body Service

Meineke Car Care - Smyrna  
Pugh's Service

### Bakeries

La Baguette French Bakery\*  
Bavarian Bakery & Deli  
Crumbl Dover  
Insomnia Cookies

### Banks & Credit Unions

#### **Dover Federal Credit Union\***

Del-One Federal Credit Union\*  
FCCB\*  
Artisans' Bank  
Fort Sill National Bank  
M&T Bank - Dover Main  
PNC Bank  
Shore United Bank - Camden  
Shore United Bank - Dover  
Summit Community Bank  
TD Bank - Limestone  
WSFS Bank - Camden Branch

### Banquet & Meeting Facilities

Evergreen Farms  
St. Andrew's LC Great Hall and Gathering Space

### Beverages

Pepsi Bottling Ventures of Delmarva

### Bookkeeping, Payroll & Business Services

Payroll Management Assistance

### Brewery

Mispillion River Brewing

### Brick Supplies & Hardscaping Services

Delaware Brick Co.

### Builders-Developers-Management

Lessard Builders, Inc.\*  
Caruso Homes, Inc  
D.R. Horton  
Green Diamond Builders, Inc.  
K. Hovnanian Homes of DE, LLC  
Lenape Builders, Inc.  
Tidemark Construction

### Building Materials

Pole Building Supplies

### Business & Economic Development

Delaware Department of Labor-  
Employment and Training\*

### Business & Executive Coaching

Elevations Unlimited\*  
Tracey Ingram, High Impact Money Coach\*  
Jonathan L. Parker & Associates, LLC

### Business Consulting

BES Business Solutions LLC  
Ever Forward Consulting  
Integrated Financial Insights LLC  
SCORE Delaware

### Business Services

BBSI  
Better Business Bureau Serving DE  
Heartland Payment Systems  
INsight Management Group  
Lifestyle Document Management, INC  
Small Business Development Center  
U.S. Small Business Administration  
ZenBusiness

### Camping

Yogi Bear's Jellystone Park at Delaware Beaches

### Car Wash & Detailing

Coastal Car Wash  
ModWash  
Westside Car Wash/Clean Car, Inc

### Carpet, Tile & Flooring

First Class Cleaning Service Inc.  
Paul Edwards Carpet

### Catering

Skyline Catering LLC  
The Catering Company  
Woody's on Wheels

### Cement, Concrete, Sand, Gravel & Stone

Atlantic Concrete Co., Inc.  
Porter's Sand & Gravel, Inc.

### Chambers Of Commerce

Delaware Black Chamber of Commerce  
Delaware State Chamber of Commerce  
Middletown Area Chamber of Commerce  
Chamber of Commerce for Greater Milford, Inc.

### Child Development

Beach Babies Child Care  
Del-Mar-Va Council, Boy Scouts of America

### Chiropractors

Dover Family Chiropractic  
Dover Health Care Center  
Smyrna Chiropractic LLC

### Churches

Christ Church  
Mt. Zion A.M.E. Church -Dover  
The Salvation Army  
Union Baptist Church, Inc  
UNITED Church  
Wesley United Methodist Church

### Cleaning - Industrial & Commercial

City Wide Facility Solutions Delaware  
Mid-Atlantic Facility Services, LLC  
Office Pride Commercial Cleaning Services of Dover  
Priority Pro Wash

### Cleaning- Residential

JAYRO INC  
The Maids in Kent County

### Coffee - Products/Services

The House of Coffi

### Commercial Leasing

Carroll Properties, LLC  
JBA Greentree Properties LLC  
KRM Development Corporation

### Communication Services

BSD Enterprises  
Heritage Sports Radio Network LLC  
Magnum Electronics, Inc.

### Community Program

Delaware Crime Stoppers

### Computer Repair & Services

Bob Johnsons Computer Stuff, Inc  
Secure Data Computer Solutions, Inc.

### Computer Sales & Training

SUMURI LLC

### Construction

George & Lynch, Inc.\*  
Pierce Fence Company, Inc.\*  
Carpenter Contractor Trust  
Delaware Contractors Association  
Delmarva Pole Buildings  
Lighthouse Construction, Inc.  
Richard Y. Johnson & Son, Inc.  
Teal Construction, Inc.

### Construction Equipment

Burke Equipment Company  
Iron Source Durante Rentals LLC

### Construction Equipment

Burke Equipment Company  
Iron Source Durante Rentals LLC



**Construction Management**

Kent County Traffic Control  
MNTN Construction

**Consultants**

Environmental Alliance Inc.  
Unity Solutions  
Goeins Williams Associates Inc.  
Ocean Marine Nav Inc.  
Robert W. Rescigno, Ed.D, Collaborative Consulting, LLC

**Contractors-General**

Brooks Machines  
Good Company Handyman LLC  
Sunnyfield Contractors, Inc.  
W.D. Pressley, Inc.  
Willow Construction  
Yencer Builders, Inc.

**Copiers & Copy Services**

Affordable Business Systems, Inc.  
Excel Business Technologies  
Staples Copy & Print

**Cosmetics**

Viva La Bee LLC

**Counseling**

Clyde W. Floyd\*  
CCG - Concerted Care Group

**Dental Care**

Alpine and Rafetto Orthodontics  
Care First Dental Team - Robert R. Coope, DDS  
Family Dental Associates  
Louie Pediatric Dentistry  
Smyrna Pediatric Dentistry

**Dermatology**

Connolly Dermatology  
SunWise Family Dermatology & Surgery

**Disability Services**

Choices for Community Living - Delaware  
KenCrest

**Dry Cleaners/Laundry**

Capitol Cleaners & Launderers, Inc.  
Emerald City Wash World, Inc

**Economic Development**

Delaware Community Development Corp  
Delaware Division of Small Business  
Delaware Prosperity Partnership  
Downtown Dover Partnership  
Kent Economic Partnership  
World Trade Center Delaware

**Education & Training**

Leadership Techniques, LLC\*  
Children & Families First  
Delaware Division of Libraries  
Djigui Corporation  
First Tee - Delaware  
Holy Cross High School  
Leadership Delaware, Inc.  
Mark Group Companies LLC  
People's Platform  
POLYTECH Adult Education  
Project SEARCH at Bayhealth  
Zip Code Wilmington

**Educational Services**

Delaware AeroSpace Education Foundation  
Guardian Emergency Training

**Elder care**

Angel's Touch

**Electricians & Electrical Supplies**

ShureLine Electrical\*  
All American Electric Service LLC  
Dover Electric Supply Co., Inc.  
J&B Electrical Services LLC  
Nickle Electrical Companies  
Towles Electric Inc.

**Embroidery**

Actors Attic Embroidery Division

**Emergency Response Provider**

Fireside Partners, Inc.

**Employee Benefits**

Delmarva Benefit Group

**Energy Consultant**

Affinity Energy Management

**Engineering & Construction Management****Century Engineering, LLC, A Kleinfelder Company\***

KCI Technologies, Inc.  
Landmark Science and Engineering  
Mountain Consulting Inc.

**Entertainment & Recreation****Harrington Raceway & Casino, Inc.\***

Dover Motor Speedway\*  
The Delaware State Fair, Inc.  
Dover Skating Center  
Flight Club Uncorked  
Funfull  
Smyrna Opera House  
Top Spin Productions DJ and Photobooth Services

**Entertainment Production**

Affinity Entertainment DE LLC

**Environmental Services**

Miller Environmental Group Inc

**Event Planning**

Boujee Babes  
Esperanza Events & Consulting LLC  
Sunnybrae Mansion Farm  
The Hive on Loockerman

**Farm Equipment**

Taylor & Messick, Inc.

**Farm Market**

Fifer's Farm Store & Kitchen

**Financial Planning/Investments****B.I.G. Investment Services**

First Command\*  
Garner Group Financial, LLC\*  
Merrill Lynch Wealth Management -  
Connell & Associates\*  
Primerica Financial Services - Erlene George\*  
Black Diamond Financial Solutions, Inc.  
CSG Financial  
Edward Jones - Jim Brady

Edward Jones Investments - Christopher  
Smith, CFP®  
Hill Financial Solutions  
Key Advisors Group, LLC  
Principal

**Fire Protection Services**

American Fire Protection, LLC  
BFPE INTERNATIONAL Fire, Safety & Security

**Fitness Centers / Personal Trainers**

CNU Fit, LLC\*  
Club Fitness Dover  
Fears Boxing Club and Fitness

**Florists**

Jen-Mor Florist\*

**Food Service/Products/Vendors**

HAASS' Family Butcher Shop  
Passanantes Home Food Service  
Shore Smoke Seasonings

**Food Trucks**

Shay's Seafood & Soul\*  
Kona Ice of Dover  
S&T Southern Smokehouse BBQ & Delights  
The Missing Piece-Food Trailer  
Travelin' Tom's Coffee of Dover  
Two Bay Twists, LLC

**Fuel, Oil & Gas**

Service Energy / Poore's Propane

**Funeral Services**

Torbert Funeral Chapel  
Trader Funeral Home, Inc.

**Furniture**

Johnny Janosik, Inc.

**Gifts**

Delaware Shoppes

**Glass & Mirror**

GoGlass\*

**Golf & Country Club**

Jonathan's Landing\*  
Maple Dale Country Club

**Government**

City of Dover  
City of Harrington  
DE Advisory Council on Career and  
Technical Education  
Delaware Department of State  
Delaware Employer Support of the Guard  
& Reserve  
Delaware National Guard  
Governor John Carney  
Kent County Levy Court  
Kent County Sheriff  
Lt. Governor Bethany Hall-Long  
Office of the State Treasurer  
Office of U.S. Congresswoman Lisa Blunt  
Rochester  
Office of U.S. Senator Chris A. Coons  
Office of U.S. Senator Thomas R. Carper  
Representative Bryan W. Shupe  
Representative Charles S. Postles, Jr.  
Representative Jeffrey N. Spiegelman  
Representative Jesse R. Vanderwende  
Representative Kerri Evelyn Harris  
Representative Lyndon D. Yearick

Representative Sean M. Lynn  
Representative W. Shannon Morris  
Representative William Bush  
Representative William J. Carson  
Senator David G. Lawson  
Senator David L. Wilson  
Senator Eric Buckson  
Senator Kyra L. Hoffner  
Senator W. Charles Paradee  
Town of Camden  
Town of Cheswold  
Town of Smyrna

**Graphic Design**

Splash! Designworks\*  
Blue Dogg Design

**Gymnastics**

Stick It! Gymnastics

**Hair & Nail Services**

My Salon Suite  
Rene' DeLyn Hair Designs

**Health & Wellness**

First State Webfooters\*  
Smyrna Nutrition\*  
Aetna  
Atlantic Apothecary, Inc.  
Breakthrough Personal Coaching &  
Wellness  
Caribbean Bush Tea LLC  
DelMarVa Acupuncture & Wellness Center  
Dover Jazzercise Fitness Center  
Ice House: Wellness + Community  
Milford Wellness Village  
SaVida Health  
Transformations Center for Weight Loss, LLC

**Health Services****PAM Health Rehabilitation Hospital of Dover**

Bayhealth Medical Center\*  
Eden Hill Medical Center\*  
Alternative Solutions  
Blood Bank of Delmarva, Inc.  
ClearCaptions  
Coastal Medical Center  
Delaware Health Information Network  
Delaware Hospice, Inc.  
Delaware Imaging Network  
Delaware Prostate Cancer Coalition  
Dover Behavioral Health System  
Gracious Heart Nursing Services, LLC  
Nephrology Associates, PA  
NFN Brain Connections  
Silver Lining Home Healthcare  
United Healthcare  
Village Primary Care  
Westside Family Healthcare

**Hearing Aids**

Brandywine Hearing Center featuring  
Beltone

**Heating & Air Conditioning**

Air Temp Solutions  
Armstrong HVAC LLC  
Atlantic Refrigeration & Air Conditioning, Inc.  
Barkley Heating & Air, LLC  
Big Red Services



Schlosser & Associates Mechanical Contractors

### Home Health Care

Americare Home Solutions\*  
Lean On Me Caregiving, LLC\*  
RRW Inc Home Instead Care\*  
Zeabe\*

AccentCare  
Always Best Care - Delaware  
Bayada Hospice  
Royal Home Care Services LLC

### Home Improvements

A-FAB Property Professionals  
All Around Maintenance, LLC  
Bumble Bee Construction  
Coastal Bath Company  
Ferris Home Improvements, LLC  
Ken Stockslager & Son, Inc.  
Precision Garage Door of Delaware  
Quality Garage Doors & Gutters  
Renewal by Andersen  
Universal Assembling Enterprise LLC

### Homeless Shelter

Central Delaware Housing Collaborative  
Dover Interfaith Mission for Housing

### Hotels/Motels/Accommodations

**Residence Inn by Marriott, Dover\***  
Bally's Dover Casino Resort\*  
Atlantic Sands Hotel & Conference Center  
Best Western Galaxy Inn  
Brighton Suites Hotel  
Capital Inn of Dover  
Comfort Inn - Rehoboth  
Comfort Inn & Suites Dover  
Comfort Suites - Dover  
Fairfield Inn by Marriott, Dover  
Hampton Inn - Dover  
Hampton Inn - Milford  
Hilton Garden Inn  
Holiday Inn Express  
HOME 2 Suites / Axia Management  
Eagle Hospitality Group, LLC- MainStay Suites  
Sleep Inn and Suites  
Springhill Suites by Marriott Frederica

### Housing Information

Dover Housing Authority  
Visions of Hope HM, Inc.

### Human Resource Services

DelMarVa SHRM  
Insperity

### Ice Cream

Tre Sorelle Dolce Ice Cream & Mini Golf\*  
Trendy Blendz

### Incorporating Service

Corp1, Inc.  
Incorporating Services, Ltd.  
PARASEC - PARACORP Inc.

### Individuals

Judy Diogo\*  
Janie Libby\*  
Mishoe\*  
George Bailey  
Sandy Dale  
Richard Downes

Emmons  
Ray Hall  
Dan Mikkelson  
Peter A. Oldziej  
Ronald B. Outten  
MGeneral Frank Vavala  
Vendetti

### Information Security

We Know Cyber Inc.

### Information Technology

BDK, Inc.  
IMPACT Technology Group  
Progressive Software Computing Inc - PSCI  
Wagamon Technology Group, LLC.  
Xpress Computer Systems

### Insurance

A to Z Insurance  
Allstate Alisha Parker  
Avery Hall Insurance Group  
Carey Insurance Group  
Conner Strong & Buckelew  
Delaware Department of Insurance  
L&W Insurance Agency  
Lindsay Dougherty State Farm Agent  
Regulatory Insurance Services, Inc.  
Roberts Insurance, Inc.  
State Farm  
State Farm Insurance - Bennett Ins. Agency Inc.  
Transamerica Agency Network  
Weiner Benefits Group

### Insurance - Commercial

**Pratt Insurance, Inc.**  
Commercial Insurance Associates, Inc

### Insurance - Health

Highmark Blue Cross Blue Shield Delaware\*  
Sack Health Benefit Advisors, LLC\*  
Allen Ins. Assoc Inc. t/a Allen Ins. Group  
Delaware Valley Medigap  
FrettNet LLC

### Interior Decorators & Designers

Decorating Den Interiors-Deanna Kovach  
& Janice Hinzman

### Internet Solutions

Comcast  
Telepathy Networks, LLC

### Investigative Services

Workman Investigations, LLC

### Janitorial Supplies

State Janitorial Supply Co.

### Jewelry

Sayers Jewelers & Gemologists Inc.\*  
Jeweler's Loupe  
Knights Fine Jewelry Ltd.  
Tanzy - Jewelry & Accessories Boutique

### Kitchen & Bath

Stone Nation, Inc.\*

### Landscaping

G's Down Too Earth Landscaping  
Homestead Gardens  
Todd's Lawn Care Service

### Law Firms

Wolfe & Associates  
**Legal Services**  
EB5 Investors  
Law Office of Karen Y. Vicks, LLC

### Libraries

Dover Public Library  
Friends of the Duck Creek Regional Library

### Lobbyists

C.S. Kidner Associates/Capitol Strategies\*  
The Willis Group, LLC\*

### Lottery

Delaware State Lottery

### Mailing Services- Domestic/International

Mail Movers  
The UPS Store - Smyrna  
USA Fulfillment

### Manufactured Housing & Development

First State Manufactured Housing Assoc.

### Manufacturers

ally Nutra LLC  
Barrette Outdoor Living  
Independent Metal Strap Co., Inc.  
Mohawk Electrical Systems, Inc.

### Manufacturers and Processors

**Kraft Heinz Company**  
Edgewell Personal Care  
HandyTube  
Procter & Gamble

### Marketing

High Ground Solutions\*  
Hook PR & Marketing\*  
IMD4\*  
AHDTV Network  
Aloysius Butler & Clark  
Welcome Wagon

### Martial Arts

Kaizen Karate Academy

### Massage Therapist

The Divine Zone LLC\*

### Medical

A Peaceful Place Integrated Care  
American Kidney Care of Dover  
Clearway Pain Solutions  
Eye Specialists of Delaware  
Eye Specialists of Delaware - Milford  
The Center at Eden Hill

### Medical Facility

Best Buds  
Camden Walk In  
Harbor Healthcare & Rehabilitation  
Mammogram Now

### Medical Supplies

TidalHealth Lifeline

### MediSpa

Bella MediSpa  
Remedy Restore Aesthetics, LLC

### Mental Health Services

A Center for Mental Wellness, Inc.  
Kairos Embrace Behavioral Health  
NorthNode Group Counseling

### Military Housing

Hunt Military Communities

### Military Services

512th Airlift Wing  
Air and Space Forces Association Galaxy Chapter  
Dover Air Force Base  
Military Officers Association of America -Dover Chapter  
US ARMY Dover Recruiting Center

### Monuments & Mausoleums

William V. Sipple & Son, Inc.

### Mortgage Companies

Pike Creek Mortgage Services, Inc.\*  
Clear Modern Mortgage  
Primary Residential Mortgage, Inc.

### Mortgage Loans - Commercial & Residential

Lower, LLC  
Miller Mortgage Group at AnnieMac  
Home Mortgage

### Moving & Storage

SSW Moving & Junk Removal  
Two Men And A Truck

### Museums

Air Mobility Command Museum Foundation  
Biggs Museum of American Art  
Delaware Agricultural Museum and Village  
Delaware State Police Museum

### Musicians

Delaware Choral Society  
Joe Baione Music

### Networking

Master Networks

### New Home Builders / Construction

C & M Custom Homes

### Newspapers & Magazines

**Independent Newsmedia, Inc., USA\* / Daily State News**

APG Media of Chesapeake (Adams Publications Group)  
Delaware Today Magazine  
Dover Post Co.  
Kent County Women's Journal  
Morning Star Publications / The Business Report  
Southern Delaware Explorer Magazine  
The Open Door

### Non-Profit Organization

Central DE Habitat for Humanity\*  
Delaware Breast Cancer Coalition, Inc.\*  
United Way of Delaware\*  
AARP Delaware  
Alzheimer's Association - Delaware Valley Chapter  
American Legion Post 14 & Station 64  
Big Brothers Big Sisters of Delaware  
Greater Dover Boys & Girls Clubs  
Smyrna-Clayton Boys & Girls Clubs  
Braven  
Camden Wyoming Rotary Club  
Cancer Support Community Delaware  
CenDel Foundation



Convention of States Delaware  
 Correctional Officers Assoc. of Delaware  
 Delaware Alliance for Nonprofit Advancement  
 DE TURF Sports Complex  
 Delaware Assoc. for the Education of  
 Young Children  
 Delaware Community Foundation  
 Delaware Farm Bureau  
 Delaware Standardbred Owners Association, Inc.  
 Dover / Kent County MPO  
 Dover Capital City Rotary  
 Easterseals DE & MD's Eastern Shore  
 Energize Delaware  
 First State Community Action Agency  
 Food Bank of Delaware  
 Home Builders Association of Delaware  
 Independent Resources, Inc.  
 Kent County Republican Committee  
 Kent Sussex Leadership Alliance  
 Kent-Sussex Industries, Inc.  
 Meals On Wheels Delaware  
 NeighborGood Partners, Inc.  
 NEW DAY Pregnancy Care Center  
 People's Place  
 Pressley Ridge  
 Read Aloud Delaware  
 Ronald McDonald House of Delaware  
 The Art Society at Loblolly Acres  
 True Access Capital  
 USO Delaware  
 Wilmington Hope Commission  
 YMCA Dover

### **Nursing Care**

Bay Terrace Rehabilitation and Healthcare Center  
 Cadia Capitol  
 Pinnacle Rehabilitation & Health Center

### **Optometrists & Optical Products**

Simon Eye

### **Organizations**

Delaware Motor Transport Assn., Inc.  
 Jobs for Delaware Graduates

### **Painting**

CertaPro Painters of Delaware  
 Snow's Painting Service, LLC

### **Pediatric Care**

Growing Bones Pediatrics + Neuromuscular  
 Orthopaedic In

### **Pest/Termite Control Services**

Diamond State Pest Control, LLC\*  
 JEM Pest Solutions Inc.

### **Pets- Services & Supplies**

Beaverdam Pet Food, Inc.  
 Forrest Avenue Animal Hospital  
 Jax n Daisy, Inc.

### **Photographers**

C.M. Baker Photography

### **Physical Therapy**

NovaCare Rehabilitation

### **Physicians & Surgeons**

Bright Future Pediatrics  
 Dedicated to Women

### **Plumbers & Plumbing Supplies**

JDM No. 1 Plumbing, LLC

Price Plumbing LLC, dba MCPHAE TRADE  
 SERVICES

### **Podcast**

The Creative Side of Things Show

### **Pole Building**

Diamond State Pole Buildings

### **Pools & Hot Tubs**

Dover Pools

### **Promotional Products & Services**

Always Advertising, Inc.\*  
 Instant Imprints of Delaware\*  
 American Solutions for Business

### **Radio Stations**

Delaware Public Media  
 Forever Media Inc.  
 IHeartMedia  
 PC ChristianRadio

### **Real Estate**

#### **R & R Commercial Realty, Inc**

Dowding Resource Group\*  
 First Class Properties\*  
 LakeView Realty, Inc.\*  
 Burns & Ellis Realtors  
 Delaware Association of REALTORS®  
 Harrington Realty, Inc.  
 Keller Williams Realty Central Delaware  
 Kent County Association of REALTORS®  
 Leander Lakes, LLC  
 Liza Orlando, Realtor - Keller Williams Realty  
 Loft Realty  
 McGinnis Commercial Real Estate Co.  
 NextHome Preferred  
 Patterson Schwartz  
 Remax Horizons  
 The Eduruke Group  
 The Moving Experience  
 Ward & Taylor, LLC

#### **Real Estate Commercial & Residential**

Bryan Realty Group  
 The Emory Hill Companies  
 The Rivera Group of Keller Williams Realty

#### **Recreational Vehicle Dealers**

Parkview RV Center

#### **Recycling**

Delaware Solid Waste Authority

#### **Rental Equipment**

Collective Event Group  
 Diamond State Party Rental

#### **Restaurants**

Auntie Anne's Soft Pretzels  
 Bangkok Thai Cuisine Corp  
 Benvenuto, LLC  
 Bibi's Brunch  
 Brick Works Brewing & Eats  
 Capriotti's of Dover, Inc.  
 Chaiyo Sushi & Thai Cuisines  
 Chaiyo Sushi & Thai Cuisines - Camden  
 Cheddar's Scratch Kitchen  
 Clean EatZ of Dover  
 Cool Springs Fish Bar & Restaurant  
 Grey Fox Grille  
 Grotto Pizza - Dover

JP's Wharf LTD  
 Le Boulevard Bar & Grill  
 LongHorn Steakhouse  
 McDonald's  
 Mike & Mel's Family Restaurant  
 Mission BBQ  
 Rail Haus  
 Restaurant 55 / DDEGE Investments, LLC  
 Roma Italian Restaurant  
 Attento, LLC dba Royal Prime  
 Sambo's Tavern  
 Select Pizza and Grill  
 Select Pizza and Grill Smyrna  
 Texas Roadhouse  
 The Brick-Wood Fired Eats  
 Tomeka's Homestyle Eatery  
 Tropical Smoothie Cafe Camden DE  
 Veronica's Pizzeria  
 Vincenzo's Italian Restaurant & Gelato

#### **Retail**

Celestial Shoes\*  
 Scentsy\*  
 Special Touch Card Creations\*  
 Agape Body Piercings  
 Byler's Store, Inc.  
 Chicka and Co  
 Chick's Saddlery  
 Cosmic Smoke Vape Ventures, LLC  
 Dover Army Navy Store, Inc.  
 Eagle Nail & Tool Supply of Milford LLC  
 Henlopen Candle Works  
 Maxed Out Vape  
 OEO Energy Solutions  
 Rely Tool Supply, LLC  
 Sam's Club  
 Suds and Company  
 Walmart DC 7034

#### **Retirement & Elder Care Communities**

CompleteCare @ Silver Lake

#### **Roofing**

**G. Fedale - Lewes\***  
**G. Fedale - Wilmington\***  
 Bright Side Roofing\*  
 Biddle's Home Solutions LLC  
 Instant Roofer  
 Miller's Roofing & Coatings, LLC

#### **Schools, Colleges & Education**

Delaware State University\*  
 Delaware Technical Community College -  
 Terry Campus\*  
 Academy of Dover Charter School  
 Caesar Rodney School District  
 Capital School District  
 First State Military Academy (FSMA)  
 POLYTECH School District  
 Positive Outcomes Charter School  
 Smyrna School District  
 The Elizabeth W. Murphey School, Inc.  
 University of Delaware  
 Wilmington University

#### **Security Systems**

Advantech Incorporated

#### **Senior Centers**

Harvest Years Senior Center  
 Modern Maturity Center, Inc.

### **Senior Services**

Delaware Senior Medicare Patrol  
 Harmony at Kent  
 PACE Your LIFE  
 Retired & Senior Program of Kent County  
 WeCare Services

### **Septic**

Pirana of Delaware  
 Septic Masters

### **Shoes**

Red Wing Shoes

### **Shopping Malls**

Dover Mall LLC

### **Signs**

Kent Sign Co.

### **Staffing & Recruiting**

Adecco Staffing  
 Express Employment Professionals  
 PLACERS / PLACERS Professional

### **State Agencies**

Delaware D.N.R.E.C.  
 Delaware Dept of Labor Div of Vocational  
 Rehabilitation  
 Delaware Division for the Visually Impaired  
 Delaware Health and Social Services  
 Delaware Office of Management and Budget  
 Delaware River & Bay Authority  
 Delaware State Housing Authority

### **Sunrooms**

Quality Builders Inc.

### **Surety Bond Broker**

The Bond Agency

### **Taxi / Limousine Service**

Executive Transportation Inc.

### **Telecommunication Services**

Technical Broadcast Solutions, Inc.  
 T-Mobile - Camden  
 T-Mobile - Dover

### **Television Stations**

WBOC & FOX21

### **Therapeutic Services**

Beyond Speech Therapy, LLC  
 Central Delaware Speech Language Pathology  
 On Point Therapy Services & Wellness

### **Tourism**

First State Heritage Park\*  
 Cape May County Dept. of Tourism  
 Kent County Tourism Corporation

### **Towing**

McKinney's Towing & Road Service

### **Transportation**

Delaware Transit Corp/DART First State\*  
 ASAP LOGISTICS  
 Avelo Airlines  
 Dawson Bus Service, Inc.  
 Delaware Department of Transportation  
 GOGO Charters - Dover  
 Koski Enterprises Inc.

### **Trash Removal Service**

Casella Waste Systems



**Travel Agencies**

AAA Mid-Atlantic  
Blissful Blythe Travels  
Epic Worldwide Travels LLC

**Uniforms**

A & H Uniforms  
Capitol Uniform & Linen Service

**Utilities****Chesapeake Utilities Corp.\***

Delaware Municipal Electric Corporation  
- DEMEC\*  
Artesian Water Company, Inc.  
Delaware Electric Cooperative, Inc.  
Delmarva Power  
Tidewater Utilities, Inc.

**Utility Trailers**

Delwood Trailer Sales, Inc.

**Veterans Services**

Friends of Delaware Veterans Inc.  
Service Source

**Video Production**

PJVideoFilm.com  
Xhibit Reality

**Water, Mold, Fire Restoration**

DiBiaso's Cleaning & Restoration Services Inc.\*  
All Restored Inc.  
BELFOR USA Group Inc.  
Healthy Home Solutions  
SERVPRO of Dover/Middletown

**Waterproofing Services**

Basement Waterproofing Specialists

**Web Design, Internet Consulting**

myInstant Team\*  
Delmarva Digital  
Lucid Growth LLC

**Weddings**

King Cole Farm  
Pizzadili's Winery

**Window Treatments**

Accurate Tint And Graphics  
BILL's Blinds & Shades Consulting

**Winery**

Harvest Ridge Winery

# THANK YOU to our

# 2024

# Program Event & Sponsors

Bold indicates a Cornerstone Member \* indicates multiple sponsorships

AARP Delaware  
Aetna  
AHDTV Network  
Air and Space Force Association Galaxy Chapter\*  
Allen Ins. Assoc Inc. t/a Allen Ins. Group\*  
Always Advertising, Inc.\*  
Artisans' Bank\*  
Bally's Dover Casino Resort\*  
Bavarian Bakery & Deli  
Bayhealth Medical Center\*  
BBSI- Dover\*  
Bibi's Brunch  
Big Brothers Big Sisters of Delaware  
**B.I.G. Investment Services\***  
Biggs Museum of American Art  
Bright Side Roofing  
Burke Equipment Company  
Burns & Ellis Realtors  
C.S. Kidner Associates/Capitol Strategies\*  
Carpenter Contractor Trust  
CenDel Foundation  
**Century Engineering, Inc.\***  
**Chesapeake Utilities Corp.\***  
City of Dover\*  
Clearway Pain Solutions\*  
CNU Fit, LLC\*  
Coastal Bath Company\*  
Crumb! Dover  
**Daily State News / Independent Newsmedia, Inc., USA\***  
Delaware Agricultural Museum  
Delaware Crime Stoppers  
Delaware Department of Health and Social Services\*  
Delaware Department of Insurance  
Delaware Division of Small Business  
Delaware Electric Cooperative, Inc.\*  
Delaware Municipal Electric Corporation - DEMEC\*  
Delaware Solid Waste Authority  
Delaware State University\*  
Delaware Technical Community College  
Delmarva Power\*  
Del-One Federal Credit Union

Del-One Federal Credit Union  
Del-One Federal Credit Union  
Del-One Federal Credit Union  
Del-One Federal Credit Union  
Dover / Kent County MPO  
**Dover Federal Credit Union\***  
Dover Jazzercise Fitness Center  
Dover Motor Speedway\*  
Dover Pools  
Dover Post  
Dowding Resource Group\*  
Excel Business Technologies  
Faw Casson\*  
FCCB - First Citizen Community Bank  
Fears Boxing Club and Fitness  
Fifer's Farm Store & Kitchen  
First Command  
First State Webfooters  
Forrest Avenue Animal Hospital  
**G. Fedale\***  
George & Lynch, Inc.\*  
Hampton Inn - Milford  
**Harrington Raceway & Casino, Inc.**  
High Ground Solutions\*  
Highmark Blue Cross Blue Shield Delaware\*  
Hilton Garden Inn\*  
Hodges Accounting & Tax Services  
Horty & Horty, PA- Douglas R. Phillips\*  
Hunt Military Communities  
i.g. Burton & Co., Inc.  
Independent Metal Strap Co., Inc.  
Instant Imprints of Delaware  
JAYRO INC  
Kent County Levy Court  
Kent County Tourism Corporation\*  
**Kraft Heinz Company**  
L&W Insurance Agency  
Leadership Techniques, LLC  
Lean On Me Caregiving, LLC  
Leander Lakes, LLC  
Lighthouse Construction, Inc.  
M&T Bank - Dover Main  
MABCF LLC dba On Point Therapy Services & Wellness  
Merrill Lynch Wealth Management - Connell & Associates\*

Mi Mutual Mortgage  
Military Officers Association of America -Dover Chapter\*  
Mountain Consulting Inc.  
NKS Distributors, Inc.  
NovaCare Rehabilitation  
**PAM Health Rehabilitation Hospital of Dover**  
Parkview RV Center  
Payroll Management Assistance  
Pepsi Bottling Ventures of Delmarva\*  
Pierce Fence Company, Inc.  
Pike Creek Mortgage Services, Inc.  
Pinnacle Rehabilitation & Health Center  
Pirana of Delaware  
**Pratt Insurance, Inc.**  
Price Plumbing LLC, dba MCPHAE  
TRADE SERVICES  
Procter & Gamble  
**R & R Commercial Realty, Inc**  
Rail Haus  
Regulatory Insurance Services, Inc.  
**Residence Inn by Marriott, Dover\***  
Sam's Club\*  
Sha Scrubz & Apparel  
Shore United Bank\*  
Suds and Company  
The Art Society at Loblolly Acres  
The Hive on Loockerman  
The House of Coffi  
The Malmberg Firm, LLC  
The Moving Experience  
The Willis Group, LLC\*  
Tidewater Utilities, Inc.\*  
Tre Sorelle Dolce Ice Cream & Mini Golf  
Two Bay Twists, LLC  
UNITED Church  
United Healthcare  
Wagamon Technology Group, LLC.  
Weiner Benefits Group\*  
Welcome Wagon  
Wesley United Methodist Church  
Westside Family Healthcare  
Wilmington University\*  
Woody's On Wheels

## Interested in Sponsoring a CDCC Event?

Find more details on our website [www.cdcc.net](http://www.cdcc.net) at the "Sponsor A Chamber Event" link under the "Events" header.



# The CDCC Resource Guide: An Opportunity for your Business to Shine!

Reservations are now being accepted for exclusive advertising in the Central Delaware Chamber of Commerce's (CDCC) 2025 – 2026 Resource Guide.

As marketing options become more and more prevalent, it has become challenging for businesses to reach their prospective customers with an effective advertising tool.

One powerful avenue for local businesses to showcase their products and services is through the CDCC's annual Resource Guide. With the well-respected and trusted reputation of your Chamber as the publisher of this guide, it has always been a must-read for locals, newcomers and visitors since its introduction more than 30 years ago.

The 2025-2026 edition will uphold the tradition of offering a unique opportunity for businesses to connect with the community, enhance visibility, and expand their brand.

The CDCC plays a pivotal role in fostering economic growth and community development in the region every day in a variety of ways. As a trusted advocate for businesses for over 100 years, the CDCC serves as a catalyst for collaboration, networking, and resource-sharing among its members. The annual



Resource Guide is a tangible representation of your Chamber's commitment to supporting local enterprises and showcasing trustworthy member businesses in the best way.

Here are some reasons why we believe it would be beneficial for you to showcase your business in the 2025 -2026 CDCC Resource Guide:

1. **Community Visibility –** Our Resource Guide serves as a comprehensive directory for businesses in Central Delaware, making it an invaluable resource for residents and visitors alike. By placing an advertisement in the guide, businesses can elevate their visibility within the community, ensuring that their products and services are prom-

inently featured in the 8,000 copies distributed to high-traffic locations throughout Central Delaware. In addition, the Resource Guide is posted on our recently-redesigned website at [www.cdcc.net](http://www.cdcc.net).

2. **Credibility and Trust -** Associating your business with the CDCC lends an air of credibility and trust. The chamber is regarded as a reliable source of information, and being featured in the Resource Guide signals to potential customers that your business is an active and reputable member of the local business community.

3. **Longevity and Shelf Life -** Unlike digital advertising that may get lost in the constant stream of online content, the Resource Guide has a longer shelf life. It serves as a lasting reference for individuals seeking local businesses and services, providing sustained exposure for your advertisement throughout the entire year.

Now that you've read a glimpse of the advertising benefits available with this publication, it is time to begin thinking about how you and

your company can make the most of your advertising space.

A tip from the CDCC includes writing an interesting headline and clear messaging, and don't forget to use high-quality, attention-grabbing visual elements. Make sure your brand stands out and communicates key information effectively.

We will have the publication – **2025-2026 CDCC Resource Guide** – available for distribution by July 2025. We are offering a special package to the first 35 half or full-page advertisers – those businesses will receive an ad on our Dover/Kent County map (10,000 copy distribution) for free!

***Our business community is a vibrant and essential part of Central Delawareans' quality of life – please consider showcasing your business for the betterment of the community - for an entire calendar year! For more information, pricing, or to reserve a spot in our Resource Guide, contact Heather Cregar at the CDCC office (302) 734-7513 or [marketing@cdcc.net](mailto:marketing@cdcc.net) today!***

## CDCC Board of Directors Assume New Assignments

The CDCC Board of Directors is a volunteer organization comprised of representatives from 20 member businesses. The Board of Directors oversees the work of the CDCC and serves as the policy-forming branch of the Chamber. Board members gather monthly to offer guidance and support for the work of the Chamber. We are grateful for our board members, their gift of time and talent, and their often behind-the-scenes kind of work!

As you probably read, we recently said “goodbye” to Konrad LaPrade, our first vice chair of the board, when he and his family relocated to Indiana. With his departure, several new appointments were needed. The first vice chair position could also be called the “chair-elect” as that person will assume the role of board chair at the beginning of the next term, which in this case, will be July 1, 2025.

Javier Santana, who was serving as our Vice Chair of Economic



**Javier Santana**



**Janell Upton**



**Hassan Najjar**

Development, was appointed by our current board chair, Dana Wattay, to assume the role of first vice chair and will become the chair as the gavel is passed just prior to July 1st. Javier is the founder and chief creator at High Ground Solutions and has served on the board since July of 2022. Prior to that, he served for many years as an active member of the CDCC's Marketing Committee. As a small business owner and a lifetime

marketer, his leadership will bring a wealth of knowledge to this appointment, especially regarding the best way to tell the Chamber's story! We are excited to welcome him to this new position!

In addition, we are excited to welcome Janell Upton, CEO of Dover Federal Credit Union and CDCC Board Member since March of this year, into the role of Vice Chair of Economic Development. Finally,

Hassan Najjar, Executive Director of the Biggs Museum, has agreed to join our board as our newest board member at large.

We are grateful to these volunteers for assuming their new roles and bringing their experiences and knowledge to our board. Our entire board of directors represents a wonderful mix of backgrounds, skills, and talents that create an amazing synergy which spawns creativity and camaraderie. While the work of the board is often done “behind the scenes,” the fruit of their labor is seen in the vibrant work of the CDCC as it continues to serve as THE essential resource for the development of businesses in Kent County.





# Ribbon Cuttings

## CDCC Joins Bayhealth for a Ribbon Cutting

DOVER, DE – The Central Delaware Chamber of Commerce (CDCC) hosted a Ribbon-Cutting Ceremony for Bayhealth's newly remodeled spaces and new services at the Bayhealth at Blue Hen Medical Center Facility on Wednesday, Dec. 9th outside of Unit C at 665 N. Bay Road, Dover. Chamber members and friends joined Michael Ashton, Vice President of Operations and Administrator for the Bayhealth Sussex Campus, and the Bayhealth team after the ribbon cutting for light refreshments and a tour of the facility.

This remodeled space includes the new Bayhealth Walk-in Medical Care, Blue Hen and Bayhealth Outpatient Center, Blue Hen and Bayhealth Occupational Health, Bayhealth Outpatient Rehabilitation (physical therapy, occupational therapy, and speech therapy), as well as various Bayhealth Medical Group practices for primary care, endocrinology, gastroenterology, and pulmonology. The Bayhealth Neurology practice has also moved to the new space from its previous Dover locations.



Bayhealth has had a presence at the Blue Hen Corporate Center since 2003. With a goal of improved access and one-stop availability of services in mind, Bayhealth invested in securing and repurposing additional spaces at the Blue Hen site to reimagine them as a central location for health care services for the people of Kent County.

Bayhealth has been a part of our community since 1927 when Kent General Hospital in Dover first opened. It has continuously grown and evolved over the years to best meet the needs of their communities. Bayhealth provides a range of comprehensive medical care and services at our two hospital campuses, many satellite facilities offering emergency and urgent care, walk-in care, diagnostic imaging and testing, laboratory, outpatient rehabilitation and other



services, and employed physician practices encompassing a variety of specialties.

Bayhealth has a strong commitment to serving the communities in central and southern Delaware. In Fiscal Year 2023, Bayhealth recorded 107,911 emergency department visits, 18,022 patients admitted to beds, 2,545 births, and provided more than \$12 million in unreimbursed care to patients. Beyond the medical care they provide, their community outreach efforts meet neighbors where they are throughout Kent and Sussex counties. Through their mobile health unit and many

community activities and sponsorships, they offer health screenings, health education opportunities, and work alongside community organizations to address gaps in care and health disparities.

*Anyone interested in learning more about Bayhealth can visit them online at <https://www.bayhealth.org/>. Please join Bayhealth and the Central Delaware Chamber of Commerce in celebrating the newly remodeled spaces and new services at the Bayhealth at Blue Hen Medical Center Facility.*

## New Member Spotlights

### Introducing Tanzy Jewelry Boutique

Your Central Delaware Chamber of Commerce (CDCC) is happy to highlight one of our newest members, the Tanzy Jewelry Boutique owned by Claudine Wega. Claudine's business offers an exquisite line of jewelry and accessories that blend subtle sophistication with timeless and contemporary designs perfect for any occasion. These pieces are meant to be more than accessories; they are symbols of empowerment and grace, designed to accompany the wearer on their journey.

The Tanzy Jewelry Boutique uses only the finest materials to create jewelry and accessories that stand the test of time. Each piece undergoes rigorous quality checks to ensure it meets the company's high standards, to provide enduring beauty.

The Tanzy line of fine jewelry includes an impressive selection of earrings, bracelets, necklaces, brooches, and rings in beautifully polished sterling silver and gold-plate. Some styles also feature dazzling gemstones, pearls or glass beads. From unique designs to understated



classic looks, you'll be sure to find several pieces to suit your everyday or special occasions fashions.

To compliment your fashion style, the Tanzy Jewelry Boutique also offers accessory pieces including fabric bags and silk scarves. The bags are a great grab-and-go accessory for those days when you have a few extra things to carry throughout the day. The silk scarves are square, which makes them so versatile you can tie them on your handbag, around your neck or in your hair.

Even if you aren't in the market for jewelry or scarves yourself, Claudine

reminds us that Valentine's Day and Mother's Day are not too far off, so why not visit their website and make your gift purchase sooner rather than later?! If you aren't sure what to get that special someone in your life, the Tanzy Jewelry Boutique offers gift cards starting at \$25 and can be shipped directly to your gift recipient. This is a great way to elevate your gifting game.

In addition to their unique collection of jewelry, the Tanzy Jewelry Boutique offer a truly unique commitment to creating a positive societal impact – a portion of the proceeds from each item sold is donated for autism research and support services, a cause close to Claudine's heart. Each piece purchased helps tell a story of elegance, purpose, and inclusivity, reflecting the Tanzy dedication to celebrating individuality while giving back to the community.

Claudine was motivated to join the CDCC to connect with like-minded individuals and explore meaningful networking opportunities to grow her business. Claudine explains, "In an increasingly electronic-driven world, I



value the chance to build genuine human connections, foster community relations, and collaborate with others to create a lasting impact."

*If you are looking for a unique piece of jewelry to add to your collection or a gift for someone special, the Tanzy Jewelry Boutique is open online, every day, all day. You can shop their online boutique at [www.tanzyluxgem.com](http://www.tanzyluxgem.com). Please join us in welcoming Claudine and the Tanzy Jewelry Boutique as new members of the CDCC!*



# New Member Spotlights

## Introducing Travelin' Tom's Coffee Truck

The Central Delaware Chamber of Commerce (CDCC) is pleased to welcome Christian Miller's newest food truck business, Travelin' Tom's Coffee Truck, as a new Chamber member!

Travelin' Tom's Coffee Truck sells coffee, tea, and other caffeinated, and non-caffeinated gourmet beverages including signature coffee products, nitro, cold brew, caramel frappe, hot chocolate, energy drinks, lemonades, various flavored teas, iced and frozen lattes and Matcha teas, Tommy Palmer (their version of the Arnold Palmer), refreshers with fresh fruit (a favorite with kids), espresso, ILT nitro energy™, and seasonal flavored beverages such as pumpkin spice, peppermint, and honey blueberry. They also offer dairy-free options with almond milk or oat milk.

Christian Miller is the 21-year-old owner of 3 Kona Ice trucks and now Travelin' Tom's Coffee of Dover (a division of Kona Ice). His food truck adventure all started with signing for his first truck at the age of 18 with a small \$10,000 inheritance from his grandfather (Who died when he was very young). He has now branched out into the beverage industry with his new



coffee truck. "It's so exciting!" Christian exclaims, "Who says staying hydrated can't be fun?!"

Travelin' Toms Coffee/Kona Ice are family-owned and operated, and Christian's father Jeff and mother Maggie are his biggest fans and helpers. His teenage sister, Samantha, is trained as a full barista and helps when her schedule allows. Maggie handles all marketing and booking, and Jeff is always out on a truck – just like Christian.

This coffee truck is the perfect addition to any gathering from weddings, festivals and parties to fundraisers, corporate events, meetings, and a variety of other events. The Travelin' Tom's baristas can entertain guests with latte art and brewing techniques, plus the casual vibe of

this interaction can make the event feel more inclusive and fun. Maybe you've enjoyed their coffee at the Capital Holiday Celebration or the Fall Festivals at Fifer's Farm Store & Kitchen? Yummy in a cup!

To say "thank you" to the local community, they also donate a portion of their sales to schools, non-profit organizations, and service events like school football games, festivals, fundraising events, school dances, etc. "We show up and your organization gets a check. It's that simple! Giving back to our local community is built into our business model," Christian explains.

When asked what motivated him to join the CDCC, Christian replied, "Joining with our newest gourmet coffee truck was a natural progression. We are already members with Kona Ice of Dover and over the course of our first year of membership we just couldn't be more pleased with the friendships, new business partnerships, and the way members go out of their way to say hello and help to promote each other. It's like we found home!"



*If you are interested in learning more about Travelin' Tom's Coffee Truck, visit them online at <https://travelintomscoffee.com/>. To book them for your next event, contact them at [millers@travelintomscoffee.com](mailto:millers@travelintomscoffee.com) or 443-726-9050.*

*Please join the CDCC in welcoming Christian's newest business venture Travelin' Tom's Coffee Truck as a member!*

## Introducing Club Fitness

The Central Delaware Chamber of Commerce (CDCC) is pleased to welcome Club Fitness in Dover as a new Chamber member!

Club Fitness is a locally owned fitness center that has provided the Dover community with a place to train since 2004. They offer affordable fitness club memberships for all, no matter your age or fitness level. This includes a wide range of exercise programs, activities, and trained staff to help you accomplish your fitness goals. The Club Fitness programs include a Kids Club, Senior Center, Functional Training room, Olympic Weightlifting, Group Fitness for yoga, Zumba, Pilates and Spin, Women's only, Silver Sneakers and Personal Training.

Club Fitness prides themselves on truly being a "fitness center for all." Assistant General Manager, Cory Lawson, explains, "You can find seniors in our gym training next to future Body Builders! We believe in providing an environment and community that makes everyone comfortable to walk into." To keep Club Fitness a good value, they offer many amenities at an affordable price



point, which Cory describes as "more bang for your buck."

Club Fitness has done a great job of isolating certain amenities. For example, their Senior Room and Women's Only Room are in separate rooms of the gym from the heavy lifting and other areas. This allows those members to train in an area they feel most comfortable in. In addition, their sauna is available for use by all members, and platinum members have 24-hour access Monday through Thursday.

Club Fitness originally opened as a Gold's Gym in 2004 by Rehoboth Beach residents Lisa and Duane Lawson. They saw an opportunity to create a fitness center in Dover and never looked back. In 2010, they switched from the Gold's Gym franchise to Club Fitness LLC. Their son, Cory, is continuing the business with the goal of making Club Fitness

the premier training center in Delaware and working hand in hand with other fitness- and health-related businesses in the Dover area.

When asked what motivated Club Fitness to become a CDCC member, Cory explained, "I want to grow connections as a business operator in Central Delaware. My goal is to meet and create partnerships down the road that will strengthen both Club Fitness and any businesses we partner with. We are open to events being held at the club, participating in 5K races, and marketing other business at ours!"

Another aspect they want to accomplish by joining the CDCC is to get more involved in the youth of Dover and help provide places where they can learn about the benefits of health and fitness.

Anyone interested in becoming a member or looking for more information



**Left to right: Micheal Kohne - morning staff, Samuel Courtney - morning manager, Mark Didonato - morning staff for the last 15+ years and our most loved employee, and Cory Lawson - assistant general manager**

is encouraged to stop by Club Fitness at 650 S. Bay Road in Dover and talk to staff. That is the best way to experience the club, get your questions answered and receive all the information about becoming a member. *You can find them online at [www.clubfitnessdover.com](http://www.clubfitnessdover.com) and on both Instagram and Facebook.*

*Please stop by Club Fitness and congratulate them on their new CDCC membership!*



## Member of the Month

# YOU could be the next CDCC Member of the Month!

Central Delaware Chamber of Commerce's (CDCC) Chamber Connections newspaper readers know to read from their monthly paper from cover to cover to see who the member of the month is for that issue. The Member of the Month feature towards the back of the newspaper is a special spot reserved for the lucky winner whose name is drawn from the silver registration bowl at the CDCC's Sunset Business Mixer held the last Wednesday of every month.

The CDCC is proud to offer this fun and easy way to market its members. Member of the month allows the CDCC to show off an employee of a member company, their role in the company, and their relationship with the CDCC. Member of the month allows for members to connect with this person. You can think of it as your time to shine, because that is truly what it is. It is a free member benefit that provides significant marketing value to you and your company. You never know who may read the Chamber Connections paper besides the Chamber community, and you never know who's going to see you on our website during your featured month.

All you have to do to be eligible for this special honor is attend a Sunset Business Mixer, drop your business card in the silver bowl on the registration table and hang around until the end of the Mixer to hear if your name is called – that's it! If we could quantify the monetary advertising value of this feature,

we know it would be substantial. Simple free marketing for you and your business – unbeatable if you ask us!

We are proud to help show off our members in a simple and engaging way. A CDCC Member of the Month is someone committed to being engaged with their local chamber, which speaks to their dedication and commitment to the community. It is a pleasure to be able to highlight the wonderful people in our membership body working hard in our community and making Central Delaware the place to live, work, and play - that sounds like you!

If you win this unique opportunity, you'll receive a very brief questionnaire to complete that will provide the information for this article. Simply submit that along with your photo and company logo – and we'll do the rest. Send your information to [marketing@cdcc.net](mailto:marketing@cdcc.net) by the 10th of the month.

YOU could be the next Member of the Month by attending a CDCC Sunset Mixer on the last Wednesday of the month. There is no limit on how many times you can win either, so keep sharing your business cards in the silver bowl on the CDCC registration table. We can't wait to see you soon in person and in print, in the widely read Chamber Connections newspaper and on our website!

## Ambassador's Corner

### Chrissy Kyriss



Chrissy Kyriss was born and raised in Chester County Pennsylvania. From 2001-2015, she was a military wife. Chrissy came to Delaware from her previous home in Washington State. After a short time in Delaware, Chrissy and her children (Hannah, Jacob, and Adam) fell in love with the area and decided to settle down and establish roots here. Chrissy has a giving heart and enjoys helping her community with activities such as volunteering at local churches, Girl Scouts and Boy Scouts. Chrissy and her children are happy to call Delaware "home."

Chrissy is in her ninth year of service to Kent County, Delaware, residents at Central Delaware Habitat for Humanity.

She began as an event volunteer, where she quickly embraced the spirit of service and community. Shortly after, she began her employment with CDHFH as a ReStore Associate. A natural leader, Chrissy was quickly promoted to ReStore Director. She is currently the Chief Operating Officer, a position in which she manages a staff of 21 and oversees the daily operations of Central Delaware Habitat for Humanity.

Chrissy has been a CDCC member for a few years and loves the Chamber's efforts to bring the community together. She adores the CDCC staff and loves the Networking benefits. The CDCC is very supportive of Central Delaware Habitat for Humanity, where Chrissy is currently

employed. Chrissy explains that "being a Chamber Ambassador is my way of giving back to the CDCC and thanking them for all their support through the years."



## Congratulations - You're a 10!

"Congratulations – You're a 10!" is designed to recognize, congratulate and highlight recently renewed members who are celebrating membership anniversaries in increments of 10.



Dover Capital City Rotary



**RENEWALS FOR NOVEMBER 2024 - THANK YOU FOR YOUR RENEWAL!**

Company Name	YRS	Company Name	YRS
Chesapeake Utilities Corp.	52	Dover Capital City Rotary	10
Ronald B. Outten	38	Mail Movers	10
McGinnis Commercial Real Estate Co.	35	Nephrology Associates, PA	9
Regulatory Insurance Services, Inc.	31	Hampton Inn - Milford	7
Atlantic Concrete Co., Inc.	29	Delaware Technical Community College - Terry Campus	6
Lessard Builders, Inc.	27	Fireside Partners, Inc.	6
Chick's Saddlery	23	Gracious Heart Nursing Services, LLC	6
Cadia Capitol	22	Academy of Dover Charter School	4
Delaware Breast Cancer Coalition, Inc.	21	Dover Housing Authority	4
Delwood Trailer Sales, Inc.	21	Dover Skating Center	4
Ronald McDonald House of Delaware	21	CertaPro Painters of Delaware	3
Choices for Community Living - Delaware	19	City Wide Facility Solutions Delaware	2
SCORE Delaware	18	MNTN Construction	2
Miller Environmental Group Inc	17	Always Best Care - Delaware	1
A Center for Mental Wellness, Inc.	16	Hodges Accounting & Tax Services	1
Edward Jones Investments - Christopher Smith, CFP®	13	Springhill Suites by Marriott Frederica	1



**NEW MEMBERS**

<b>A to Z Insurance</b>	Paul Sims	65 N DuPont Hwy	Dover	DE	19901	302-730-8250
<b>A-FAB Property Professionals</b>	Melissa Cornwell	607 Savannah Rd	Dover	DE	19901	302-632-1679
<b>American Fire Protection, LLC</b>	Nicole McCarville	4729 Neals School Road	Seaford	DE	19973	302-396-3826
<b>BILL's Blinds &amp; Shades Consulting</b>	Bill Weeks	213 Hunters Run Blvd	Felton	DE	19943	302-382-4147
<b>Delaware Standardbred Owners Association, Inc.</b>	John Hensley	830 Walker Square Suite 11-2	Dover	DE	19904	302-678-3058
<b>OEO Energy Solutions</b>	Tia Einarsen	140 Oakwood Road	Lake Zurich	IL	60035	800-553-2112
<b>Robert W. Rescigno, Ed.D, Collaborative Consulting, LLC</b>	Rob Rescigno	6067 S. Rehoboth Blvd.	Milford	DE	19963	302-897-6167
<b>Tanzey - Jewelry &amp; Accessories Boutique</b>	Lynn McColley	416 NE 10th St	Milford	DE	19963	302-393-1777
<b>Trendy Blendz</b>	Claudine Wega	PO Box 445	Dover	DE	19903	302-217-3075
<b>Wilmington Hope Commission</b>	Darius Brown	5 N Bradford Street	Dover	DE	19901	302-407-3397

# Coffee On Us!

SPONSORED BY

## Tre Sorelle Dolce

The Central Delaware Chamber of Commerce would love to connect you with something delicious! The photograph on our front pageheader changes each month, depicting picturesque and unique locations right here in Central Delaware. These photos are the subject of our monthly "Coffee On Us" contest.

If you recognize the location of the header picture on our front page, be the FIRST PERSON to CALL the CDCC Office (302-734-7513) with the correct answer and you will win a \$10 gift card to:



You'll also see your picture and your company name on our Facebook page - and, of course, you'll win bragging rights for the month!

The winner of the December "Coffee On Us" Contest was Dawne Nickerson who correctly identified the photo of Homestead Gardens. Congratulations, Dawne, and thank you for playing our game!

\*\*\*Please note that the same person is qualified to win the Coffee on Us Contest only twice per calendar year.\*\*\*



# 7-Day E-newspaper NOW AVAILABLE!

\$5 per month // \$55 per year

Subscribe to the Daily State News 7-Day E-newspaper and get unlimited digital access to BayToBayNews.com including regional news from Delmarva.

Subscribe at [BayToBayNews.com/subscribe-today](http://BayToBayNews.com/subscribe-today)

Already a print subscriber? The 7-day E-newspaper is included with your print subscription. Just sign up at [BayToBayNews.com/LogIn.html](http://BayToBayNews.com/LogIn.html), then click on "need an Account."



Have questions about your subscription or need help? Call us at 800-426-4192.



We are **YOUR**  
Chamber  
[cdcc.net](http://cdcc.net)



# Edward Jones



**Christopher Smith**  
Financial Advisor, CFP®, AAMS®  
**302.735.8770**

**WE ARE LOCAL  
AND WE ARE HERE FOR YOU**

Complimentary Portfolio Review Personalized Financial Strategies Strategic Planning



# EDGE

GRANT COMPETITION  
Information Session

WEBINAR

**WEDNESDAY,  
JANUARY 22 | 10:00 A.M.**

Learn how to apply for the EDGE Grant competition and what elements are needed for a successful application. You'll hear from the Division's staff, our partners at the SBDC and a previous EDGE winner with tips.

REGISTER  
at [de.gov/edge](http://de.gov/edge) or





## We are accepting

- New patients
- Offering skin cancer checks
- SRT (painless, non-scarring skin cancer treatment)

## CLINICAL AND COSMETIC DERMATOLOGY

At Connolly Dermatology, we provide expert skincare services tailored to your needs, with a team of skilled providers dedicated to improving and maintaining the health of your skin. From medical dermatology to advanced cosmetic treatments, trust Connolly to deliver personalized, compassionate care for all ages.

# CONNOLLY DERMATOLOGY

Eden Hill Medical Center

200 Banning St., Suite 380 • Dover, DE 19904

302-291-9900

[connollydermatology.com](http://connollydermatology.com)

